

# PLEXO™

With you, whatever the weather



**GLOBAL SPECIALIST** IN ELECTRICAL AND  
DIGITAL BUILDING INFRASTRUCTURES

 **legrand®**



# Contents

- p.4 **Plexo™ style**  
something to suit every taste
- p.6 **Plexo™**  
freedom of installation
- p.8 **Plexo™**  
horizontally or vertically
- p.10 **Plexo™**  
rugged and suitable for any situation
- p.12 **Plexo™**  
more than 100 accessible functions
- p.14 **Plexo™**  
lighting control units
- p.16 **Plexo™ functions**  
power distribution
- p.18 **Plexo™ functions**  
for even more possibilities
- p.20 **Catalogue pages**



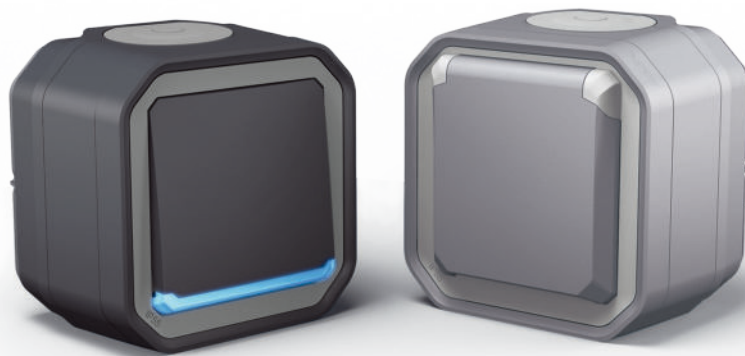
An **iconic** name,

A **contemporary** design

**The go-to range of weatherproof wiring accessories**, Plexo has adopted **current trends** with **contemporary lines**.

A design with character.

A strong offer.





# No limit to where it can be used

The Plexo range of wiring accessories is designed to provide **protection** against splashing water and accumulation of dust.

Install Plexo:

- in **damp** places: garages, professional kitchens etc.
- **outdoors**: shopping centre shopfronts, public or private car parks etc.

Available either **surface-mounted** for renovation or **flush-mounted** for an understated, discreet finish.



# Plexo™ style

something to suit every taste

The range has been expanded to **3 finishes** to fit in with every trend in any location.

You will find a colour **to suit all your projects**, both indoors and outdoors.



## Contemporary



**Anthracite**

## Essential



**Grey**



**Pure**



**White**



# Plexo™

LEGRAND  
PATENT

## freedom of installation

**Plexo has been updated** with a redesigned product architecture. Discover the new plate concept with shallow depth and **space** around the mechanism, making **wiring easier**.

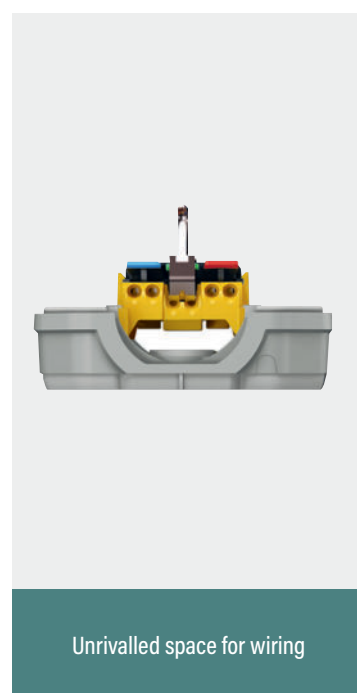
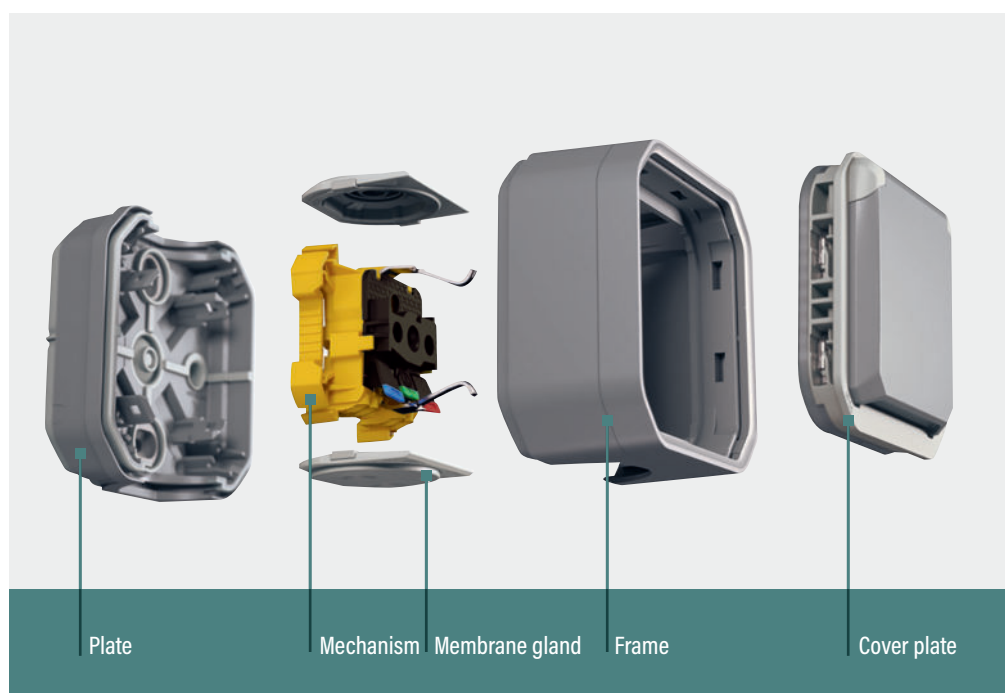


## Guaranteed ease of installation

**EASY**



- Twice as much wiring space.
- Even simpler to install.
- Freedom of movement when wiring or creating tap-offs.





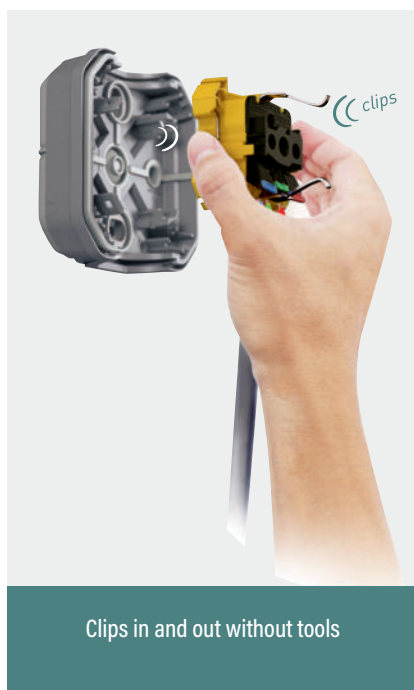


## Toolless

A movable mechanism.

## Wire up products as you please

2 possible wiring modes.



### Mechanism not clipped in place



### Mechanism clipped in place



# Plexo™

LEGRAND  
PATENT

## horizontally or vertically

Plexo **can adapt to any situation** and is **simple to install** in a multigang configuration.

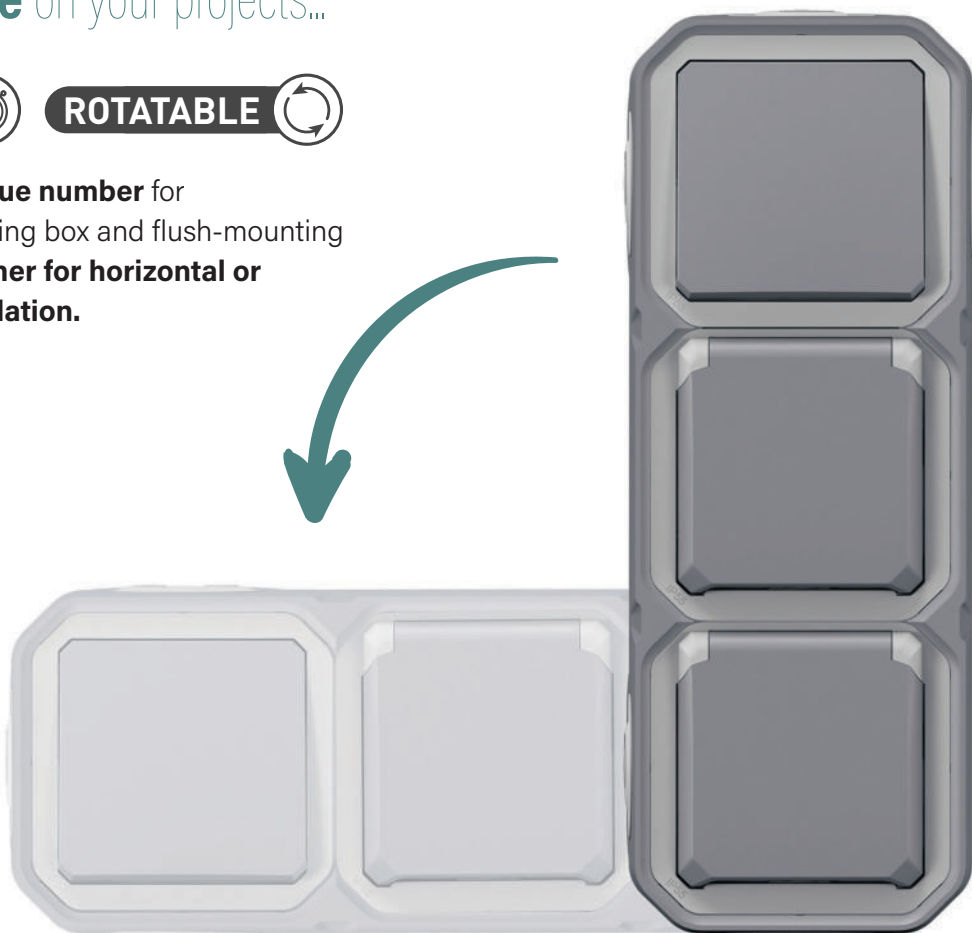


### Save time on your projects...

**QUICK** 

**ROTATABLE** 

**Same catalogue number** for surface-mounting box and flush-mounting support, **whether for horizontal or vertical installation.**





... and benefit from **more flexibility**

No need for tools, just clip and pivot the mechanism and the job's done!



Unclip, pivot  
and clip in again

Reposition the cover plate



# Plexo™

rugged and suitable for  
any situation

The plate and frame give the product extra rigidity on an uneven surface.

**Redesigned seals and weatherproofing membranes** positioned at the main product assembly points.

An IP 55 range for safe use on any installation site and in any environment.



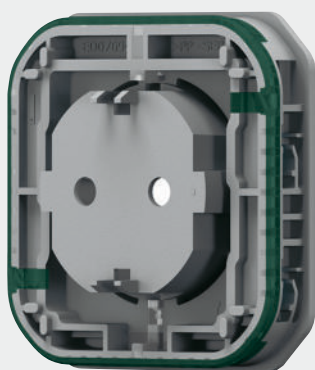
**WEATHERPROOF**



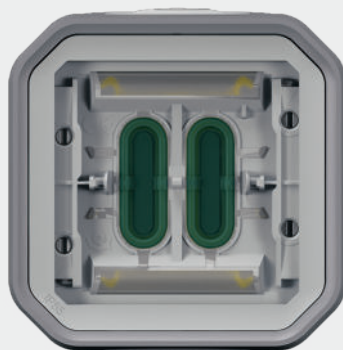
**RUGGED**



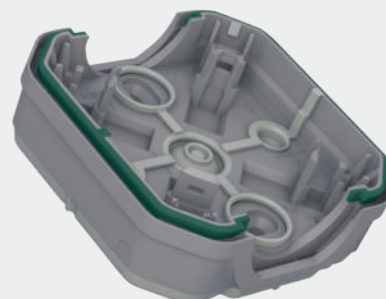
**LEGRAND  
PATENT**



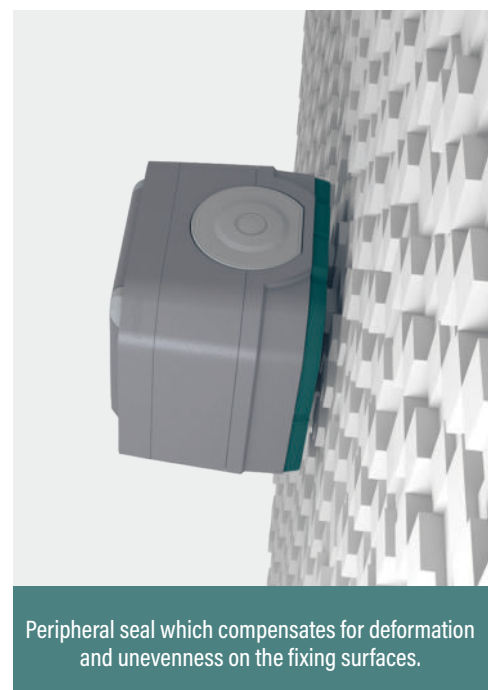
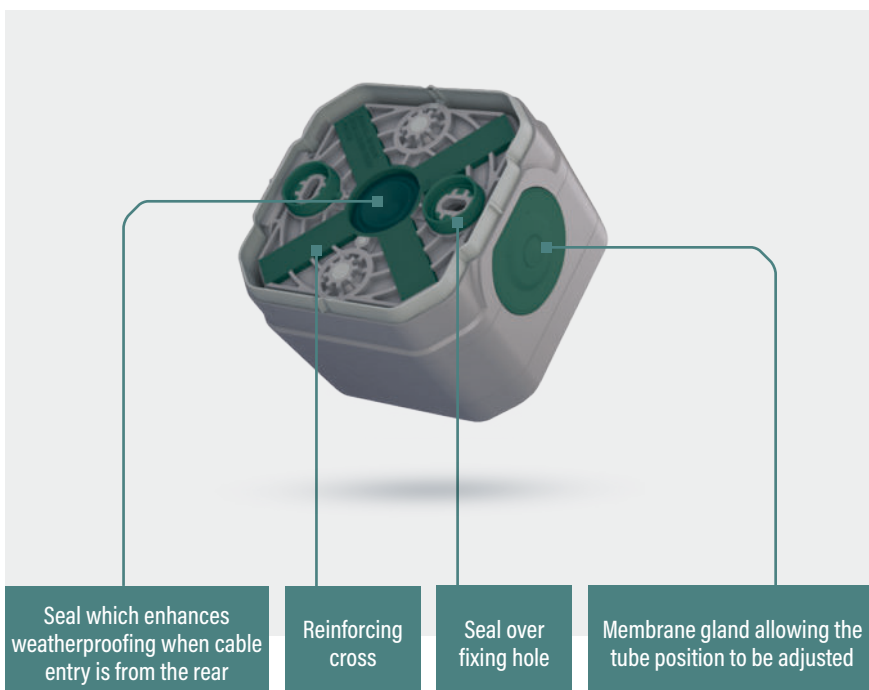
Seal between cover plate and frame



Switch inner membrane remains intact



Seal between plate and frame.  
Enhances weatherproofing once assembled



# Plexo™

more than 100 accessible functions

**With the most extensive offer on the market, Plexo is available in flush-mounting or surface-mounting, complete and modular versions, to suit:**

- **all requirements and all types of use:** single or double switches, with or without indicator, motion sensors, multi-gang sockets, etc.
- **all sites and activity sectors:** commercial, industrial, residential etc.

With the **Arteor adaptor**, you have even greater choice with significantly more functions.







## Keyswitches

Keyswitches allow you to restrict control of the circuit to prevent untimely power cuts on logistics or industrial sites.



Ronis no. 455 keyswitch

# Plexo<sup>TM</sup>

## lighting control units

### Double switch and transformer

The double switch and transformer combine **several functions** in **a single catalogue number**.

A simple ¼ turn changes from one function to another.

These products are ideal for reducing your **stock on sites** and carrying out **maintenance** and repairs with greater **flexibility!**



INNOVATIVE



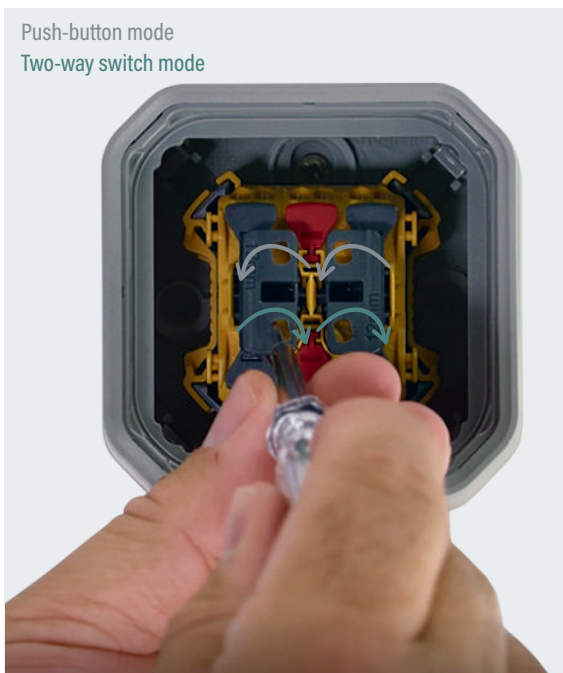
SMART



Double switch: a **3 in 1** product

The double switch contains 3 functions:

Push-button mode  
Two-way switch mode



Mode changed with a 1/4 turn



Double push-button

OR

Double two-way switch

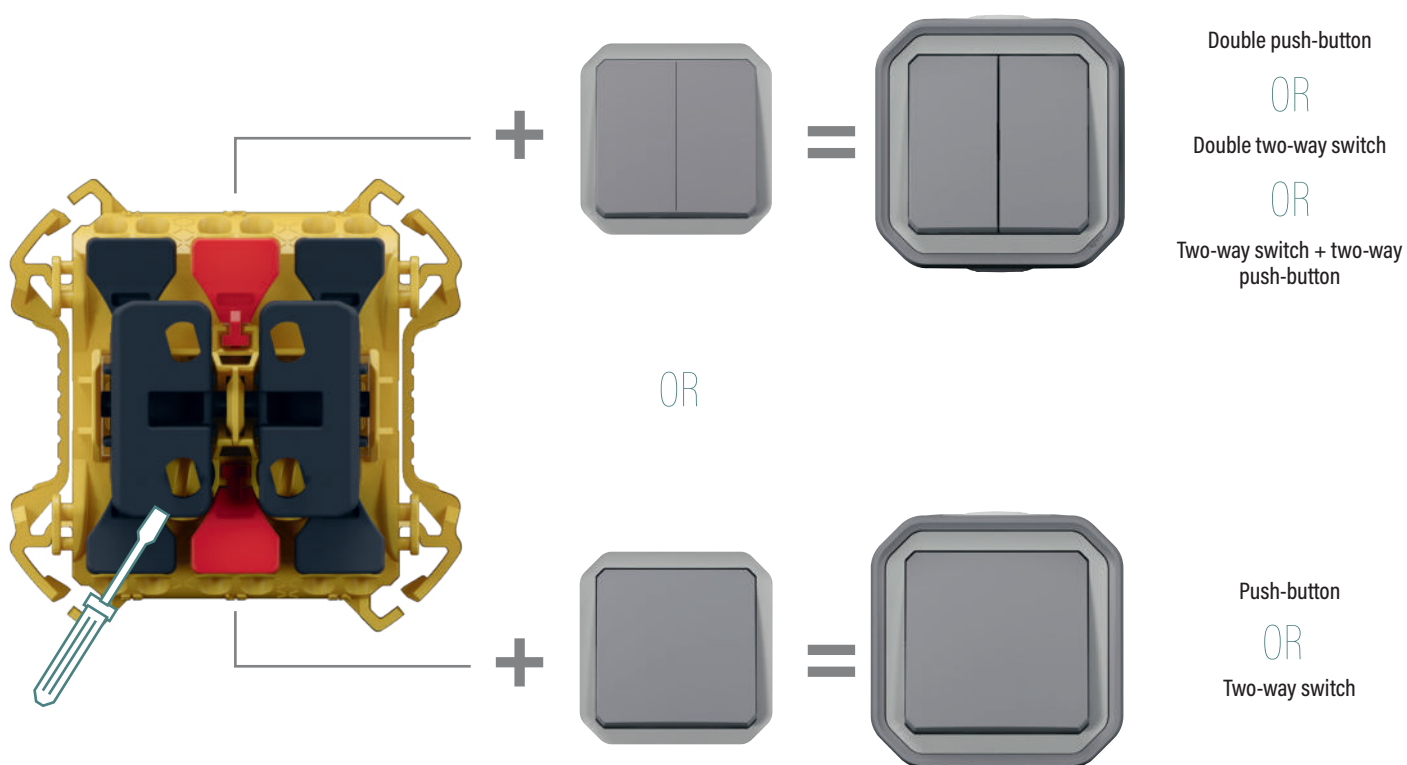
OR

Two-way switch + two-way push-button



## Transformer: a **5** in **1** product

5 lighting controls can be created:





# Plexo<sup>TM</sup> functions:

## Power distribution

**Simple** and **modular**, the Plexo range extends the fields of **possibility** and can adapt to any **location**, **lifestyle** and **type of use**.

### 2P+E sockets

Thanks to its **easy installation**, you can wire up Plexo sockets **without tools** thanks to their **quick connection**.

Available with up to **3 gangs** for either **horizontal** or **vertical** installation, these power sockets allow electrical appliances to be plugged in in **damp places** or **outdoors**, and guarantee **weatherproofing** and **ruggedness**.



### Prewired double sockets

Complete, ready-to-install products



Horizontal double 2P+E

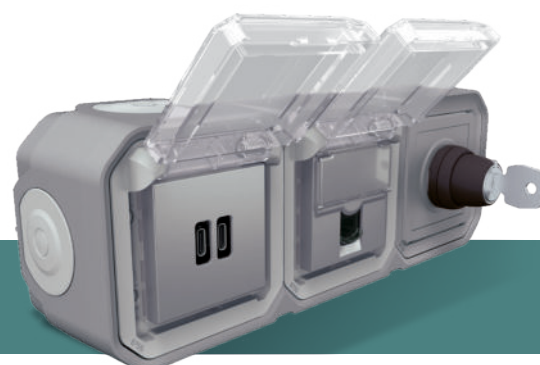


# Plexo™ functions:

For even more possibilities

## Arteor™ adaptor with safety flap

The Mosaic™ adaptor with safety flap can incorporate a Mosaic™ mechanism without a support in a Plexo IP 55 design, making them weatherproof and shock-resistant regardless of which functions are included.



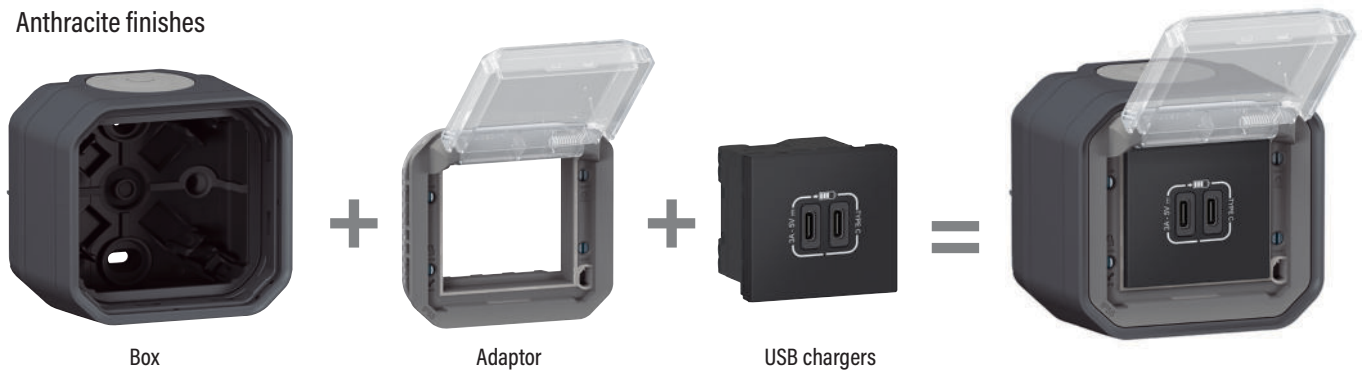
It extends the range of possibilities with, in particular, USB Type-C, RJ 45, TV sockets, etc.



## A harmonious design

Plexo™ and Arteor™ in perfect harmony!

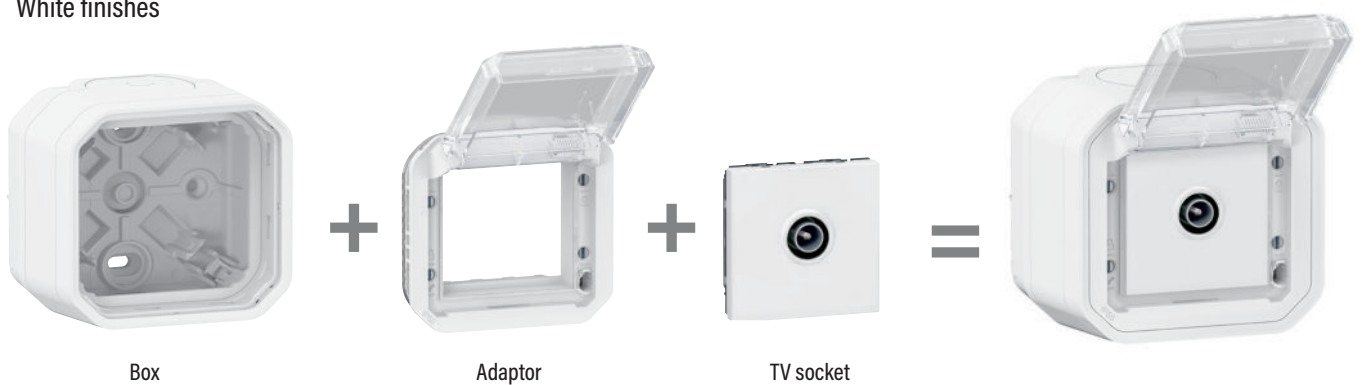
### Anthracite finishes



### Grey finishes



### White finishes





# Plexo™ complete surface mounting IP 55

## switches and push-buttons



0 697 61L



0 697 22L

Mechanisms supplied complete with non-clipped frame

Pack	Cat.Nos	Switches 10 AX - 250 VA
10 10	0 697 11L 0 697 61L	<p>IP 55 - IK 08. Automatic terminals</p> <p><b>Two-way switch</b></p> <p>● Grey ● Anthracite</p> <p><b>Two-way switch - with indicator</b></p> <p>Supplied with 230 VA lamp to be wired with a terminal block</p> <p>● Grey ● Anthracite</p> <p><b>Illuminated two-way switch</b></p> <p>Supplied with 230 VA lamp to be wired</p> <p>● Grey ● Anthracite</p> <p><b>Intermediate switch</b></p> <p>● Grey</p>

Pack	Cat.Nos	2-gang switch/push-button - 10 AX - 250 VA
10 10	0 697 15L 0 697 75L	<p>IP 55 - IK 08. Automatic terminals</p> <p>Supplied as a 2-gang push-button</p> <p>Allows to create 3 functions:</p> <ul style="list-style-type: none"> <li>- 2-gang two-way switch</li> <li>- 2-gang changeover push-button</li> <li>- two-way switch + changeover push-button</li> </ul> <p>● Grey ● Anthracite</p>
10 10	0 697 20L 0 697 90L	<p><b>Push-buttons 10 A</b></p> <p>IP 55 - IK 08. Automatic terminals</p> <p><b>NO contact push-button</b></p> <p>● Grey ● Anthracite</p> <p><b>Illuminated NO contact push-button</b></p> <p>Supplied with 230 V± lamp to be wired</p> <p>● Grey ● Anthracite</p>
10 10	0 697 22L 0 697 82L	<p>● Grey ● Anthracite</p>




Plexo™ complete surface mounting IP 55  
motion sensor



0 697 40

Mechanisms supplied complete with non-clipped frame


Pack	Cat.Nos	Motion sensor
		IP 55 - IK 04 - 3-wire with neutral Automatic terminals Allows control of a lighting device as soon as the movement is detected Maximum load: - 2000 W for incandescent, halogen 230 V and halogen 12 V lamps, - 1000 VA for fluorescent tubes and compact fluorescent lamps Temporization between 12 s and 16 min. Detection angle: 360° Light level threshold : 5 à 1275 lux Detection range from 0 to 12 m with detector installed on wall at a height of 2.50 m. Minimum installation height: 1.70 m With directional head, can be removed without tools Dim. 90 x 91 mm (diameter: 91 mm)
1	0 697 40	
1	0 697 80	
1	0 488 98	

Plexo™ complete surface mounting IP 55  
socket outlets



0 697 33L

IP 55 - IK 08. Mechanisms supplied complete with non-clipped frame

Pack	Cat.Nos	German standard socket outlets - 16 A - 250 VA
		With shutters for child protection Supplied with 1 membrane gland - 2 outputs <b>2P+E socket outlets - screw terminals</b>
10	0 697 33L	
10	0 697 83L	

# Plexo™ complete surface mounting IP 55

## socket outlets (continued)












0 697 31L

IP 55 - IK 08. Mechanisms supplied complete with non-clipped frame

Pack	Cat.Nos	French standard socket outlets - 16 A - 250 VA
10	0 697 31L	<p>With shutters for child protection Supplied with 1 membrane gland - 2 outputs</p> <p><b>2P+E socket outlets - automatic terminals</b></p> <p>● Grey</p> 

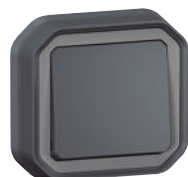


0 697 50L

Pack	Cat.Nos	British standard socket outlets - 13 A - 250 VA
10	0 697 32L	<p><b>Socket outlets - screw terminals</b></p> <p>● 2P+E - Grey</p> 
10	0 697 39L	<p>● 2 x 2P+E - Grey</p> 
10	0 697 50L	<p>● 2P+E + 2-way switch - Grey</p> 
		<p><b>Socket outlets 20 A and 32 A</b></p> <p>Screw terminals</p> <p>● Grey</p>
5	0 916 55	<p><b>20 A</b></p> <p>Compatible with membrane gland Cat.No 0 919 14</p> <p>2P+E - 230 VA</p> 
5	0 916 56	<p>3P+E - 400 VA</p> 
5	0 916 57	<p>3P+N+E - 400 VA</p> 
5	0 558 72	<p><b>32 A</b></p> <p>Compatible with membrane gland Cat.No 0 919 15</p> <p>2P+E - 230 VA</p> 
5	0 558 75	<p>3P+E - 230 VA</p> 
5	0 558 77	<p>3P+N+E - 230 VA</p> 
50	0 919 14	<p><b>Membrane glands with marking of Ø for tubes and cables</b></p> <p>● Grey (RAL 7035)</p> <p>Up to Ø20</p>
50	0 919 15	<p>Up to Ø25</p>

# Plexo™ complete flush-mounting IP 55

switches, push-buttons and socket outlets



0 698 81L



0 698 31L



0 698 59L

IP 55 - IK 08. Mechanisms supplied complete  
Can be installed with claws Cat.Nos 0 697 96L and 0 697 97L (p. 39)

Pack	Cat.Nos	Switches 10 AX - 250 VA
10 10 10	0 698 11L 0 698 81L 0 698 51L	<b>Two-way switch - automatic terminals</b> <ul style="list-style-type: none"> <li>● Grey</li> <li>● Anthracite</li> <li>○ White</li> </ul>
10 10	0 698 15L 0 698 55L	<b>2-gang switch/push-button - 10 AX - 250 VA</b> Automatic terminals Supplied as a 2-gang changeover push-button Allows to create 3 functions: - 2-gang two-way switch - 2-gang changeover push-button - two-way switch + changeover push-button <ul style="list-style-type: none"> <li>● Grey</li> <li>○ White</li> </ul>
10 10 10	0 698 31L 0 698 60L 0 698 70L	<b>French standard socket outlet - 16 A - 250 VA</b> Automatic terminals 2P+E with shutters for child protection <ul style="list-style-type: none"> <li>● Grey</li> <li>● Anthracite</li> <li>○ White</li> </ul>

Pack	Cat.Nos	German standard socket outlets - 16 A - 250 VA
10 10 10	0 698 33L 0 698 59L 0 698 69L	<b>2P+E - screw terminals</b> <ul style="list-style-type: none"> <li>● Grey</li> <li>● Anthracite</li> <li>○ White</li> </ul>
10 10	0 698 34L 0 698 68L	<b>2P+E - with claws</b> <ul style="list-style-type: none"> <li>● Grey</li> <li>○ White</li> </ul>
10 10 10	0 557 03 0 557 06 0 557 08	<b>Socket outlets 20 A - IP 44</b> Screw terminals <ul style="list-style-type: none"> <li>● Grey</li> </ul> 2P+E - 230 VA 3P+E - 400 VA 3P+N+E - 400 VA
10	0 903 59	<b>Surface mounting box</b> For 20 A sockets Cat.Nos 0 557 03/06/08 Dimensions: 79 x 86 x 40 mm



# Plexo™ mechanisms IP 55

## switches



0 695 11L



0 696 25L

Mechanisms supplied with cover plate  
Installation with surface mounting boxes or flush-mounting support frames (p. 39)

Pack	Cat.Nos	Switches 10 AX - 250 V
		IP 55 - IK 08. Automatic terminals
		<b>Two-way switch</b>
10	0 695 11L	● Grey
10	0 698 01L	● Anthracite
10	0 696 11L	○ White
		<b>Two-way switch - with indicator</b>
		Supplied with 230 VA lamp to be wired with a terminal block
5	0 695 12L	● Grey
5	0 698 02L	● Anthracite
5	0 696 12L	○ White
		<b>Illuminated two-way switch</b>
		Supplied with 230 VA lamp to be wired
5	0 695 13L	● Grey
5	0 698 03L	● Anthracite
5	0 696 13L	○ White
		<b>Double pole switch</b>
		Becomes illuminated with lamp Cat.No 0 694 96L (p. 40)
		Indicator version with lamp Cat.No 0 694 98L (p. 40) to be wired with terminal block
10	0 695 30L	● Grey
10	0 698 27L	● Anthracite
10	0 696 27L	○ White

Pack	Cat.Nos	Two-way switch without neutral - with indicator
1	0 695 15L	IP 55 - IK 07 4 AX 60 W mini - 1500 W maxi Supplied with 230 VA lamp ● Grey
		<b>2-gang switches/push-buttons - 10 AX - 250 VA</b>
		IP 55 - IK 08. Automatic terminals Supplied as a 2-gang push-button Allows to create 3 functions: - 2-gang 2-way switch - 2-gang changeover push-button - two-way switch + changeover push-button
		<b>2-gang two-way switch or 2-gang changeover push-button</b>
10	0 695 25L	● Grey
10	0 698 05L	● Anthracite
10	0 696 25L	○ White

## Plexo™ mechanisms IP 55

### push-buttons



0 696 30L



0 695 44L

Mechanisms supplied with cover plate  
Installation with surface mounting boxes or flush-mounting support frames (p. 39)

Pack	Cat.Nos	Push-buttons 10 A
		IP 55 - IK 08 Automatic terminals
		<b>NO contact push-button</b>
10	0 695 40L	● Grey
10	0 698 10L	● Anthracite
10	0 696 30L	○ White
		<b>Illuminated NO contact push-button</b>
		Supplied with 230 VA lamp to be wired
5	0 695 42L	● Grey
5	0 698 13L	● Anthracite
5	0 696 32L	○ White
		<b>Illuminated changeover push-button</b>
		NO + NC contact Supplied with 230 VA lamp to be wired
5	0 695 36L	● Grey
5	0 698 16L	● Anthracite
5	0 696 16L	○ White
		<b>Illuminated changeover push-button with label-holder</b>
		NO + NC contact Supplied with 12 VA lamp to be wired Can be equipped with 230 VA lamp Cat.No 0 694 96L (p. 40)
5	0 695 44L	● Grey
5	0 698 14L	● Anthracite
5	0 696 34L	○ White

## Plexo™ mechanisms IP 55

### keyswitches, time lag switch and light sensitive switch



0 695 34L



0 698 04L  
+ surface mounting box 0 696 01L



0 695 17L

Mechanisms supplied with cover plate  
Installation with surface mounting boxes or flush-mounting support frames (p. 39)

Pack	Cat.Nos	Keyswitches 3 A - 250 V - Ronis n° 455
		Supplied with a set of 2 RONIS keys n° 455 Keys removable in all positions 2 NO contacts
1	0 695 34L	2 positions marked "0 - I" ● Grey
1	0 695 35L	3 positions marked "I - 0 - II" ● Grey
		<b>Illuminated time lag switch 230 VA</b>
		IP 55 - IK 07 Without neutral - 2-wire - screw terminals Lighting or heating control with switch-off timer Possibility to install several time lag switches on the same circuit Supplied with lamp Temporization: 25 s to 15 min. Maximum loads: - 1000 W incandescent - 400 W halogen 130 V - 400 VA ELV halogen lamps - 400 VA fluorescent lamps - 1840 W resistive (heating)
1	0 695 04L	● Grey
1	0 698 04L	● Anthracite
1	0 696 04L	○ White
		<b>Light sensitive switch</b>
		IP 55 - IK 08 Screw terminals Can be used to switch a lighting circuit "ON" and "OFF" based on light conditions (nightfall, daybreak) Supplied in one piece, including photoelectric cell Maximum loads: - 1400 W incandescent - 500 VA fluorescent tubes - 200 VA LEDs Adjustable light level threshold: 2 to 1500 lux Can be combined with all finishes of surface mounting boxes and support frames (p. 39)
1	0 695 17L	

# Plexo™ mechanisms IP 55

## motion sensors



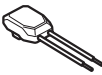


0 695 20L



0 401 49

Mechanisms supplied with cover plate  
Installation with surface mounting boxes or flush-mounting support frames (p. 39)

Pack	Cat.Nos	Motion sensors
1	0 695 20L	<p>Sensors without override Compatible with any type of lamp IR detection, detection field 170° Detection range 8 m Time delay setting from 5 s to 30 min Light level threshold setting from 5 to 1275 lux 4 levels of sensitivity setting Standby consumption : 0.01 W</p> <p><b>Motion sensor, 2 wires, without neutral</b></p>  <p>Accepted power by lamp type : - LEDs: 2 to 100 W - Compact fluorescent : 2 to 100 W - Halogens, incandescent: 2 to 150 W - LEDs, CFLs, Halogen, fluo tube with ferromagnetic or electronic transformer: 2 to 150 VA If several sensors are installed on the same circuit, the minimum load changes: refer to the technical sheet Possibility to install up to 3 sensors in parallel Additional remote manual control possible with push button, 10 max. Can be associated with a time-lag switch (p. 34) Accepted power by lamp type will be power of the time-lag switch used.</p>
1	0 695 22L	<p><b>Motion sensor, 3 wires, with neutral</b></p>  <p>Accepted power by lamp type : - LEDs: 0 to 500 W - Compact fluorescent: 0 to 500 W - Halogens, incandescent: 0 to 2000 W - LEDs, CFLs, Halogen, fluo tube with ferromagnetic or electronic transformer: 0 to 1000 VA Possibility to install up to 10 sensors in parallel Additional remote manual control possible with push button, 10 max. Master/Slave function available (10 slaves max. for 1 master)</p>
1	0 401 49	<p><b>Active power compensator</b></p>  <p>Ensures compatibility of 2-wire electronic lighting controls without neutral with all available types of loads (LEDs, compact fluorescent lamps, ELV halogen lamps with electronic or ferromagnetic ballast, 230 V halogen lamps, fluorescent tubes, incandescent lamps) Standby consumption: 1.2 W</p>



# Plexo™ mechanisms IP 55

German standard, British standard and French standard socket outlets











0 695 70L



0 696 21L

Mechanisms supplied with cover plate  
Installation with surface mounting boxes or flush-mounting support frames (p. 39)

Pack	Cat.Nos	German standard socket outlets 16 A - 250 VA
		IP 55 - IK 08
		<b>2P+E - automatic terminals</b>
10	0 695 70L	 ● Grey
10	0 698 71L	● Anthracite
10	0 696 40L	○ White
		<b>2P+E - screw terminals</b>
10	0 695 71L	 ● Grey
10	0 698 39L	● Anthracite
10	0 696 39L	○ White
		<b>Prewired German standard socket outlets 16 A - 250 VA</b>
		Automatic terminals One-piece mechanism, only one connection required
5	0 695 76L	<b>2 x 2P+E - horizontal mounting</b>  ● Grey
5	0 695 77L	<b>2 x 2P+E - vertical mounting</b>  ● Grey
		<b>British standard socket outlet 13 A - 250 VA</b>
10	0 695 85L	IP 55 - IK 08  2P+E - screw terminals ● Grey

Pack	Cat.Nos	French standard socket outlets 16 A - 250 VA
		IP 55 - IK 08 Equipped with a flap
		<b>2P+E with shutters - automatic terminals</b>
10	0 695 51L	 ● Grey
10	0 698 91L	● Anthracite
10	0 696 21L	○ White
		<b>2P+E tamperproof - screw terminals</b>
5	0 695 53L	 ● Grey
		<b>Tamperproof insert for Cat.No 0 695 53L</b>
10	0 502 99	 Tamperproof insert for socket Fits directly into the plug

## Plexo™ mechanisms IP 55

### Data and TV sockets, adaptors and emergency stop functions



0 695 59L



0 695 80L



0 695 47L

Mechanisms supplied with cover plate

Installation with surface mounting boxes or flush-mounting support frames (p. 39)

Pack	Cat.Nos	<b>RJ 45 data sockets</b>
5	0 695 59L	IP 55 (with closed flap) - IK 08 ● Grey Cat. 6 <sup>A</sup> - STP Cat. 6 <sup>A</sup> - FTP Cat. 6 - UTP
5	0 695 69L	
5	0 695 61L	
		<b>TV sockets</b>
		IP 55 - IK 08 For DAB+, DVBT, Cablecast and satellite installation. UHD TV compatible Class A shielded star socket LTE Ready (4G protected) Recommended coaxial cable: 17 VATC Star cabling (1 socket = 1 antenna, splitter or multiswitch) Visual check of the connection Meets EN 50083-4 and EN 50083-2 European directive
1	0 695 58L	<b>TV-R-SAT</b> ● Grey
		<b>Adaptors for 2-module Arteor mechanisms</b>
		Can be equipped with any 2-module Arteor functions (except for specific depths) in order to obtain an IP 55 wiring device
10	0 695 80L	<b>Adaptor with transparent flap</b> IP 55 - IK 08 ● Grey ● Anthracite ○ White
10	0 698 80L	
10	0 696 95L	
10	0 695 79L	<b>Adaptor with lockable transparent flap</b> IP 55 - IK 08 Lockable with special tool Cat.No 0 919 45 ● Grey
10	0 695 82L	<b>Adaptor without flap (IP 20)</b> ● Grey

Pack	Cat.Nos	<b>Adaptors for 2-module Arteor mechanisms (continued)</b>
10	0 695 87L	<b>Adaptor with flexible membrane</b> Allows to install 2-module Arteor functions (except for specific depths) and to control them by pressing on the flexible membrane while maintaining the IP 55 sealing ● Grey
		<b>Accessories</b>
1	0 919 45	<b>Security tool</b> Locking tool for adaptors Cat.Nos 0 695 79L and 0 698 45L To be used to remove/tighten vandal-proof screws
		<b>Emergency stop functions 3 A - 250 VA</b>
1	0 695 47L	IP 55 - IK 07 Supplied with "emergency stop" label in 4 languages Yellow cover plate, red button Emergency stop button 1 NC contact Single pole
1	0 695 48L	Emergency stop with key for reset NO + NC contact Supplied with a set of 2 RONIS keys n°455 Keys removable in 0 position
1	0 695 49L	Emergency stop - stay put 1/4 release NO + NC contact

## Plexo™ mechanisms IP 55

### surface mounting boxes and flush-mounting support frames



To be equipped with modular Plexo mechanisms (p. 33 to 38)

Pack	Cat.Nos	
		<b>1-gang surface mounting boxes with membrane glands</b>
		Equipped with removable membrane glands 2 membrane glands 1 entry
10	0 696 51L	● Grey
10	0 696 01L	● Anthracite
10	0 696 89L	○ White
		<b>2-gang and 3-gang surface mounting boxes with membrane glands</b>
		No separation between compartments in order to facilitate the cabling operations and to allow the installation of prewired socket outlets
		<b>2-gang - horizontal or vertical mounting</b>
		3 membrane glands 1 entry 1 membrane gland 2 entries
5	0 696 72L	● Grey
5	0 696 02L	● Anthracite
5	0 696 90L	○ White
		<b>3-gang - horizontal or vertical mounting</b>
		4 membrane glands 1 entry 1 membrane gland 2 entries
5	0 696 80L	● Grey
5	0 696 03L	● Anthracite
5	0 696 88L	○ White
		<b>Surface mounting boxes for cable glands</b>
		<b>1-gang, 1 entry - ISO 20</b>
10	0 696 56L	● Grey
		<b>2-gang, 2 entries - ISO 20</b>
		For horizontal or vertical mounting The 2-entry cable gland can be positioned at different locations
5	0 696 68L	● Grey

Pack	Cat.Nos	
		<b>Flush-mounting support frames</b>
		Used for flush-mounting version for German and French standard boxes only
		<b>1-gang</b>
		Can be equipped with claws Cat.Nos 0 697 96L/97L
10	0 696 81L	● Grey
10	0 696 06L	● Anthracite
10	0 696 92L	○ White
		<b>2-gang - horizontal or vertical mounting</b>
		71 mm fixing centers
5	0 696 83L	● Grey
5	0 696 07L	● Anthracite
5	0 696 94L	○ White
		<b>Claws</b>
		Sets of 2 claws + 1 spacer
50	0 697 96L	Standard claws
50	0 697 97L	Long claws

# Plexo™ mechanisms IP 55

## membrane glands and accessories



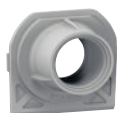
0 695 96L



0 695 99L



0 696 65L



0 696 60L



0 696 50L



0 694 96L



0 694 98L



0 694 95L



0 694 92L



0 695 97L

Pack	Cat.Nos	Membrane glands
10	0 695 96L	<b>1 entry - Ø up to 25 mm</b> Grey
10	0 695 99L	<b>2 entries - Ø up to 12.5 mm</b> Grey
10	0 696 65L	<b>For pairing</b> Allows to combine surface mounting boxes with one another for an IP 44 installation Grey

Pack	Cat.Nos	Cable glands
10	0 696 60L	<b>1 entry ISO 20</b> Grey Anthracite White
10	0 696 63L	
10	0 696 62L	
10	0 696 70L	<b>2 entries ISO 20</b> Grey Anthracite White
10	0 696 73L	
10	0 696 71L	

Pack	Cat.Nos	Lamps to be wired
5	0 694 96L	230 VA- 0.2 mA - blue - locator 230 VA- 2 mA - blue - indicator 12 to 48 VA- 2.6 mA (48 VA) - blue
5	0 694 98L	
5	0 694 95L	
Pack	Cat.Nos	Fixing accessories
5	0 694 92L	<b>1-gang stainless steel height spacer for sandwich panel</b> Supplied with screw for fixing the product on the height spacer and double insulated caps (Class II) for the wiring accessory
10	0 695 97L	<b>For thin walls</b> Does not require a flush-mounting box
10	0 695 98L	<b>Set of 4 caps</b> For sealing fixing holes when installing a surface mounting box on a metal support Grey









**South Africa**

21 Spartan Crescent  
Eastgate Ext 3, Sandton  
2054

☎ : + 27 (0) 11 444 7971

email: [legrand.south-africa@legrand.co.za](mailto:legrand.south-africa@legrand.co.za)

[www.legrand.co.za](http://www.legrand.co.za)