

# NEWSLTR

IMPROVING LIVES BY TRANSFORMING THE SPACES WHERE PEOPLE LIVE, WORK AND MEET



## SERVING OUR CUSTOMERS

#legrandimprovinglives

Elevating Expertise

05

Committing to a Greener Future

13

Legrand Data Center Busway

14



# FORWARD

Dear Valued Customers,

As we close out another quarter, I'm proud to share some of our key achievements and look ahead to what's next. Our commitment to providing innovative solutions and strengthening our partnerships remains at the heart of everything we do.

Our focus on customer training was a huge success this quarter. In July, we held two weeks of intensive sessions in Johannesburg, Durban, and Cape Town. We had a fantastic turnout of 67 attendees who participated in programs tailored for both installers (copper and fiber) and system integrators. We were fortunate to have our global expert, Philippe David, lead these sessions and share his invaluable insights. We also expanded our training to include a workshop in Zimbabwe, where 28 attendees learned about our Critical Power solutions, hosted by our partners at EcoLighting.

Our Employee Resource Groups continue to make a meaningful impact. Our women's empowerment group, Ellegrand, teed off in support of the Cradle of Hope Charity Golf Day, a cause we've long supported in their vital work assisting women and children in need. Ellegrand also continued its support during Women's Month by donating essential sanitary items.

Our commitment to a diverse and inclusive culture will be further highlighted in October, as our LGBTQ+ group, Legrand Rainbow, celebrates South African Pride Month with a Pride Day at our office. The event will include the handover of donations to The Fruit Basket, a transgender- and migrant-led organization that assists the LGBTQ+ community in South Africa.

This quarter also saw the launch of several cutting-edge new products designed to meet the evolving needs of the market. Our new Legrand Data Center Track Busway is a globally recognized solution for high-density, AI-intensive environments. We also released our updated Plexo Wiring Devices, which combine robust weatherproof performance with a modern design. We are also excited to announce some forthcoming product launches that will continue to simplify and enhance your daily life: the Arteor 45W USB and the Smarter AC with Netatmo. We look forward to sharing more details with you soon.

Thank you for your continued trust and partnership. We look forward to a strong final quarter and to continuing to serve you with excellence.

Sincerely,

Denis Marangé  
General Manager - Legrand South Africa





**Elevating Expertise**

Over two intensive weeks in July this year, a remarkable 67 attendees participated in highly informative LCS3 & GRMS training held across SA.

**Supporting a Community in Need**

Elle Legrand South Africa recently teed off in support of a cause close to their hearts: the Cradle of Hope Charity Golf Day.

**Bringing Critical Power Expertise to Zim**

Legrand South Africa recently held a comprehensive Critical Power training workshop in Zimbabwe, hosted by EcoLighting.

**Celebrating Women and Hope**

The local chapter of Ellegrand, embraced the spirit of Women's Month by extending a helping hand to a remarkable organization, The Cradle of Hope.

**05**   **Committing to a Greener Future**   **13**  
In line with Legrand's CSR initiatives, we have introduced new, recyclable packaging for our Ysalis switches and sockets prepacks.

**07**   **Legrand Data Center Busway**   **14**  
Legrand Data Center Track Busway technology addresses the operational pressures facing today's high-density, AI-intensive computing environments.

**08**   **Plexo™ Wiring Devices**   **16**  
The new Plexo incorporates re-designed architecture & expanded functionality to meet the demands of the most sophisticated technical & visual environments.

**10**   **P17 Tempra Pro**   **18**  
Legrand's P17 Tempra Pro range of industrial plugs and sockets has been specially designed for safe and reliable use in demanding environments,

The Legrand NEWSLTR publication team would like to thank all the participants:

DIRECTOR OF PUBLICATION: Melanie Vosloo  
EDITORIAL: Shaun Dobbs , Lindy Morton  
LAYOUT: Shaun Dobbs  
PHOTOS: Legrand, Adobe Stock  
All rights reserved © Legrand September 2025



# Ensuring Water Security

## A new water tank for Legrand South Africa



**We're excited to announce the installation of a water tank at Legrand SA, a significant step forward in ensuring reliable water access for all employees and bolstering our operational resilience. This initiative reflects our commitment to employee well-being and business continuity in the face of ongoing water challenges in South Africa.**

South Africa's water infrastructure faces considerable pressure. Aging infrastructure, rapid population growth in provinces like Gauteng, water source pollution, and recurrent droughts have all contributed to increased water supply disruptions. Becoming more water-wise and having backup solutions is no longer just an option; it's essential.

Our new water tank connects directly to the municipal feed, acting as a reservoir to be used during water outages. This means consistent access to water for critical needs like drinking, washing hands, washing dishes, and flushing toilets, directly benefiting employee wellness and ensuring the continuity of our operations.

The tank is UV-protected and features an inner black membrane to inhibit algae growth. Additionally, a filter system ensures the stored water remains fresh and drinkable.

This investment underscores our proactive approach to managing resources and creating a more secure and comfortable environment for everyone at Legrand SA.





# Elevating Expertise

## Successful customer training across SA

**We are thrilled to share the success of our comprehensive training initiative, designed to empower our valued customers with in-depth knowledge and practical skills across our key solutions. Over two intensive weeks in July this year, a remarkable 67 attendees participated in highly informative sessions held in Johannesburg, Durban, and Cape Town.**

These training programs were specifically tailored for Installers (Copper and Fiber) and, subsequently, for System Integrators focusing on our cutting-edge Guest Room Management System (GRMS). We were honored to have Mr. Philippe David, our distinguished Data and Infrastructure Expert Trainer, lead these sessions, sharing his extensive global expertise.

### Enhancing Our Customer's Capabilities with LCS3 Copper & Fiber

For our installer partners, the training provided crucial insights into maximizing the performance and reliability of Legrand's LCS3 Copper and LCS3 Fiber solutions.

### Mastering Intelligent Spaces with our Guest Room Management System (GRMS)

Following the installer sessions, our System Integrator partners participated in dedicated training on our advanced Guest Room Management System (GRMS). This program provided them with the tools and knowledge to unlock new opportunities in the hospitality sector. This GRMS training empowers our integrators to design and implement smart, efficient, and user-friendly hotel environments, positioning them as leaders in hospitality technology.

### Investing in Customer Success

This successful training tour underscores Legrand's unwavering commitment to supporting our customer network. By providing access to world-class expertise and hands-on training, we aim to enhance our customer's technical capabilities, improve project efficiency, and

ultimately, help them deliver even greater value to their clients.

We extend our sincere thanks to Philippe David for his exceptional training delivery and to all our customer attendees for their enthusiastic participation. We are confident that the knowledge gained will translate directly into successful projects and continued growth for their businesses.





# A Long Overdue Makeover!

## New look for the JHB office billboard

If you've been to the Johannesburg premises lately, you'll have noticed that our street-facing billboard on top of our warehouse has gotten a much-needed facelift. After an incredible 14 years, our old artwork has been replaced with a fresh, vibrant new design.

This new look represents our commitment to innovation and progress in the South African market. A big thank you to everyone involved in making this happen!







# Supporting A Community In Need

## Elle Legrand tees off for Cradle of Hope

**Elle Legrand South Africa, the local chapter of our women empowerment Employee Resource Group, recently teed off in support of a cause close to their hearts: the Cradle of Hope Charity Golf Day. This event marked their continued commitment to an organization that does vital work in assisting women and children in desperate need.**

The day saw their four-ball team take to the greens, proudly represented by local chapter lead, Melanie Vosloo, and Jayson Gough. They were joined by two valued guests from our Johannesburg Distributor, Lite-Glo: Darren Minnaar and Ross Fenner. It was a fantastic opportunity for our team to not only enjoy a day of golf but also to network and strengthen relationships with our partners, all while contributing to a crucial community initiative.

The golfing action was followed by an evening of camaraderie and celebration. Guests enjoyed a delightful dinner, a prize-giving ceremony, and a lively charity auction. The highlight of the evening was a special appearance by legendary South African boxer, Brian Mitchell, who brought his trademark humour and charisma to the stage, entertaining the crowd with his witty banter.

The total funds raised from the day were an astonishing R97 000 which will go directly to Cradle of Hope's various projects. These projects provide a vital lifeline to vulnerable individuals in our community. Elle Legrand is incredibly proud to have been a part of this successful event and are excited to see the impact these contributions will have.

"This event is a testament to the power of community and corporate social responsibility. We are grateful to the Cradle of Hope for the incredible work they do and to everyone who participated, helping to make a tangible difference in the lives of many. We look forward to our continued partnership and future opportunities to support this wonderful organization" said Melanie Vosloo.







# Legrand SA & EcoLighting

## Bringing Critical Power Expertise to Zim

Legrand South Africa, in a testament to its commitment to strengthening partnerships across the region, recently held a comprehensive training workshop in Zimbabwe. Hosted by EcoLighting, the event focused on Legrand's innovative Critical Power solutions and drew an enthusiastic crowd of 28 attendees.

The training was led by our very own Grant Colling, Legrand South Africa's Energy Solutions Manager. With his deep expertise, Grant provided a detailed introduction to Legrand's robust offer for critical power infrastructure. The session covered a wide array of essential products, including:

**Uninterruptible Power Supplies (UPS):** Ensuring continuous power for vital operations.

**Busbar and Distribution Boards:** Efficient and reliable power distribution systems.

**Data Cabinets, PDUs, and IT Hardware:** The backbone for secure and organized data centers.

**Cable Trays and Easy Path Fire Seals:** Foundational elements for safe and efficient cable management.

The workshop was a resounding success, with participants providing overwhelmingly positive feedback. The attendees expressed keen interest in moving forward with Legrand's solutions for their projects. This strong reception highlights the growing demand for reliable and high-quality power solutions in the Zimbabwean market.

This event is a fantastic example of how collaboration between Legrand South Africa, and our partners like EcoLighting, can effectively bring our advanced solutions to new markets and empower our customers with the knowledge they need to succeed.











# Celebrating Women and Hope

## A Story of Empowerment and Compassion



dog. Cody's story is a testament to the power of compassion and second chances. Rescued from a homeless person's backpack, he was found dehydrated and starving, on the verge of death. But thanks to the kindness of The Cradle of Hope, Cody was given a new lease on life. Today, he is a healthy, happy, and very much loved member of the community, providing comfort and joy to everyone he meets.

**August is a month of profound significance in South Africa, as the nation comes together to celebrate Women's Month. It's a time to honour the strength, resilience, and contributions of women, while also acknowledging the ongoing challenges they face. This year, the local chapter of our women's empowerment Employee Resource Group (ERG), Ellegrand, embraced the spirit of this occasion by extending a helping hand to a remarkable organization, The Cradle of Hope.**

The Cradle of Hope is a beacon of hope for countless women and children in desperate need. This independent social upliftment and community development organization provides a safe haven and a lifeline for those who have nowhere else to turn. In alignment with their mission, Ellegrand continued its long-standing support for The Cradle of Hope by making a meaningful donation of essential female sanitary items. This donation is more than just a collection of products; it is a gesture of dignity, respect, and solidarity. It's a reminder that every woman deserves to feel empowered and cared for, regardless of her circumstances.

Our visit to The Cradle of Hope was, as always, an emotional and humbling experience. We were met with warmth and gratitude, and we had the privilege of witnessing the incredible work being done there. Amidst the serious work of social upliftment, we also had the pleasure of meeting a very special resident: Cody, the emotional support

Cody's journey mirrors the mission of The Cradle of Hope: to rescue, restore, and empower. His transformation from a neglected, dying animal to a thriving, loving companion is a beautiful metaphor for the work they do with women and children. It reminds us that with a little help and a lot of love, anyone can overcome their past and find a brighter future.



As we reflect on Women's Month, let's not forget the incredible organizations like The Cradle of Hope that are working tirelessly to make a difference. Let's also remember that empowerment comes in many forms, whether it's through a donation of essential items, a kind word, or a loving home for a rescued dog. By working together, we can create a world where every woman, and every living being, has the opportunity to thrive.





**Your Exclusive  
Johannesburg  
Showroom  
Experience Awaits.**

Book Your Appointment Today:  
[www.legrand.co.za](http://www.legrand.co.za)







# Happy Birthday!

## Celebrating our Colleagues Special Days



Andreas - 8th July



Zandile - 10th July



Aamira - 16th July



Charlotte - 7th August



Tabiso - 27th August



Sheldonne - 1st September





# Committing to a Greener Future

## New Ysalis packaging

**At Legrand, we are committed to building a more sustainable future and contributing to a circular economy. In line with our corporate social responsibility (CSR) initiatives, we have introduced new, recyclable packaging for our Ysalis switches and sockets prepacks.**

This is a significant step in our commitment to reducing environmental impact and promoting responsible consumption. Our new packaging is made with materials that are easily recyclable, carrying the recycling codes **PAP 21** and **PET 1**.

### What do these codes mean?

**PAP 21** identifies cardboard materials, which can be recycled into new cardboard products.

**PET 1** identifies a type of plastic widely used for packaging, which can be recycled into new containers, textiles, or other products.

By choosing products with these recycling codes, our customers are also playing a crucial role in creating a more sustainable world. Together, we can make a positive impact on the environment and move closer to a truly circular economy.

Thank you for being a part of our journey towards a greener future.



Jayson - 1st August



Shikaar - 6th September





# Legrand Data Center Busway

## Sustainable, smart track busway for scalable data centre power delivery



**The latest generation Legrand Data Center Track Busway technology addresses the operational pressures facing today's high-density, AI-intensive computing environments and is being well received by data centre facilities around the world.**

The Legrand Track Busway system, engineered for reliability, safety and long-term efficiency, introduces modular, monitored power distribution infrastructure that supports scalable, fault-resilient data centre operations. The advanced track busway system supports current ratings from 160 A to 800 A and integrates key safety and monitoring technologies, while simplifying installation and maintenance.

Legrand's latest solution offers

data centre operators who face growing energy demands of AI-generated content and high-throughput networking, a streamlined, intelligent approach to delivering uninterrupted power within compact, dynamic rack environments.

Notable features of the Legrand Track Busway compared to conventional busway systems, include the combination of premium safety features, rapid tool-free installation, integrated intelligent monitoring and cost-efficiency.

A standout feature is the fully tool-free Tap-Off Box (TOB) installation method, which uses a patented auto-hook mechanism and follows a "mechanical first, electrical second" principle. This reduces risk during live expansion and

ensures consistent, operator-safe connectivity. The TOB system requires no rotational alignment - users simply insert vertically and engage the safety latch, completing installation in seconds.

Straight sections of the system feature a lightweight, flat form structure with IP40-rated protection, enabling efficient use of ceiling space above racks, while maintaining secure conductor isolation. A "finger-safe" conductor gap of 7 mm and integrated spring shims further enhance safety and mechanical reliability. With  $\geq 99.95\%$  copper purity and  $\geq 97.6\%$  IACS conductivity, the system maintains strong thermal and electrical performance over an extended service period.

For sustainability-conscious





operators, Legrand's new design has advantages over conventional systems. Important benefits include 30% recycled copper and 30% recycled aluminium content in key components. By optimising conductor geometry and housing design, the system also reduces material usage and installation overheads, contributing to long-term energy and cost savings compared with other systems.

Integrated intelligence features include four-point thermal monitoring at critical contact points (end feeds, joints and TOBs), with hot-swappable metering modules on both end

ambient temperatures up to 60°C and the system conforms to IEC insulation clearance and creepage standards. Installation is supported by a modular hanging and support kit, allowing for free positioning of brackets and flexible deployment, even in space-constrained ceiling voids. Standard clearance requirements of 600 mm (horizontal) and 700 mm (vertical) ensure compatibility with common data centre layouts.

The Legrand Data Center Track Busway system is available in both monitored and non-monitored configurations

The integration of standard advanced functionality into this system - including hot-swappable meters, multi-point temperature sensing and a compact, installation-friendly profile - eliminates the need for costly add-on features or complex customisation. This results in a lower total cost of ownership, while delivering high performance, reliability and low maintenance requirements.

Legrand specialists confirm that the exponential growth in AI and edge computing calls for power systems that are not only robust, but adaptive and intelligent.



feeds and tap-off units. These modules provide continuous tracking of voltage, current, power factor and joint temperature, ensuring real-time visibility into load and system performance. Communication options include Modbus-RTU and SNMP (v1/v2c/v3), allowing seamless integration into DCIM and facility management platforms.

Thermal derating data is included for operation in

and includes MCCB-equipped end feeds for simplified field maintenance and enhanced circuit isolation. Tap-Off Boxes are offered in multiple output formats (up to 63 A), with options for angled front or bottom drop-cord connections. All units have consistent dimensions for modular integration and hot-swap metering enables live maintenance without service disruption.

The new Legrand Track Busway system combines mechanical innovation with advanced monitoring and a smaller environmental footprint, providing data centres with the safety, scalability and efficiency needed for demanding infrastructure.





# Plexo™ Wiring Devices

With you, whatever the weather



**Legrand's recently upgraded Plexo switches, sockets and accessories are the perfect solution to electrical contractors, interior designers and homeowners looking for a modern, reliable and aesthetically pleasing wiring system.**

The new Plexo system incorporates a re-designed architecture and expanded functionality to meet the demands of the most sophisticated technical and visual environments, by combining robust weatherproof performance, with contemporary, adaptable styling. Legrand has expanded the range to include over 100 functions in interior and exterior applications in residential, commercial and industrial installations.

The robust construction makes this system perfect for exposed areas, like façades, patios, industrial zones, parking structures and building exteriors where durability is essential. These wiring devices are also suitable for use in an outdoor entertainment area, a hotel kitchen, indoor pool area or a car wash business.

The updated Plexo range retains IP55 ingress protection and IK08 impact resistance, while introducing substantial improvements in internal layout, component flexibility and wiring accessibility.

Central to the new system is a revised plate design that offers twice the wiring space of previous versions. The shallow depth configuration improves clearance around

the mechanism, allowing for streamlined cable management and reduced installation time. The system features a convenient toolless design that enables pre-wiring before the mechanism is clipped into position. This eliminates the need for specialised tools and reduces labour complexity on site.

Legrand's updated Plexo range includes rotatable mechanisms that support both vertical and horizontal installation, using the same catalogue number. This innovation allows a single SKU to fulfil multiple installation requirements, reducing inventory holdings and offering greater flexibility during project specification and layout planning. Mechanisms can be repositioned easily by unclip, rotate and re-clip, with no



additional parts or tools required.

Weatherproofing integrity is maintained through the redesigned sealing systems. These include peripheral seals that compensate for irregular mounting surfaces and membrane gaskets that secure critical assembly points. Seal interfaces between the cover plate and frame are engineered to sustain consistent protection in various site conditions. Tube entry points are managed through integrated membrane glands designed for reliable positioning.

The portfolio comprises single and double switches, push-buttons with indicator options, motion sensors, multi-gang socket outlets and keyswitch units. This system offers prewired German, French and British standard socket outlets rated at 16 A and 250 V, with a choice of additional options for 20 A and 32 A usage in high-demand environments. Additionally, by using adaptors for Legrand Arteor mechanisms, it is possible to integrate RSA standard socket outlets with the Plexo system.

Several components combine multiple functions in a single unit. A dual-function switch and transformer assembly offers three switch configurations - push-button, two-way and

double push-button, selectable via a quarter-turn dial. The transformer mechanism provides five lighting control options compatible with both push-button and switch inputs, ensuring streamlining installation and improving adaptability for varied lighting schemes.

The range incorporates Legrand's Arteor adaptor compatibility, allowing IP55-rated integration of USB Type-C, RJ45 and television outlets. Adaptors are equipped with protective flaps and can also accommodate Legrand Arteor mechanisms without extra support brackets. These features enhance the system's capacity to meet modern connectivity requirements.

Both surface-mounted and flush-mounted versions are available with finishes in anthracite grey, pure white and contemporary essential grey, suitable for interior and exterior installations. Surface-mount boxes include integrated membrane glands and support single, double, or triple-gang configurations.

Motion detection functionality includes two-wire and three-wire sensor variants. Two-wire models support LED, compact fluorescent and halogen loads up to 150W, while three-wire versions manage incandescent

and halogen loads up to 2000W. Sensors offer detection coverage of up to 12 metres with full 360-degree sensing and configurable lux thresholds between 5 and 1275.

The Plexo system is designed for both new-build and renovation applications. Surface-mounted options offer flexibility for retrofits and flush-mounted units allow for discrete placement in contemporary buildings. Installation is further supported by modular support frames and pre-drilled enclosure designs.

According to Legrand specialists, the enhanced Plexo range represents a significant advancement in weatherproof wiring technology, addressing the practical challenges faced by installers whilst expanding functionality to meet evolving building requirements. The redesigned system and expanded product portfolio provide solutions for increasingly complex electrical installations across all sectors.

The new range - which is compatible with existing Plexo installations - is available through Legrand's established distribution network, which offers a technical advisory and back-up service. Technical documentation and installation guides are also available from Legrand.







# P17 Tempra Pro

## Safe power in demanding environments



**Legrand's P17 Tempra Pro range of industrial plugs and sockets has been specially designed for safe and reliable use in demanding environments, including data centres, food preparation areas, industrial manufacturing facilities and outdoor installations, like car wash facilities.**

Many industries rely on quality electrical fittings that are easy to install and safe to use indoors and outdoors and which provide convenient and reliable access to plug points required in hot, damp, busy, risky areas. For contractors, intuitive features of this range simplify installation and maintenance, even in tight spaces, while operators benefit from consistent safety and reliability.

### Notable features of P17

Tempra Pro series include watertightness, corrosion resistance, impact strength and temperature endurance, to ensure high performance in challenging areas. These robust devices - available from Legrand in capacities from 16 A to 125 A - comply with IEC 60309 standards and fire safety requirements for self-extinguishing materials.

Mobile and panel-mounting sockets for indoor and outdoor use have an IP44 protection rating, safeguarding against the ingress of water. For harsher conditions, Legrand specialists recommend IP66/67/69 units that can withstand temporary immersion in water during heavy rainfall or flooding. Straight

plugs with screw connections are offered from 16 A to 125 A, supporting voltages of 100 to 500 V~ at 50/60 Hz.

Compact dimensions and a single screw per terminal simplify wiring, even in confined areas. A removable terminal cover on panel sockets, clear cable-stripping markings, the option of using ferruled cables and a quick opening and closing system improve installation efficiency. Mobile products are supplied assembled and unlocked, ready for immediate use.

Durability is enhanced through polyamide 6 housings, anti-corrosion treated screws and Stainless Steel springs for sprocket covers. The design withstands chemical exposure and harsh environmental conditions. IP44 models are manufactured from halogen-free recyclable materials, supporting.



Legrand's sustainability goals.

The P17 Tempra Pro range is fully compatible with Legrand's existing industrial socket systems and can be configured to meet specific site requirements. Specially designed accessories include surface and panel mounting sockets, mobile sockets with cable glands, adaptors, appliance inlets and blanking caps. Legrand also manufactures distribution trunking systems and thermal magnetic circuit breakers, providing a comprehensive industrial power portfolio.

The range is distributed nationally through Legrand's South African network, supported by technical advisory services to assist specifiers and contractors in selecting the correct configuration for each project.

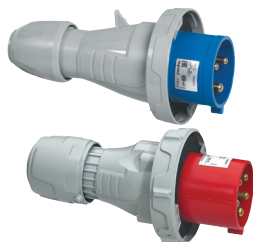
Legrand's P17 Tempra Pro industrial plugs and sockets have been developed for safe and reliable use in many environments, including shopping centres, hospitals, office buildings and data centres, the food and beverage sector, hospitality and leisure, as well as transport facilities and general industry.

#### Suggested caption

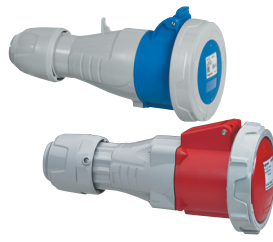
P17 Tempra Pro plugs and sockets have been developed by Legrand with both safety and practicality in mind. P17 Tempra Pro plugs and sockets are suitable for challenging indoor and outdoor applications, where safe and reliable electrical connections are critical - including hot industrial kitchens, damp washdown zones, exposed outdoor areas and sensitive data facilities.



Surface mounting  
sockets



Straight plugs



Mobile sockets



Panel mounting  
sockets



Surface mounting  
sockets





# SERVING OUR CUSTOMERS



#LegrandImprovingLives

Putting our customers at the heart  
of our concerns is essential if we are  
to meet their expectations.

Legrand's full CSR strategy is available on  
> [www.legrand.com](http://www.legrand.com)