

NEWSLTR

#04 IMPROVING LIVES

PG. 3 BUSINESS NEWS

Legrand South Africa -
Diversity, Adaptability &
Success

PG. 8 LEGRAND SOLUTIONS

Cable Marking Systems,
Wireless Chargers,
Busbar Trackways

PG. 16 DISTRIBUTORS & RESELLERS

Lite-Glo, Cronlec,
Hi-Tech Lighting and Key
Electrical, plus a look at
Botswana



#legrandimprovinglives



Johan Bosch
General Manager Legrand South Africa

FROM THE GM'S DESK...

With the long dark shadow of Eskom loadshedding looming over our country, our struggling economy has been taking quite a knock. However, we remain thankful for things like the Springboks' Rugby World Cup victory to lift the country from its collective gloom and doom.

South Africans by nature are resilient though, and despite any obstacles we face, we always endure within the spirit of Ubuntu. At Legrand South Africa, this spirit of togetherness, resilience and endurance is never more alive!

2023 saw growth within our business, particularly in the data centre domain. Our new DC installation in our Johannesburg showroom and the deployment of our national service team, are contributing factors towards this. The launching of new Smart PDU's, Hot and cold aisle containment, Rear cooling solutions, High density Fiber solutions, are just a few products that contributed towards this DC success also.

We remain as ever, very thankful to you, our loyal Clients, and Partners. Without you, our business is in nonexistence. As we enter the festive season, I would like to wish all our Christian Clients, a blessed celebration over the life of Jesus. And if you are travelling, I wish you safe journeys, and joyful times with your families.

CONTENTS

03 Diversity, Adaptability & Success

The Legrand South Africa Team - individuals with unique qualities achieving collective success.

04 Legrand News

- Data Centers pivotal to South Africa's digital transformation.
- Legrand SA - proactive in addressing mental health in the workplace.

08 Legrand Solutions

- Cable Marking Systems designed for flexibility, reliability, ease of installation and optimum safety in any application.
- Wireless charging - everywhere, with total freedom.
- Discover why manufacturing and industrial companies can benefit from track busway systems.

16 Customer Spotlight

- Lite-Glo - moving towards bigger opportunities
- Connected Home showrooms at Cronlec in the Western Cape, Hi-Tech in Pretoria and Key Electrical in Midrand
- Focus on Botswana

The Legrand NEWSLTR publication team would like to thank all the participants:

DIRECTOR OF PUBLICATION: Melanie Vosloo
EDITORIAL STAFF: Melanie Vosloo, Shaun Dobbs, Nthabiseng Ntengo, Hendrick Sebola, Lindy Morton
LAYOUT: Shaun Dobbs
PHOTOS: Legrand, Shutterstock
All rights reserved © Legrand December 2023



Legrand Johannesburg Office and Warehouse Team

DIVERSITY, ADAPTABILITY AND SUCCESS

South Africa is an incredibly diverse nation shaped by multiple cultural influences. The same applies to the Legrand South Africa team, which comprises people from all walks of life, each bringing to the table unique qualities to rise to challenges and achieve collective success.

For the Legrand Group's South African subsidiary, diversity is about more than inclusivity: it is a driver of performance, allowing the team to seize the opportunities presented by strong growth in data centers and connected home solutions. Over the past 38 years, Legrand has built a reputation among specifiers and users in South Africa as a benchmark for quality, design and reliability, in particular in Arteor and Arteor with Netatmo wiring devices, the LCS3 range for data centers, and UPS. The South African subsidiary's steady growth – built on an excellent team, and outstanding products – is a source of pride.





DATA CENTERS PIVOTAL TO SOUTH AFRICA'S

Data centers in South Africa play a crucial role in the country's technological landscape, serving as the backbone for the rapidly growing digital economy. As businesses and individuals alike embrace digital transformation, the demand for robust and efficient data storage and processing facilities has surged, driving the establishment and expansion of data centers across the nation.

South Africa's data center industry has experienced significant growth in recent years, propelled by factors such as increasing internet penetration, rising smartphone usage, the adoption of cloud computing, the roll out of 5G and Fiber to the Home, and the landing of sub-sea cables. As we have access to more data, the need for secure and reliable infrastructure to store and manage this data has become paramount.

One of the key drivers behind the proliferation of data centers in South Africa is the country's strategic geographical location. Positioned as a gateway between Africa, Europe, and the Middle East, South Africa serves as a vital hub for data traffic. This geographical advantage has led to the establishment of data centers that cater not only to local businesses but also to international enterprises seeking a foothold in the African market. We currently have 5 sub-sea cables landed on our West coast, and 4 landed on our East coast, bringing even more data to our shores, and at a speed of up to 20 terabits per second.

The reliability and efficiency of data centers are crucial for businesses operating in the digital era. South African data centers have made significant investments in cutting-edge technologies to ensure high levels of uptime and optimal performance. Advanced cooling systems, redundant power supplies, and top-tier security measures are integral components of these facilities, ensuring that businesses can rely on them for their mission-critical operations.



ERS

DIGITAL TRANSFORMATION

Moreover, South Africa's data center industry has been proactive in adopting green technologies to address environmental concerns. Energy efficiency is a top priority, with many data centers implementing sustainable practices such as using renewable energy sources and optimizing cooling systems to reduce their carbon footprint. This commitment to environmental responsibility not only aligns with global sustainability goals but also positions South Africa as a leader in the responsible development of digital infrastructure.

The impact of data centers extends beyond just providing storage and processing capabilities. They also contribute significantly to job creation and skill development. The construction and ongoing operation of data centers require a skilled workforce, fostering employment opportunities for a range of professionals, from data center technicians to IT specialists. Additionally, the demand for data-related services has led to an increased focus on education and training programs, ensuring that South Africa has a workforce equipped with the skills necessary for the digital economy.

Data centers in South Africa are pivotal to the nation's digital transformation journey. Their strategic location, commitment to cutting-edge technologies, and focus on sustainability position them as key players in the global data infrastructure landscape. As South Africa continues to embrace the digital age, the role of data centers will only become more prominent, driving innovation, economic growth, and connectivity across the region and beyond.





BUSINESS NEWS



MENTAL HEALTH IN THE WORKPLACE

Let's face it, times are tough. The stresses of daily life: loadshedding, the cost of living, crime, health concerns, personal relationships and of course, stress in the workplace, all add up. Navigating these stresses take their toll on all of us in one way or another, and of course, they can diminish our ability to function effectively.

In recognising this, in September 2023, Legrand South Africa implemented an EAP (Employee Assistance Programme), to help our employees in dealing with issues that affect them socially, financially, physically and psychologically.

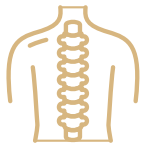
The ICAS Programme aims to achieve all round employee wellness by providing the following services:



A dedicated 24/7/365 hour telephonic counselling and support service

This support line provides direct, unlimited and confidential access to live professional telephonic support to your eligible employees and all their immediate dependents. This service is provided exclusively by a team of registered professionals i.e. Psychologists, Social Workers and registered EWP counsellors.

The telephonic counselling is available to help with: Stress and Anxiety, Relationship issues, Finances, Organizational issues, Absenteeism and Adjustment problems.



MSK Health Management

This service provides musculoskeletal management affecting workers worldwide, like lower back, neck and shoulder pain.



Health @hand

Employees are provided with a formal professional outlook regarding what a specific individual should or should not do to preserve health. These services are provided exclusively by a team of Medical Experts, who provide frontline support and advice for any medical issue that employees may face. Support is provided on the following (but not limited to): Heart Disease, COVID – 19, Chronic Illnesses, Parenting Support, Cancer, Weight loss resources and HIV/AIDS Counselling and Support Services.



Life Management Services

LEGAL WELLBEING - This service includes unlimited telephonic legal advice pertaining to any legal aspects such as: Contracts, Property, Taxation, Pension, Retirement, Third Party Claims and Wills and Testaments.

FINANCIAL WELLBEING - Financial mentors are accessed via the ICAS multilingual South Africa based call centre, with services including: Financial Tools, Credit Report Advice, Savings and Investment Advice, Check Garnishee Orders and Loans, Tax Advice, Estate Planning and Debt Relief Solutions.

FAMILY CARE SUPPORT - A team of professionals including social workers, psychologists, and medical and legal practitioners with expertise and experience provide services for: Childcare, Eldercare, Education and Social Benefits, as well as Disability.

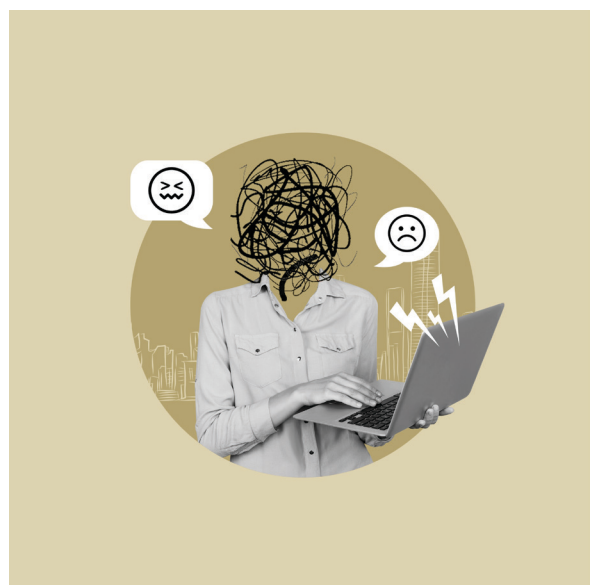
Furthermore to these services, the programme offers face-to-face counselling for all employees and their immediate dependents. Counselling sessions are made available too (depending on the nature of the presenting issue and the required plan) in conjunction with a dedicated Case Manager.

GROUP AND INDIVIDUAL TRAUMA

This service assists during traumatic experiences such as personal experience of a car hijacking or witnessing an event such as an accident, suicide, being involved in a car accident, loss of a colleague, family member, and all other events.

THE PROGRAMME IS 100% CONFIDENTIAL

The ICAS multi-disciplinary team of health professionals are also completely ethical in accordance with South African and global best-practice standards. Participation by employees in the EWP is encouraged by pre-emptive awareness and service offerings. These are neutral in tone using inclusive, welcoming messaging aimed at reaching the multigenerational workforce.





LEGRAND SOLUTIONS

SWIFT & FLEXIBLE CABLE MARKING SYSTEMS

Legrand's cable marking systems have been designed for flexibility and reliability, as well as easy installation and optimum safety in any application, including original installations, extensions and modifications.



Legrand's Starfix crimping tools efficiently perform four functions in one operation, offering time savings of more than 50 % compared with traditional tools that complete the same tasks. The Starfix crimping tool cuts, strips, twists and automatically crimps each Starfix ferrule onto the cable.

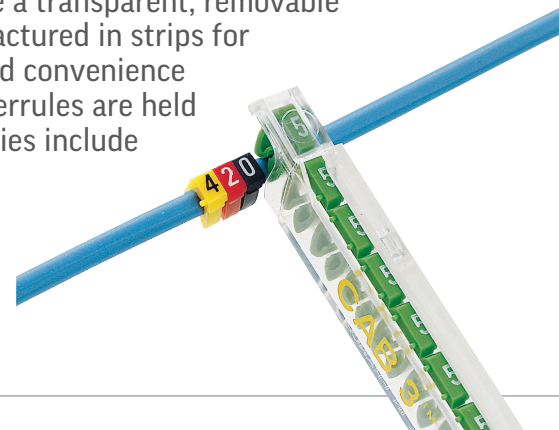
Starfix crimping tools are available in three sizes for cables from 0,25 mm² to 5 mm² and multi-purpose crimping tools are designed for cables from 0,5 mm² to 2,55 mm².

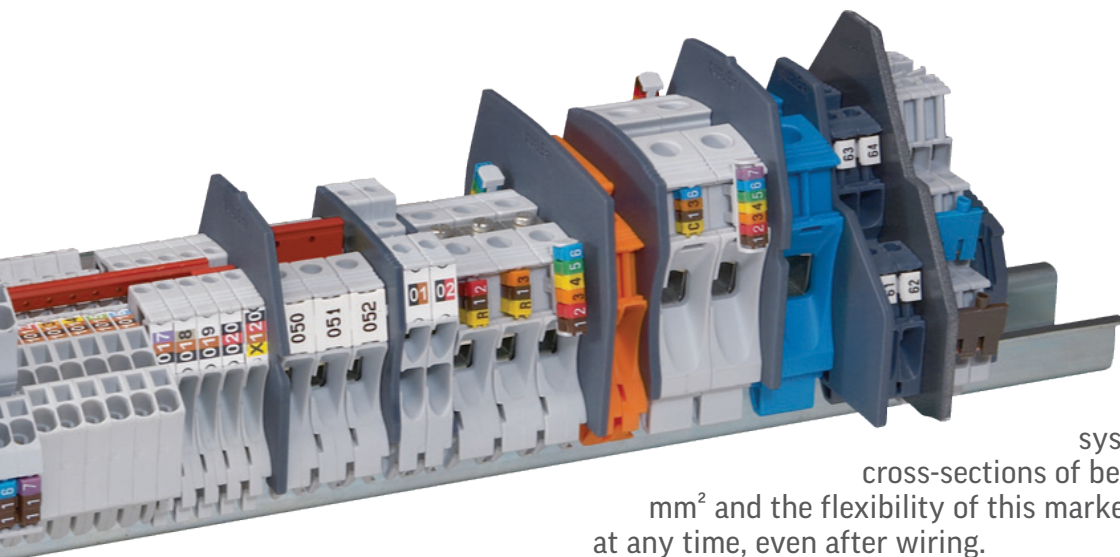
This easy to operate tool has a fully adjustable wheel which is set to the cross section of the cable. The cable is cut to the required length, automatically stripped and then twisted by tightening the tool and pulling the cable to remove the insulation.

Ferrules, with an insulating flange, are then dispensed and crimped. The flexible design enables right and left-handed users to easily perform these functions.

For immediate recognition of the appropriate cross-section of ferrules, they are colour matched with applicators that have a transparent, removable protective cover. Ferrules are manufactured in strips for simultaneous separating and crimping. For easy handling and convenience on site, they are supplied in sachet or box packing. As the remaining ferrules are held firmly in the box packing option, there is never any wastage. Accessories include cutting and crimping blades, as well as fixing components.

Legrand's CAB3 cable marking system offers a dependable solution to multiple cable and terminal marking requirements. Universal fittings ensure clear, rapid marking and simple modifications. This





easy to use system is suitable for marking cross-sections of between 0,15 mm² and 6 mm² and the flexibility of this marker means it can be applied at any time, even after wiring.

CAB 3 is supplied in strips for easy handling and less wastage and consists of numbers, letters, conventional symbols and international colour coded markers. The system also comprises label holders and a re-usable applicator that facilitates fast distribution of markers.

Legrand's Duplix open or closed cable marking system, enables the user to prepare either in advance or on site, two identical marking strips in a single operation, for use on the leading and trailing end of the cable. All the user has to do is fold two carrier strips together, clip the first marker on the first carrier, twist the device and clip again on the other side.

This second clip action automatically breaks the marker from the strip. This process is repeated until the desired combination is complete and the two carriers are easily separated and attached to the cable with cable ties.

Legrand's easy to use, perfectly aligned Memocab cable marking system offers quick, secure and reliable black marking on a white background.

These marker carriers can be prepared in advance off site and are easily installed on a cable in just one operation. As markers do not have to be installed on the cable individually, time savings are considerable, particularly for long markers. Carrier strips are colour coded for easy identification and accurate matching of markers.

The double prong removes two markers at the same time and installs them concurrently onto double pre-cut marker holders. Marker holders are easily separated and simultaneously installed as permanent markers on either side of the cable.

Memocab is supplied in strips of 24 and facilitates easy portability to site, reduces loss or damage to markers prior to installation and enables the direct preparation of a list of markers on the tray before marking them up.

This system, which is suitable for use in all installations, has high resistance to aggressive environments.

Legrand's Viking 3 terminal blocks - with screw or automatic spring or heavy-duty connection options -



LEGRAND SOLUTIONS

SWIFT & FLEXIBLE CABLE MARKING SYSTEMS

form the core of a reliable and easy to use connection system in wiring installations.

A notable feature of Viking 3 terminal blocks is that one marking system may be used for simultaneous identification of wiring and terminals. Compatible cable marking systems include Legrand's CAB3 marking system and Starfix crimping tools and ferrules.

Viking 3 V2 polyamide terminal blocks have been designed to make an efficient connection between two rigid or flexible copper wires, ensuring easy installation, clear marking and optimum safety.

The perfectly shaped entry to the terminal acts as a guide for the conductor, facilitating perfect positioning for a quality connection. The cable is reliably and safely clamped in the terminal by constant contact pressure of the clamp/bar system.

This system allows intervention for measurements or maintenance on a current, voltage and power measuring circuit, by keeping the current transformer secondary circuit closed. Insulated bridging bars and combs have integral test sockets and identification rings for quick and easy testing.

Accessories include end stops and brackets for mounting; marking holders and plates; polyamide insulation barriers, safety screens and protective covers; measurement and testing plugs and sockets, as well as connection bridging combs, bars and brackets. Specially designed measurement accessories are also available for these screw and spring terminal blocks.

Viking 3 terminal blocks - which are colour coded for easy identification and accurate installation - comply with local and international quality and safety specifications, including RoHS (Restriction of Hazardous Substances) requirements, international approvals for ATEX certification and stringent IEC standards.

Colson Cable ties also play an important part in any cable management system. For optimum performance and extended service life in hazardous and corrosive environments, Legrand specialists advise that cable ties should have ultra-violet and corrosive resistant qualities and should be able to withstand operation in temperatures between -40°C and +85°C.



It is also important that cable ties are flame retardant (self-extinguishable - conforms to UL 94 requirements, HB classification) and have good resistance to bases, oils, greases, saline mist and oil products. Cable ties for indoor applications do not require such stringent features.

Legrand makes a substantial investment to continually upgrade and improve its extensive range of products and systems for electrical installations and information networks, to meet exact market requirements.



CHARGE

THE WAY YOU LIVE

15 W



With Legrand's new 15W induction chargers, experience the best of wireless, unconstrained technology.

No more flat batteries!
You can listen to music, watch a film, or keep in touch with family, colleagues and customers without any restrictions.

Specially designed for mounting horizontally on furniture in passageways or transit areas, offices or kitchen surfaces, etc.

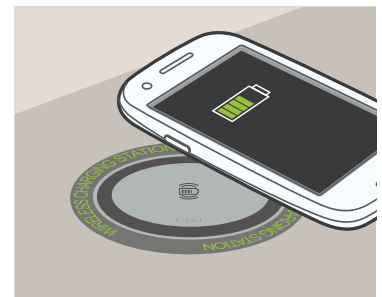
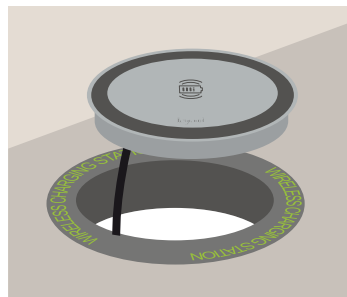
- Wireless charger with an 8 cm² induction antenna for fast charging a smartphone.
- Standby power consumption < 0.07W
- Energy efficiency > 85%
- Conforms to the WPC (Wireless Power Consortium) Qi standard
- Does not interfere with other wireless signals (Zigbee, DTT, GSM, 4G, etc.)



- **Wireless Power Consortium: 750 members, ensuring interoperability with induction-compatible phones**
- **Qi: global standard adopted by vehicle manufacturers and cafés/hotels/restaurants**
- **Products certified for professional Qi 1.2.3 projects**

Ergonomically designed to suit different environments

Horizontal charging on furniture



Insertion in an 80 mm diameter cut-out / Fixed into furniture
External power supply with 2.5 m cord



LEGRAND SOLUTIONS



BUSBAR TRACKWAYS NOT JUST FOR DATA CENTERS

An effective and reliable power distribution system is an essential element for any manufacturing or industrial facility. For decades, manufacturers and other industrial companies have relied on traditional electrical conduit and wiring systems –informally known as “pipe & wire systems”– to deliver power to manufacturing equipment, such as assembly line machinery. Effective power delivery allows those machines to produce the goods that the company needs to fill orders for consumers and/or B2B customers.

But traditional pipe & wire systems have numerous drawbacks, the chief one being their lack of flexibility in adapting to changes. Whenever manufacturers must move, add, or replace machinery on the factory floor, they must often reconfigure their power distribution system as well. They must tear out electrical conduit and wiring, and rewire the system to bring the requisite power to the machines in their new locations. These changes are often done at great trouble and cost to the company, with a potential loss of profits due to decreased productivity and downtime.

Fortunately, there is an alternative. A track busway system provides the same high-performance power delivery as traditional pipe & wire systems. But track busways also offer the flexibility to make quick and easy changes in your power distribution layout, and the scalability to accommodate additional and/or higher power loads. A track busway system lets you adapt your power distribution to the changing needs of your facility, with far less trouble and cost.



Although track busway systems are commonly used in data centers, many manufacturing and industrial companies have yet to discover their benefits. Numerous industrial settings that can benefit from using a track busway power distribution system. These include:

- **Automotive manufacturing and supply facilities**
- **Air & defense manufacturing**
- **Airports, truck terminals, and other transportation centers**
- **Computer Numerical Control (CNC) machine shops & 3D printers**
- **Distribution centers**
- **Food & beverage manufacturing & processing plants**
- **Indoor agricultural cultivation & green facilities**
- **Medical device & Biopharma manufacturers**
- **Research laboratories**
- **University, trade school, or public school laboratories**

ADVANTAGES OF A TRACK BUSWAY SYSTEM

FLEXIBILITY FOR CHANGE

Since a track busway system is not hard-wired into the ceiling or walls, it gives you the flexibility to make quick changes in the layout of your power distribution system. If you need to reconfigure assembly lines on the factory floor, you can easily reorganize your track busway grid to accommodate the new locations of machinery. All you have to do is take down the track busway sections, move them to the new positions, and reconnect the busway sections and plug-in units above the machines they serve. You can often do this in a matter of hours or overnight, instead of days or weeks, with little or no production downtime.

SCALABILITY

A track busway system grows with you. If you need to expand the layout of your assembly lines, you can add additional busway sections to your existing grid to distribute power to the new machines. If you build a new manufacturing facility, or expand your facility by adding an additional wing, you can easily install a new track busway system to support it.

If you need to scale up power (i.e. for a new machine that requires 40 amps instead of 30 amps), you simply need to replace the old plug-in units with new ones that are designed to support higher power requirements. It only takes a few minutes to swap out plug-in units, and this can be





LEGRAND SOLUTIONS

ADVANTAGES OF A TRACK BUSWAY SYSTEM

EASY INSTALLATION

Track busway systems can be **installed up to 90% faster** than traditional pipe & wire systems, and with far less labor for installation. Where it may take days or even weeks to install electrical conduit and wiring, a track busway system can be installed in just a few hours or overnight.

(If you're replacing a pipe & wire system with a track busway system, and the assembly lines and work stations are already in place on the factory floor, you may be able to install the track busway systems with little or no downtime to the production environment.)

LOCALIZED POWER DELIVERY

With track busway systems, all the necessary components in a complete electrical distribution system –breakers, connectors, power outlets, metering, surge protection, etc.– are incorporated into the plug-in units. By installing busway systems and plug-in units directly above your assembly lines and work stations –that is, above or near the machines they feed– you can deploy power throughout your facility and position it at the exact point of use. In other words, you are bringing the power source to the machines instead of trying to wire the machines back to the power source at a distant panelboard or outlet receptacle.

Track busways can deliver power levels of between 40 and 1200 amps, and up to 600 VAC or VDC, single-phase or three-phase. (100–225 amp busways are the most common in manufacturing facilities.) Depending on its length and power delivery rating, a single busway section can support multiple plug-in units. Also, depending on the number of outlets it has, a plug-in unit can support multiple power cords. These features allow you to provide power to multiple machines in one location.





LINEAR DESIGN

The simple linear design of track busways is much more organized, making it easier to design, install, maintain, and make changes to the system layout.

REUSABLE COMPONENTS

Track busway sections and plug-in units are reusable, and can be moved from one location to another. Unlike traditional conduit and wiring, when you make changes to your track busway system, you don't have to recycle or throw out the old components and start all over again.

EASIER MAINTENANCE AND REPAIR FOR MACHINERY

A track busway system makes it easier to do maintenance and repair on individual machines on the factory floor, since breakers and fuses are located within the plug-in units themselves, instead of at a distant panelboard. To turn off a machine, you simply have to flip the corresponding breaker switch on the plug-in unit for the machine you need to service. This cuts power to that one machine, while the other machines powered by that plug-in unit remain operational. (This also reduces the chance that you will accidentally unplug the wrong machine, since you know which machines are served by which plug-in unit breakers.)

If a fuse blows, you can easily remove the plug-in unit from the track busway, replace the fuse, and return the unit to operation. You can switch out the plug-in unit while the track busway is live, without cutting power to other plug-in units, or other machines, powered by that busway.

SAFETY

All track busway systems have built-in safety features. For example, the track busway grid includes a ground path (earthing) system throughout its enclosure. All plug-in units have a grounding feature that connects to the ground path when you insert the unit into the busway's open channel. This ensures that the plug-in unit is grounded before the electrical connection is made to the power busbars.

Additionally, since the plug-in units provide localized power to your machines, you don't need to run power cables and extension cords across the factory floor to plug them into a distant, overloaded receptacle. This eliminates both a potential fire hazard and an OSHA violation (i.e. tripping hazard) that could result from using these cords.

A FUTURE PROOF SYSTEM

If your factory floor requires frequent changes, you don't have to worry if your power distribution system will need to be reconfigured six months or a year from now. The flexibility of the track busway system guarantees that you will be able to make quick and inexpensive changes to your power distribution layout to accommodate any future changes in machinery and assembly lines.



FOR MORE INFORMATION ON LEGRAND'S BUSBAR SOLUTIONS AS WELL AS ASSISTANCE WITH YOUR PROJECT, FROM PLANNING THROUGH TO INSTALLATION AND AFTER SALES, CONTACT US ON: 011 444 7971 OR E-MAIL: LEGRAND.SOUTH-AFRICA@LEGRAND.CO.ZA



DISTRIBUTORS & RESELLERS



LITE-GLO

moving towards bigger opportunities

In 2024, Lite-Glo will be celebrating their 40th Anniversary. A significant milestone for the company which, through much hard work and dedication, has established itself as a significant and instantly recognisable presence on the Johannesburg electrical landscape. This is certainly, in no small way, also attributed to their focused vision of supplying all Contractors, Electricians and Businesses as well as the General Public, with the best available Lighting, Solar, Electronic and Electrical equipment whilst also delivering excellent customer service and technical support.

As Legrand South Africa's appointed Distributor for Gauteng, Lite-Glo exemplifies just what a strong, lucrative and brand loyal partnership is. Having been a part of their journey for many years, we have never been more excited as they embark on their next step.

Having seen their business expand over the years, and the significant increase in their customer base, their current space on Bram Fischer Drive in Randburg could no longer accommodate their needs. More room was required for additional employees, stock, and a new and improved showroom.

Not an endeavour to be taken lightly, Lite-Glo enlisted DBM Architects to design their new store. With construction nearing completion, just a couple of blocks down from their current premises, the bigger building is going to provide the necessary space for them to optimize their operations and better serve their customers, whilst allowing for overall efficiency and productivity. Katie Milosevich, Marketing

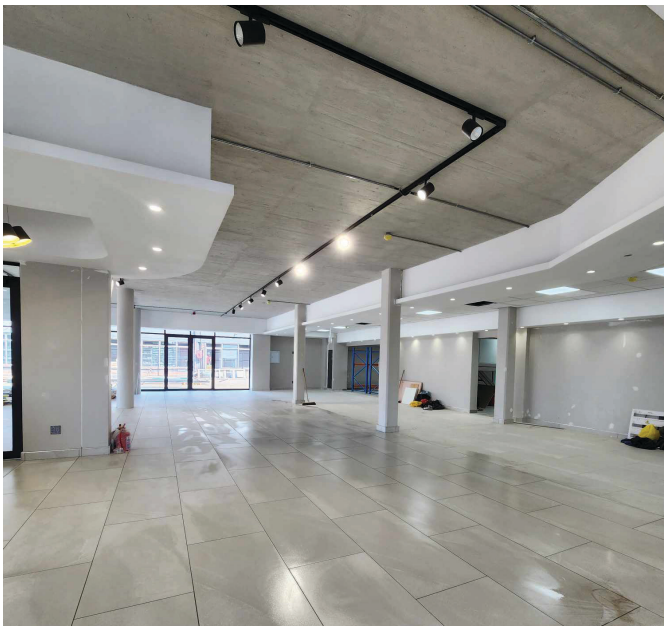
DISTRIBUTORS & RESELLERS



Manager for Lite-Glo, says “With more space, we will be able to design our workflow in a way that streamlines processes and reduces bottlenecks”.

Additionally, the move presented the opportunity to create a more modern and inviting environment for employees and clients alike. Improved facilities, amenities and showcasing a magnificent new showroom space, it will all provide for a more comfortable and functional workspace.

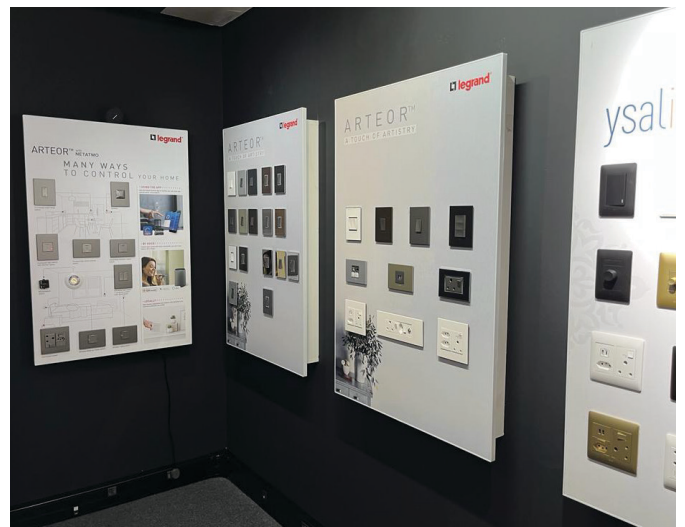
“The move signifies a significant milestone in our growth and success as a company” Katie added. “It represents our commitment to expansion and our confidence in the future. We are excited about the potential that the bigger premises offer and look forward to the opportunities they will bring”.





DISTRIBUTORS & RESELLERS

CRONLEC showroom



cape town

DISTRIBUTORS & RESELLERS



pretoria



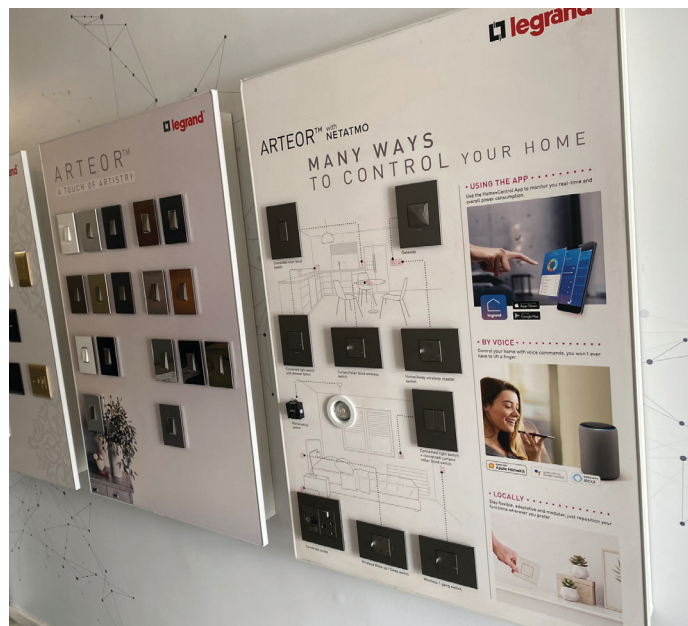
HI-TECH showroom



DISTRIBUTORS & RESELLERS



KEY ELECTRICAL showroom



midrand



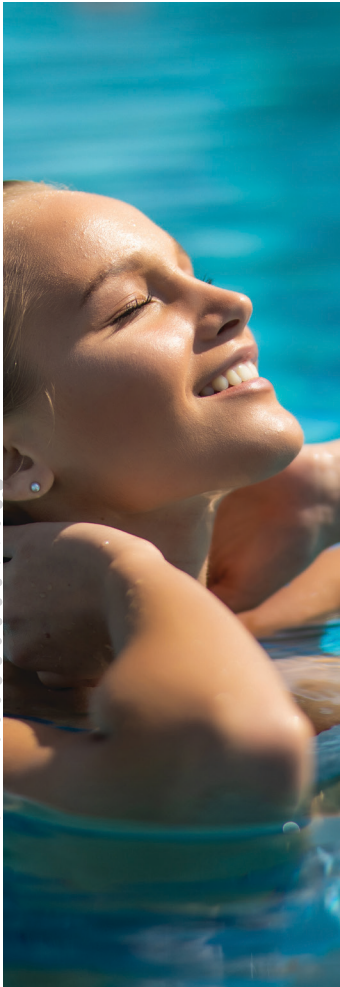
FOCUS ON BOTSWANA

With a population of about 2.3 million people, since independence, Botswana has had one of the fastest growth rates in per capita income in the world.

Energy in Botswana is a growing industry, with it recently breaking ground on the multi-billion Mmamabula coal project. This project, helmed by Independent Power Producer, Jindal, aims to operate three surface mines in the rich coalfields of Mmamabula, as well as a power plant. The mine's development will meet the demands of a 600MW power station that Jindal will build, run and maintain at their cost, while selling power to the Botswana Power Corporation under a Power Purchase Agreement. The deal is expected to bolster the country's power security and also supply the rest of Southern Africa which has struggled with power deficiency.

With this positive outlook for Botswana, Legrand's strong partnerships with signed Legrand distributors, Shield Engineering and Sharps Electrical, ensure a strong foothold in the flourishing economy, with particular investment in power distribution products, wiring devices and cable management. Their enthusiastic appreciation for Legrand's product offering has meant that these distributors have appointed Legrand Ambassadors. These Ambassadors are both well trained and knowledgeable in being able to offer the correct product solutions to their clients.

Listed Legrand Resellers in Botswana; Northern Electrical, M&P Cables, Electrical Distributors, Capital Electrical, Tri Holdings, SDM and Lesedi Boards will, from 2024, be able to order and draw stock from these approved Legrand Distributors.



Bluetooth Programmable Time Switch

FAST & EASY PROGRAMMING VIA BLUETOOTH FROM A SMARTPHONE/IPAD/PC ON THE APP
LEGRAND TIME SWITCH
(FREE ON APP STORE AND GOOGLE PLAY)



ideal to control pool pumps
air conditioning,
garden lighting and water systems





WHAT IS AN OUTLET'S FAVOURITE SONG? - **I'VE GOT THE POWER**

WHY DO FLUORESCENT LIGHTS KEEP HUMMING?

- **BECAUSE THEY CAN'T REMEMBER THE WORDS.**

WHAT DOES ONE ELECTRICIAN SAY TO ANOTHER WHEN THEY RUN INTO EACH OTHER OUT IN PUBLIC? - **WATT'S UP?!**



word search



A	R	T	E	O	R	T	G	W	D	C	A	J
M	C	P	Y	Q	O	F	H	X	U	N	M	Z
R	E	W	O	P	I	V	Y	A	C	T	P	E
I	L	A	T	E	K	C	O	S	B	G	J	M
P	E	T	G	S	A	L	V	H	A	U	P	A
N	C	T	Q	W	K	E	I	Y	T	L	N	R
I	T	F	R	O	S	G	W	V	B	H	I	F
J	R	D	G	F	W	R	S	I	P	V	X	S
W	I	R	E	Y	V	A	A	Z	B	M	D	L
R	C	B	T	M	O	N	O	B	L	O	C	K
D	Q	L	C	G	E	D	Z	M	S	W	P	I
F	O	Z	B	S	U	R	G	E	Q	U	H	G
V	Y	E	C	I	R	C	U	I	T	F	B	X

LEGRAND
ELECTRIC
BUSBARS
AMP
YSALIS
VOLT
ARTEOR
CIRCUIT
SOCKET
POWER
WATT
MONOBLOC
WIRE
FRAME
SURGE



August 2023 -
Women's Day Spoils for the
ladies of Legrand SA



legrand® PHOTO WALL



20th July 2023 - Full house at
our Innoval Center in Sandton for
the Arteor with Netatmo Installer
Accreditation Training

