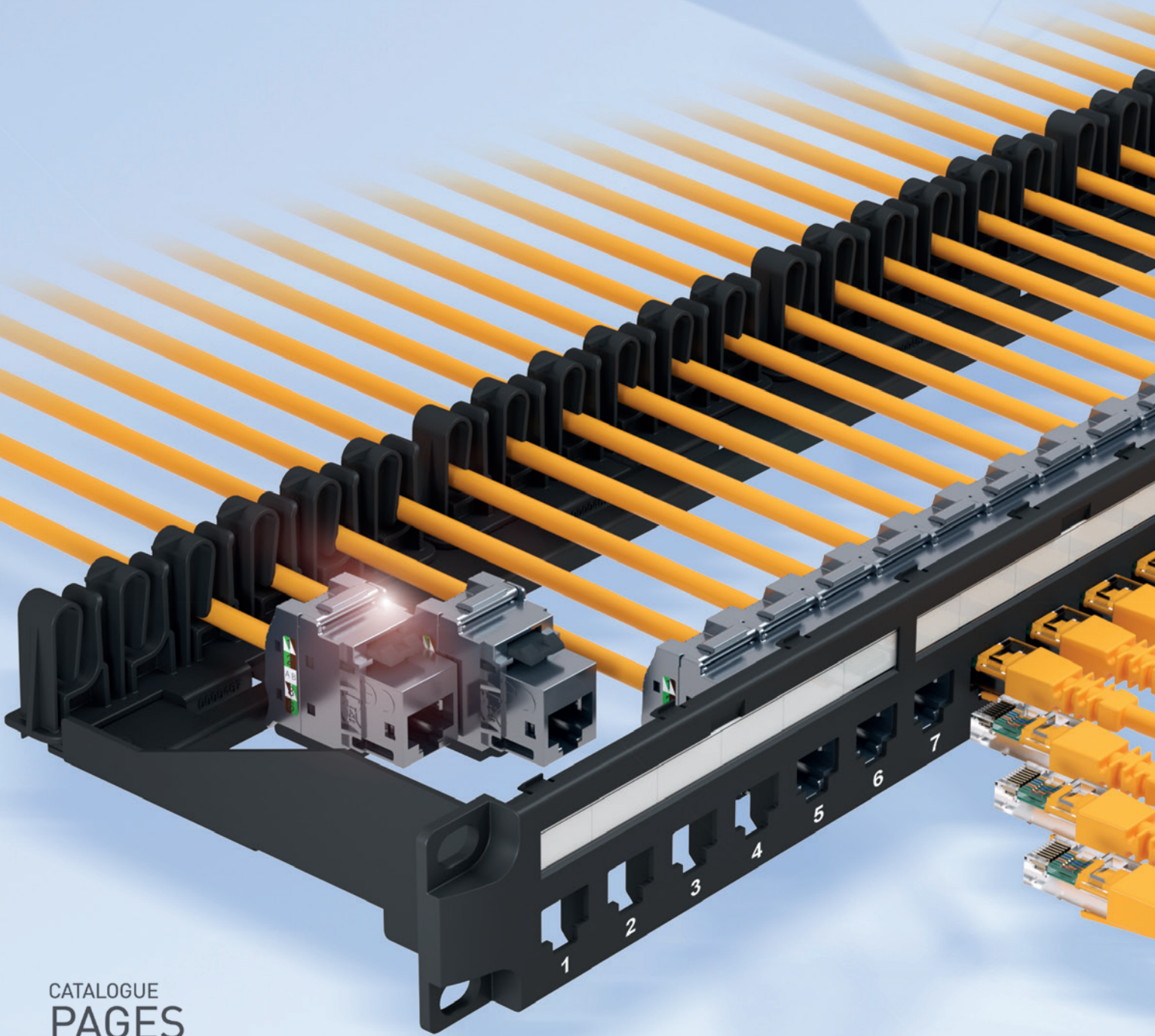
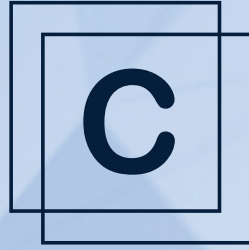


# LINKEO

Build connection

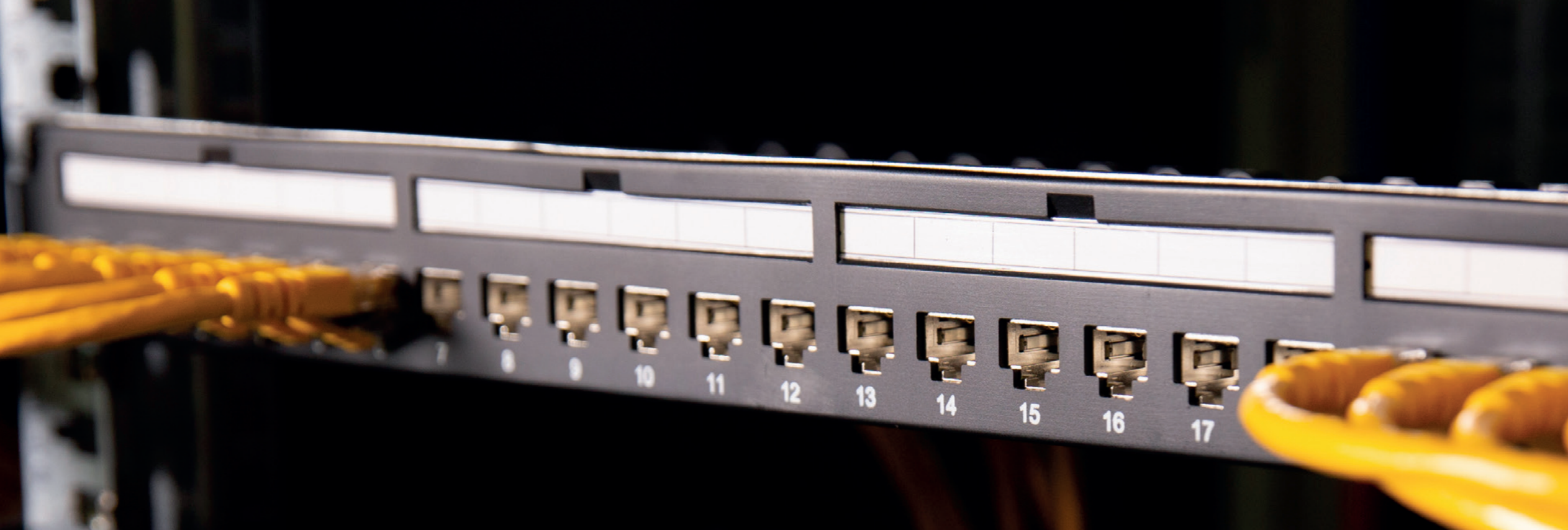


CATALOGUE  
**PAGES**  
INSIDE

GLOBAL SPECIALIST IN ELECTRICAL  
AND DIGITAL BUILDING INFRASTRUCTURES







# LINKEO

Build connection


You told us: "cabling system that's easier and faster to install".

LINKEO C meets your expectations.

Introducing LINKEO C, our new structured cabling system dedicated to the LAN environment of small and large companies. Unique and innovative, LINKEO C is designed to provide installers with a complete and comfortable solution, quick to install and maintain, while providing performance with a 25-year warranty.

Discover how LINKEO C solutions speed up your installations, save your time as well as increase your productivity. ■



 To know more watch the tutorials: connectors termination & range presentation

## UNIQUE DESIGN

Adopt a connector of unprecedented unique design: **toolless and easy-to-use**, effortless, take the advantage of the Legrand signature.

*"I can terminate and re-terminate easily, without any problems."*  
A telecom network technician

## FAST TERMINATION AND RE-TERMINATION

Each connector of the LINKEO C range can be **terminated under 1'10"**. And everything else is just as easy.

*"I save dozens of seconds per connection which transforms into hours at the end of the week."*  
A telecom network technician

## PERFORMANCE

Choose from a complete range, **from cat. 5e to cat. 6A**, available in unshielded and shielded versions.

*"We share gigabytes of data every day without a glitch."*  
A digital artist in the 3D animation industry



# A superlative connector

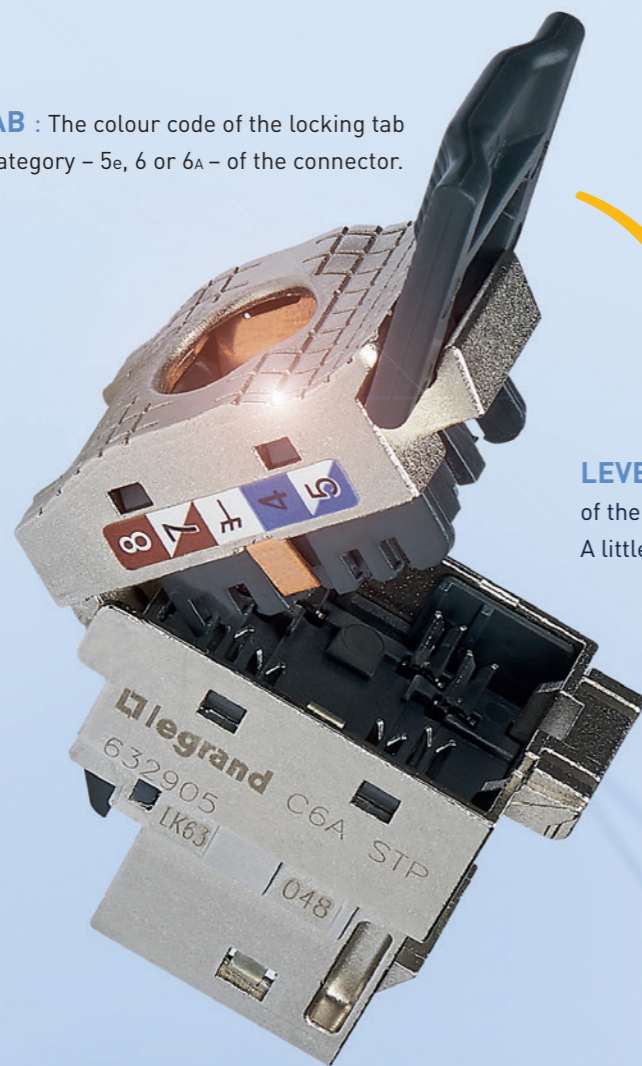
The new **LINKEO C** system brings to market a **toolless keystone connector enabling fast connection in all categories from 5e to 6A**. **Simple and quick to terminate, its one-touch locking guarantees superior reliability for data transmission**. **Eco-designed and minimalist, its packaging reduces unpacking and waste: 100% neutral cardboard, no more plastic.** ■



## Designed to speed up your work

The innovative design of the LINKEO C keystone connector meets the expectations of professionals for simplicity and ease of installation. Its ergonomic design enables quick toolless connection. A greater comfort for reduced effort. It's easy to connect, disconnect and reconnect with no damage to the product. ■

**LOCKING TAB** : The colour code of the locking tab indicates the category – 5e, 6 or 6A – of the connector.

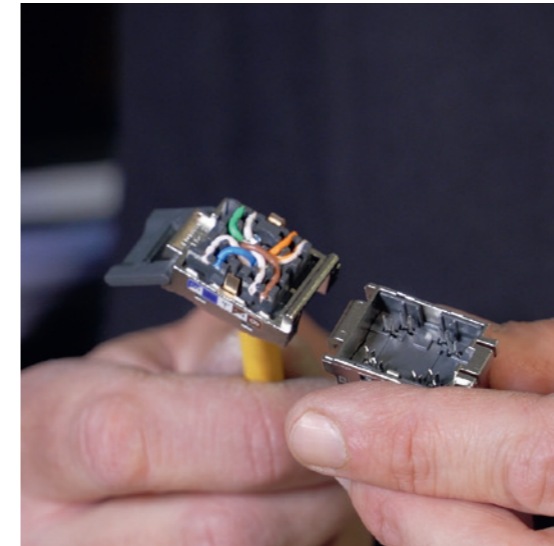


Push down the lever. Safely lock the connector.

**LEVER** : The optimized size and ergonomic shape of the lever means less pressure is required to manipulate it. A little of effort saved with each connection.

The design of the connector eliminates any risk of accidental opening. Its mechanical locking clip secures the termination and transmission of data. Simply disconnect and reconnect.

**JACK** : The jack and the lever can be separated to ease the process of re-termination.



## Fast termination and re-termination

LINKEO C keystone connector is designed to make every step of the installation and maintenance process quick and easy. Each connector can be terminated under **1 minute 10 seconds**. And disconnected and re-terminated, without tools or any damage, in a matter of seconds. Connectors stay ready to use, again and again. ■

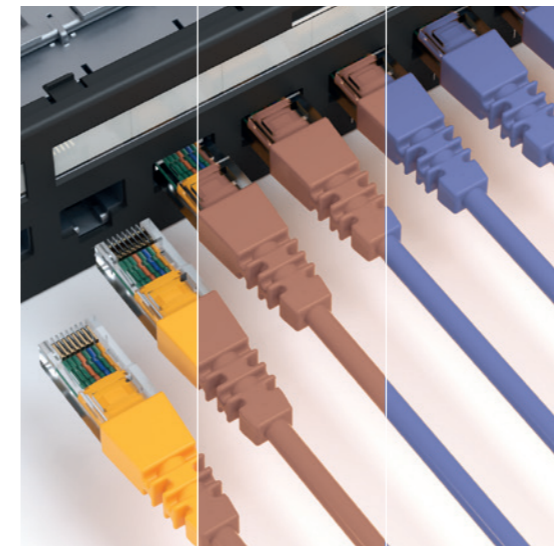
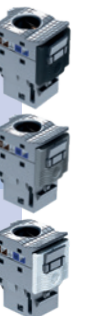
*"Hearing your priorities in the field, we understand your need to optimize installation time."* A Legrand design manager, Saint-Marcellin site in France

## From 5e to 6A, the right performance for any client's need

From patch panels to terminal sockets, cables and cords, LINKEO C offers a complete range of equipment to create high-performance digital infrastructures.

At the heart of the system is the RJ 45 connector, available in all categories, from 5e to 6A, in shielded or unshielded versions. A colour code helps you identify them at a glance. ■

Cat. 6A STP/UTP	10 Gbits/s	Anthracite grey locking tab
Cat. 6 STP/UTP/FTP	1 Gbit/s	Light grey locking tab
Cat. 5e STP/UTP	1 Gbit/s	White locker locking tab



100% RECYCLED



## Reduce waste, save time

Legrand has been committed to preserving the environment for long time. To intensify its efforts to reduce its carbon footprint, **the group is using 100% recycled cardboard packaging and is gradually eliminating plastic packaging from its products.**

That's why all LINKEO C products are delivered in 100% recycled cardboard packaging, without plastic film and ready to use. **This means you don't waste time unpacking the equipment and you reduce your on-site waste.** ■

To know more about this point, watch the tutorial: Packaging presentation



# A super-efficient and caring system

*Our designers paid particular attention to the ergonomics of the new LINKEO C range. They focused on minimizing any discomfort or inconvenience associated with the repetitive handling of connectors and panels. And they simplified the execution of installation and maintenance operations. It's time to embrace a new ergonomic design that improves your comfort and your performance at work. ■*

## Pre-position panels for a quick look

LINKEO C's designers listened to your needs and created a system that meets your on-site requirements. They've optimized steps, simply and efficiently.

For example, you're able to pre-position any LINKEO C patch panels in the uprights to get a global overview of your installation. See a way to simplify your installation? Do it quickly and easily. No need to unscrew panels or disconnect any cords or cables. These little things save you time. ■



## Pre-hold panels without fixing them

Designed to speed up your work, the LINKEO C patch panel facilitates installation and maintenance. Simply insert it into the uprights of the cabinet without screwing it in. It holds in place. You can now easily carry out all your operations. Screw each panel in place once everything is properly connected. ■

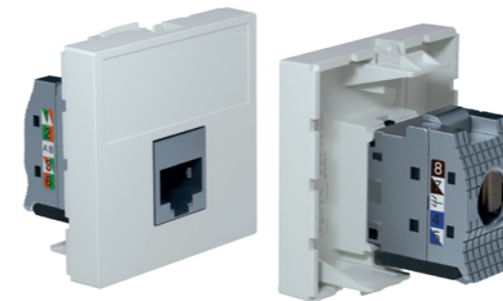


## Easy cable management

LINKEO C patch panel comes with a rear cable management system as standard that lets you simply organize cables, providing a neat and clean installation.

On the back of the panel for example, several cable guides keep cables organized and properly routed through the cabinet. A practical solution that facilitates maintenance routines and limits inadvertent disconnects. ■

## Ensuring end-to-end connectivity



Data socket adaptor for single Keystone connector ; white, 2 modules, marking area for an easy identification of the computer network. You can install it for snap-on trunking and column offers, desktop and under-desk multi-outlet ranges, floor, flush and surface mounting boxes. ■

## Install for the long run

Confident in the quality of our solutions, Legrand guarantees the performance of our copper and fiber cabling systems for 25 years.

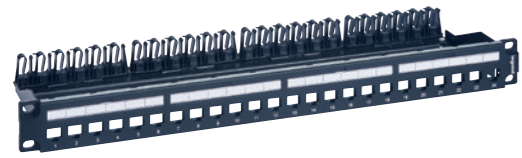
Subject to certain conditions, the "25-YEAR PERFORMANCE WARRANTY" provides assurance of correct functioning of the LEGRAND STRUCTURED CABLING SOLUTIONS for a period of twenty-five years. ■



To know more watch the tutorial: Patch panel presentation

## LINKEO C - structured cabling solutions

patch panels, keystone, surface mounting box and socket outlets



6 328 50



6 329 05



6 329 07



6 329 11



6 327 95



6 327 79



6 329 01

Pack	Cat.Nos	Patch panel to be equipped
1	6 328 50	Empty patch panel for 24 keystone connectors cat. 6A, cat. 6 or cat. 5e with metal cable holder To be equipped with RJ 45 connectors

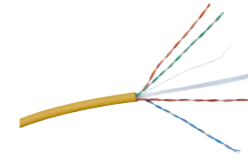
**Keystone connectors**  
Set of 24 RJ 45 connectors  
Keystone toolless RJ 45 connector  
Accepts from AWG 23 to AWG 26 solid and stranded conductors  
Contacts marked with dual colour code for wiring schemes T 568 A and T 568 B  
Conforms to standards  
ISO/IEC 11801 series  
ANSI/TIA 568 series  
EN 50173 series

Pack	Cat.Nos	Keystone connectors
24	6 329 05	STP
24	6 329 06	UTP
24	6 329 07	STP
24	6 329 08	FTP
24	6 329 09	UTP
24	6 329 10	STP
24	6 329 11	UTP

Pack	Cat.Nos	Keystone faceplates
14	6 327 94	<b>RJ 45 Linkeo faceplates</b> 1 port
14	6 327 95	2 ports
14	6 329 00	4 ports
14	6 327 96	<b>Angled RJ 45 Linkeo faceplates</b> 1 port
14	6 327 97	2 ports
1	6 327 79	<b>Surface mounting box</b> For keystone connectors Provides solution for integration of keystone in surface mounting installations
10	6 329 01	<b>Socket outlet adaptors + RJ 45 connectors</b> Set of 10 outlets (45 x 45 mm 2 modules, 1 port) and 10 RJ 45 connectors With RJ 45 cat. 6A STP
10	6 329 02	With RJ 45 cat. 6 FTP
10	6 329 03	With RJ 45 cat. 6 UTP
10	6 329 04	With RJ 45 cat. 5e UTP
1	0 335 79	<b>Patch panel telephone 50 ports 110 connect</b> High density: supports 50 ports using 1 U of rack space Compatible with 22-26 AWG 19" panel - 1 U

## LINKEO C - structured cabling solutions

cables and patch cords



6 327 45



6 328 87

Pack	Cat.Nos	Cables
500'	PVC - 6 327 45	Cables with 4 pairs <b>U/FTP cat. 6A</b> Length 500 m
500'	6 327 46 -	<b>F/UTP cat. 6A</b> Length 500 m
500'	- 6 327 47	<b>U/UTP cat. 6A</b> Length 500 m
305'	6 327 24 6 327 25	<b>U/UTP cat. 6</b> Length 305 m
305'	6 327 26 6 327 27	<b>F/UTP cat. 6</b> Length 305 m
305'	6 327 15 6 327 16	<b>U/UTP cat. 5e</b> Length 305 m
305'	6 327 17 6 327 18	<b>F/UTP cat. 5e</b> Length 305 m

1: in meter(s)

Pack	Cat.Nos	Patch cords
1	6 328 78	RJ 45 - RJ 45 PVC <b>U/UTP cat. 6A unshielded impedance 100Ω</b> Sun yellow Length 1 m
1	6 328 79	Length 2 m
1	6 328 80	Length 3 m
1	6 328 81	Length 5 m
1	6 328 86	<b>F/UTP cat. 6A shielded impedance 100Ω</b> Sun yellow Length 1 m
1	6 328 87	Length 2 m
1	6 328 88	Length 3 m
1	6 328 89	Length 5 m
1	6 328 64	<b>U/UTP cat. 6 unshielded impedance 100Ω</b> Light blue Length 1 m
1	6 328 65	Length 1,5 m
1	6 328 66	Length 2 m
1	6 328 67	Length 3 m
1	6 328 68	Length 5 m
1	6 328 74	<b>F/UTP cat. 6 shielded impedance 100Ω</b> Light blue Length 1 m
1	6 328 75	Length 2 m
1	6 328 76	Length 3 m
1	6 328 77	Length 5 m
1	6 327 65	<b>U/UTP cat. 5e unshielded impedance 100Ω</b> Light pink Length 1 m
1	6 327 66	Length 1,5 m
1	6 327 67	Length 2 m
1	6 327 68	Length 3 m
1	6 327 69	Length 5 m
1	6 328 60	<b>F/UTP cat. 5e shielded impedance 100Ω</b> Light brown Length 1 m
1	6 328 61	Length 2 m
1	6 328 62	Length 3 m
1	6 328 63	Length 5 m







- @ legrandgroup.com
- youtube.com/user/legrand
- facebook.com/Legrand
- twitter.com/Legrand
- pinterest.com/legrandgroup
- instagram.com/legrandnews

EX221043-1 - September 2021



**Headquarters**

128, avenue de Lattre de Tassigny  
87045 Limoges Cedex  
France  
Tel.: + 33 (0) 5 55 06 87 87  
Fax: + 33 (0) 5 55 06 88 88