

A photograph of a smiling female caregiver in a light blue uniform leaning over a table, interacting with two elderly residents. One resident is looking up at her, and the other is holding a white cup. The scene is set in a bright, modern room with a painting on the wall.

# WIRELESS SOLUTIONS FOR RESIDENCES



CATALOGUE PAGES INSIDE

# WIRELESS TECHNOLOGY

RELIABLE AND SAFE





## TREX

Wireless call system

>page **04**

## D-POS

Wandering alarm system

>page **08**

## WALL

Wall mounted calling devices

>page **12**

## WIRELESS DEVICES

Detectors and others

>page **13**

## CATALOGUE PAGES

References and technical details

>page **14**



# TREX

WIRELESS  
CALL SYSTEM



**TREX** is a wireless system for the management of alarms in care centers.

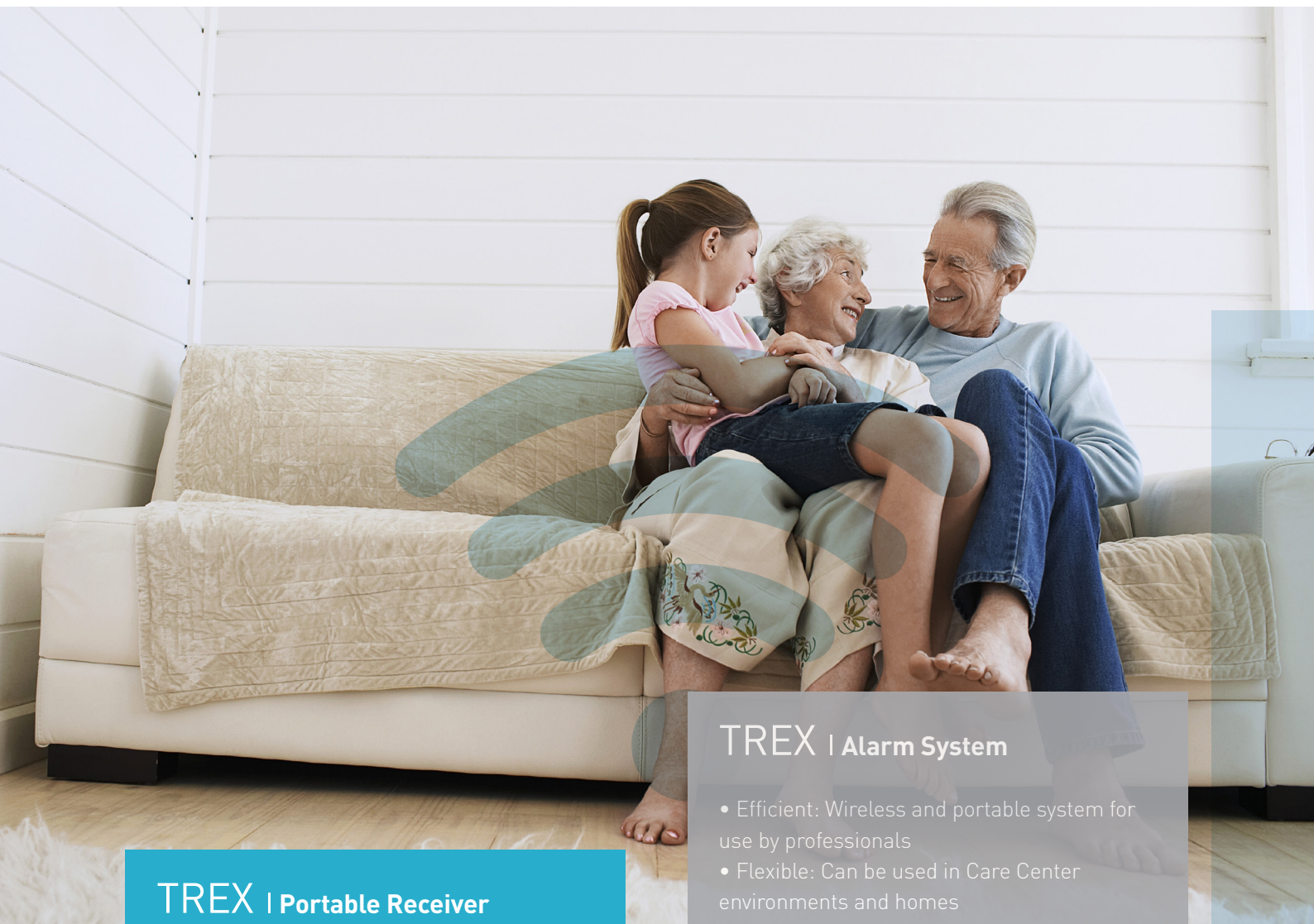
Its wireless technology allows doing installations in reduced time, as wired infrastructures are not needed.

Its unlimited coverage allows professionals free mobility through the center while directly receiving via the **TREX 2G** unit any alarm that could take place.

We can associate the **TREX 2G** unit with different alarms:

- Produced by the user or expert through pulsation.
- Produced automatically by devices (door, smoke, gas ...).
- Produced automatically by the device to report your status (Technical alarms).





## TREX | Portable Receiver

- Portable care call system
- Wireless and therefore easy to install
- Receives up to 255 alarm types
- Bi-directional transmission route
- Saves the last 32 received alarms
- Easy programming for personal attention
- The position can be displayed through the D-POS
- Practical, small format (100 x 48 x 21 mm)

## TREX | Alarm System

- Efficient: Wireless and portable system for use by professionals
- Flexible: Can be used in Care Center environments and homes
- Numerous accessory options

# TREX

THE IDEAL COMPANION  
IN NURSING HOMES



## WALL

Unit located in the headboard of the bed which allows the user to be able to raise an alarm to ask for help.



## REPO

Increases the radio coverage in the center, in a very simple and safe way, getting the alarms to reach the TREX unit.



## SMOKE

Wireless smoke detector which generates a warning in case of smoke or fire.



## ATOM

Wireless Push button that sends the alarm to the call receiver TREX.



## TREX

Mobile unit carried by the professional and in which all calls produced in the center are received. Through the built-in display, the professional can identify the origin of the call.



## D-TECT alarm

Installed at the checkpoint, it allows to visualise the alarms at the time when they happen. Alarms can be analyzed later through its module of reports.





# D-POS

POSITION  
TRANSMITTER



**D-POS** provides residential centres free spaces where the elderly can wander. D-POS technology allows you to configure a determined number of steps, authorizing or denying access to residents in function of their profile.

The resident will wear a bracelet which establishes the access policy (allowing or denying). When the resident accesses a restricted area, the system will trigger an alarm, which will alert the professionals. The system allows you to know which person and what access point is being breached, allowing the professionals to be able to act in a very effective way.



## ANT D-POS | Positioning Antenna

- Adjustable transmission power
- Two antennas for two magnetic fields polarized differently
- 125 kHz with high transmission power

## D-POS | Control Unit

- Can be configured in up to 16 zones
- Up to 255 different door handles
- Motion test function
- The synchronization of two D-POS is possible
- Configuration via PC or NPU

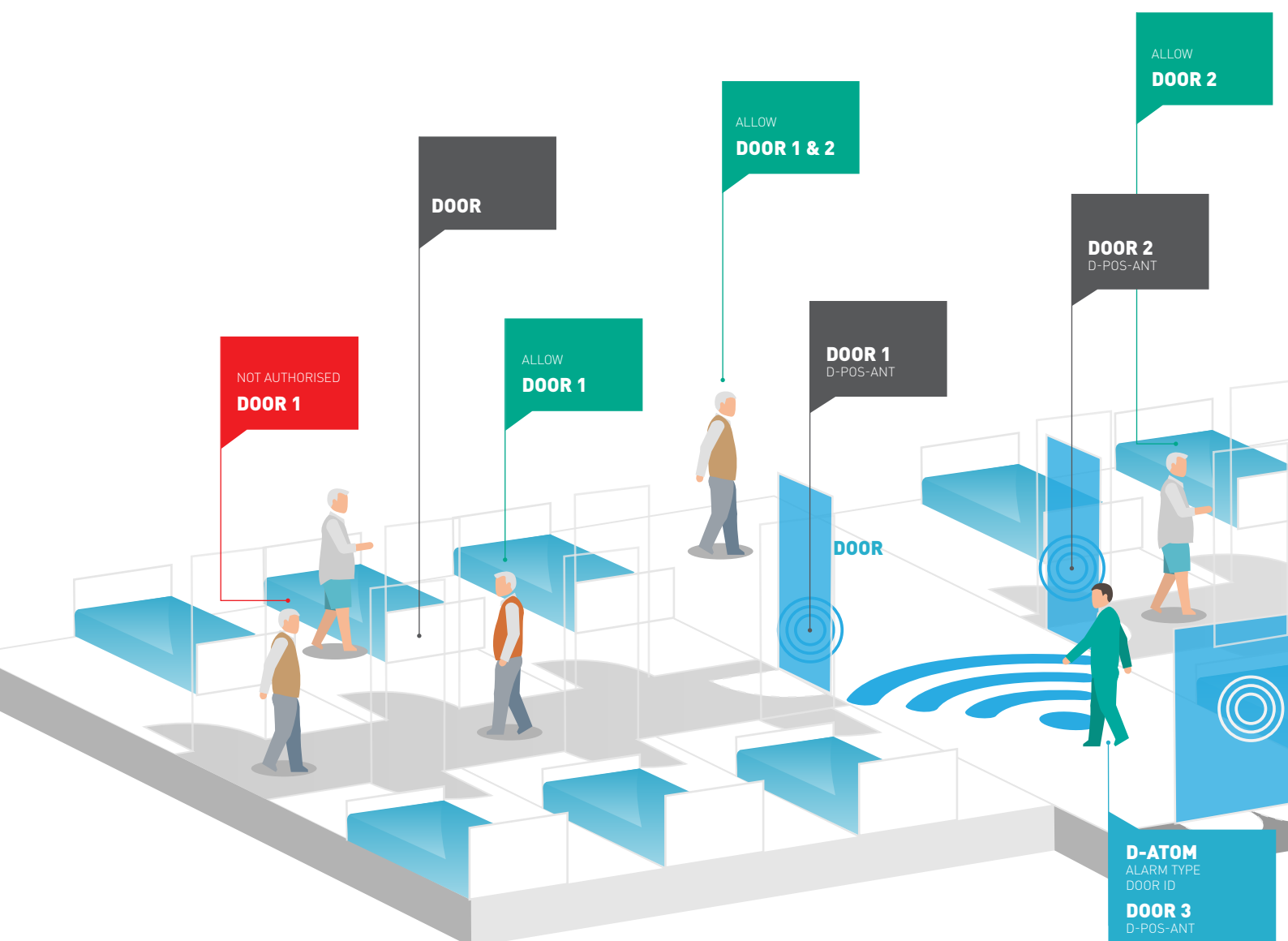
## TREX | Alarm System

- Reliability: For the care of people with dementia
- Flexible: Easy to update
- Scalable: you can add devices such as TREX, DOOR or D-ATOM

# D-POS

## FREEDOM OF MOVEMENT

Application example: The system records when a patient is approaching any door. D-ATOM issues an alarm signal with identification to TREX.







## D-POS Unit + Antenna

RFID pass-through unit for the creation of magnetic fields of low intensity.



## TREX

Central unit where all the calls produce in the centre are received. Through the built-in display, the professional will identify the origin of it, and can identify the access and the person who activating it.



## UDAT Wandering Bracelet - Mentally Ill

Designed for people with mental disorders. It cannot be taken off without help from a caregiver, thanks to their security systems. The unit will alert when the person accesses a path previously restricted by configuration. It is totally waterproof



## D-ATOM Wandering Bracelet - Elderly

This unit bracelet type carried by the user will alert the caregivers when the person accesses a preconfigured restricted area. It is totally waterproof.

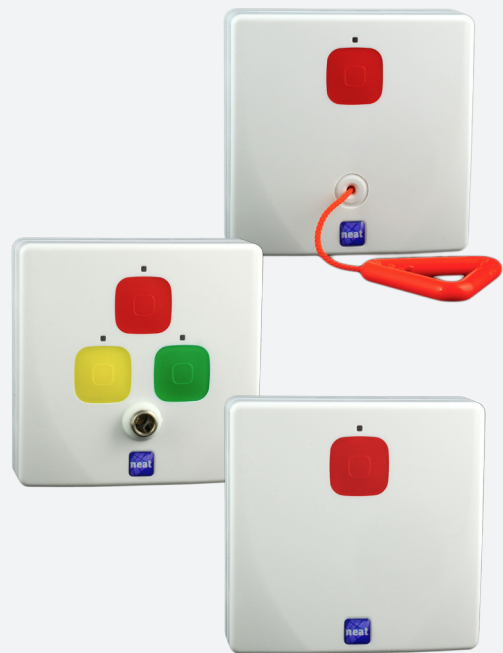
DOOR

NOT AUTHORISED  
DOOR 2

# WALL

## PHONE

### DEVICES



The **WALL** products are designed to be used in nursing homes or outpatient care. It communicates with others elements of the system by radio waves (Social alarms frequency). The devices can be powered through the mains electrical network or with a lithium battery. When an alarm occurs in a room, the unit sends a radio signal to the system. The device is equipped with a LED that will light green when the alarm is received and the acknowledgment of the signal has occurred.

# WIRELESS TECHNOLOGY

AS EXTENSIVE  
AS YOUR NEEDS

Safe, reliable and simple to use.

The devices are very accessible, with customized configuration, they are easy to install and ready for immediate use (plug & play).

The result is a complete system that is ready to operate and be used without problems.





## WIRELESS CALL SYSTEM



NT-112549



NT-111147



NT-112515

Wireless call and monitoring system specifically designed for internal communication in public and private care centres. The system operates on the frequency of social alarm European 869.2 MHz.

Qty.	Ref.	TREX System
1	NT-112549	TREX 2G, signal receiving device, wireless and portable. Capacity of up to 255 channels. Bi-directional transmitter. Memorize the last 32 received alarms. Reception of alarms guaranteed thanks to its LCD screen display and vibration. Can display last position along with D-POS Day and hour Li-Po battery, rechargeable 600 mAh Dimensions: 100 x 48 x 21 mm Weight: 60 g Frequencies: 869.2 MHz (social alarm), 868.7 MHz or 869.4 MHz
1	NT-112262	Cradle Type Charging Cradle for TREX 2G Robust material Supplied with power adapter and Mini-usb Adapter
1	NT-112265	TREX 2G Charger and Forceps adapter For connection to software and battery charge

Qty.	Ref.	Push Button Device
1	NT-111147	ATOM, wireless button Portable unit that sends alarms to receivers Called TREX 2G 2-LED optical call confirmation Bi-directional connection Bracelet or necklace Long battery life Dimensions: 35 x 44 x 11 mm Weight: 13.2 g IP67

Qty.	Ref.	Signal Boosters
1	NT-112515	REPO, radio booster When it receives a signal, it amplifies and retransmits it Reach 400 m in open field Up to 8 different channels Possibility of receiving all the calls that are produced in the installation or only those of pre-programmed transmitters 230 V power supply. Can operate on batteries in case power failure Manual or PC programming Dimensions: 89 x 63 x 28 mm
1	NT-112516	REPO +, long range dual radio booster Scope 2.5 km in open country Repeat the signal using the frequency 869.2 MHz 230 V power supply. Can operate on batteries in case power failure Manual or PC programming Dimensions: 111 x 63 x 28 mm

TREX 2G can associate different alarms caused by the user or professional, produced automatically by devices (door, bed, smoke, gas), or produced automatically by the device to inform your state (technical alarms) allowing you to know the status of the unit.

## D-POS

### WANDERING ALARM SYSTEMS



NT-112132



NT-112133



NT-112134

D-POS is a surveillance system oriented towards people with dementia. When a person wears a bracelet (D-ATOM or UDAT) and enters an unauthorised field, a signal is generated and is sent to an alarm receiver.

Qty.	Ref.	Control Unit
1	NT-112132	D-POS control unit Door Device Control Unit for people with dementia Can manage up to 16 zones and 255 gate IDs Motion test function Possibility to synchronize 2 D-POST Configuration via PC using NPU device (Not supplied) or by micro switch. Power supply: 230 V
1	NT-112133	D-POST antenna Antenna for step control Adjustable transmission power Includes 2 antennas for 2 magnetic fields polarized differently Frequency: 125 kHz with high transmission power

Qty.	Ref.	Mobile Devices
1	NT-112134	D-ATOM bracelet device RFID Bracelet suitable for people with dementia .Operates as a transmitter for the D-POS system (For locating people with dementia) and as a transmitter / receiver signalling system TRES 2G Comfortable Indication of call sending by LED Configuration via PC using the NPU device (Not supplied) Dimensions: 44 x 35 x 11 mm IP67 Bracelet and fastener not supplied
1	NT-112172	UDAT high strength bracelet device High resistance brace suitable for people with dementia. Operates as a transmitter for the D-POS system (To locating people with dementia) IP67 Bracelet and fastener not supplied
1	NT-112180	D-ATOM / UDAT reinforced bracelet
1	NT-112181	Magnetic fastener for D-ATOM / UDAT
1	NT-112182	D-ATOM / UDAT magnetic fastener uncoupler

Qty.	Ref.	Power Supplies
1	NT-112263	AC / DC 12 V, 1.5 A power supply for D-POS system

#### Functionality and security

Radio alarm notification  
Configurable alarm type  
Monitoring battery status  
LED indicator

#### Configuration and installation

Manually by jumper or by means of the NPU programmer (not supplied)  
Installation recessed in universal box or surface by specific box

#### Specifications

2 entries cable / 2 relay outputs  
Radio frequency: 868.7, 869.2 or 869.4 MHz  
Power to 24 V DC or batteries  
Power supply: 10-28 V (30 V max.)  
Batteries: 2 x AAA  
Dimensions: 85 x 85 x 30 mm

## WALL

### WALL MOUNTED CALLING DEVICES



NT-112565



NT-112563

WALL products are designed for use in nursing homes or outpatient care areas. Communicate with other devices via radio or via cable. They receive and carry out actions, either through sending radio messages or operating on an electric relay.

Qty.	Ref.	Room Devices
1	NT-112562	PEAR, call pear With 6.35 mm tele-jack connector
1	NT-112564	PUSH + PEAR, call pear + call button With 6.35 mm tele-jack connector
1	NT-112565	3 PUSH + PEAR, call pear + 3 call buttons Multifunction With 6.35 mm tele-jack connector

Qty.	Ref.	Bathroom Devices
1	NT-112563	PULL, bath handle Equipped with a 2.5 m cable
1	NT-112566	PUSH + PULL, bath handle + call button Equipped with a 2.5 m cable

Qty.	Ref.	Call buttons
1	NT-112568	Jack Push button for single room (1 bed) Equipped with a 1.5 m cable
1	NT-112569	Jack Push button for double room (2 beds) Equipped with a 2 m cable

Qty.	Ref.	Accessories
1	NT-112567	Surface box for installation devices for wall phone Thickness: 13 mm

#### Functionality and Security

Radio alarm notification  
Configurable alarm type  
Monitoring battery status  
LED indicator

#### Configuration and Installation

Manually by jumper or by means of the NPU programmer (not supplied)  
Installation recessed in universal box or by surface specific box

#### Specifications

2 cable entries / 2 relay outputs  
Radio frequency: 868.7, 869.2 or 869.4 MHz  
Power to 24 V DC or batteries  
Power supply: 10-28 V (30 V max.)  
Batteries: 2 x AAA  
Dimensions: 85 x 85 x 30 mm



## Detectors

### WIRELESS DETECTORS



NT-111284



NT-111283

Qty.	Ref.	Detectors
1	NT-111282	FALL, drop detector type bracelet It detects a possible fall of a user and automatically launches an alarm
1	NT-112390	DOOR, opening detector. Wireless device that generates an alarm by radio when a controlled door opens. Allows you to configure downtime and alarm cancellation Incorporates LED with battery status Manual or PC programming Dimensions: 34 x 85 x 24 mm
1	NT-111284	SMOKE, smoke detector. Wireless device that generates a warning in case of fire or intense smoke. If the device detects smoke, an optical and acoustic signal will be activated. The alarm can also be transmitted to others offered devices like TREX 2G. Works within the European frequency for social alarms. Built-in lithium battery with an estimated duration of 2 to 3 years.
1	NT-111283	PIR, motion detector A wireless device that detects the presence of people and records their movements. First register the inactivity of the person and sends a passive alarm by radio to the TREX 2G device. Can be installed next to a bed, when the user leaves the bed an alarm is transmitted

# Installation Elements

## SOFTWARE, RADIO CONVERTER, PROGRAMMER



NT-112517

Qty.	Ref.	Software
1	NT-111458	D-TECT Alarm, time control software Software license for location management, devices and users. Allows the visualization of active alarms, alarm history users and care time analysis.

Qty.	Ref.	Programmer
1	NT-111227	1/TN-111227 NPU, computer programmer Kit composed of PC connection interface through USB and SW dedicated to the programming of the TREX 2G, D-POS, WALL, ATOM and IOR devices Connection to PC with Windows operating system

Qty.	Ref.	Radio Converter
1	NT-112517	IOR, converter of sound or light signals in wireless signals It has 5 inputs free of potential and 1 output If a cable entry is activated, IOR sends a message to TREX Manual or PC programming 230 V power supply Dimensions: 89 x 63 x 28 mm

Qty.	Ref.	Chargers or Power Supplies
1	NT-111337	AC / DC 12 V, 1.5 A power supply for devices
1	NT-112263	12V, 1.5A AC / DC power supply for D-POS
1	NT-111338	AC power supply, 7.5 V for REPO +

notas

For more information contact:

Legrand South Africa  
21 Spartan Crescent  
Eastgate Ext 3, Sandton  
2054

Tel: +27 11 444 7971  
E-Mail: [legrand.south-africa@legrand.co.za](mailto:legrand.south-africa@legrand.co.za)  
URL: [www.legrand.co.za](http://www.legrand.co.za)