

A woman in a green dress is sitting on a white chair, smiling. The scene is overlaid with a circular, glowing digital effect that resembles a data visualization or a futuristic interface. The background is dark with some faint, glowing lines and patterns.

Vantage Comfort

Advanced Comfort Features For Today's Digital Lifestyle

comfort solution } overview

A Vantage system gives you unparalleled control of comfort throughout your home. Whether it's an evening cocktail party for 50 of your closest friends or a quiet night at home by yourself, Vantage control systems make maintaining comfort simple and convenient. Change the temperature setting, check current weather conditions, or raise and lower window treatments all from the convenience of your Equinox keypad, touchscreen, or mobile app.

InFusion Comfort Solution

FL-TEMP, CC-STAT, FLUSH SENSOR,
EQ73TB-TI-II

The cornerstones of Vantage's InFusion comfort system are the Vantage Communicating Thermostat and Remote Temperature Sensor.

The Vantage Temperature Sensor - Flushmount is a Temperature sensor that reports the room temperature. It is an ideal solution for measuring the temperature accurately and independently.

Temperature can be controlled by Equinox user interfaces or Mobile Application.

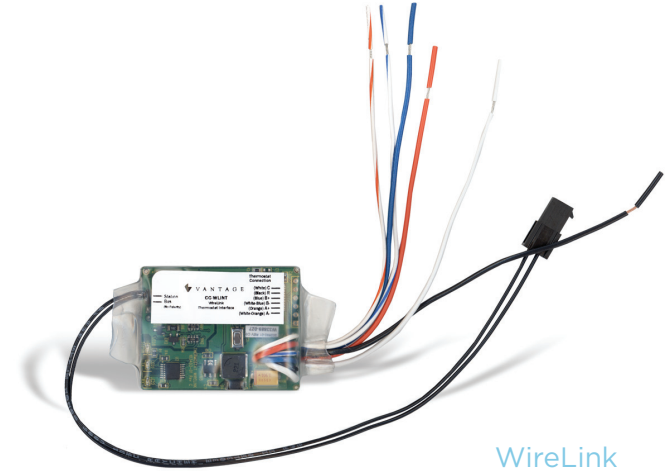




comfort *core products*

Most people leave the house at one temperature and forget to change it, but with Equinox devices, temperature set points can be scheduled and controlled. Schedule it well and Equinox can lower your heating and cooling bills up to 20%. Set or modify schedules from Equinox touchscreens or apps.

Featuring thermostats, humidistats, temperature sensors, and more, the InFusion comfort system from Vantage helps you enjoy the comfort of your home, simply.



WireLink
Thermostat Interface
CC-WLINT

The WireLink Thermostat Interface provides bi-directional communication between the Vantage InFusion system and the CC-STAT connected to the HVAC system.

Communicating Programmable Thermostat CC-STAT

The Vantage Communicating Thermostat provides comfort and energy efficiency along with easy installation and full InFusion integration. This multi-function thermostat is compatible with most residential HVAC systems, including single stage, heat pump, and multi-stage.

This thermostat can also be adapted in the field to work with and control humidifier and dehumidifier systems.

comfort system *interfaces*

Support HVAC control and feedback from Vantage thermostats or supported partners

Graphic represents current mode (red-heating, blue-cooling, off, etc.)

Current temperature

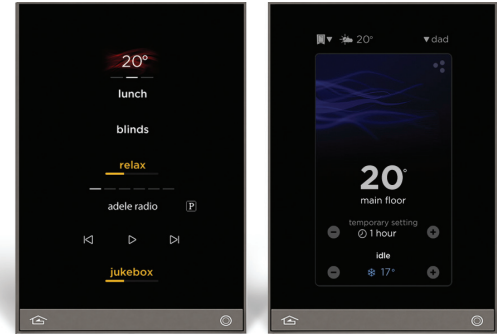
See the current humidity in a zone, if set up



"Press" the discovery dots for more information about climate in the 2nd or full screen level

Temporarily override target temperature, choose amount of time to override (only for schedule mode)

Current target temperature



Equinox 40 and 41 Digital Keypads
EQ40TB-TI-II and EQ41TB-TI

The Equinox 40 keypad and 41 touchscreen are sleek, wall-mounted interfaces for the InFusion comfort system. They feature full-color capacitive touchscreens and climate dashboards for quickly accessing comfort controls. Easily control thermostats or humidistats in the room, in the home, or both.



Equinox 73 Touchscreen
EQ73TB-TI-II

The Equinox 73 touchscreen is a beautiful, wall-mounted interface for the InFusion climate control system. Personalize and edit climate schedules your way; customize your climate experience by making changes to existing thermostat schedules or adding new ones, right from your touchscreen app.

Widgets

Widgets for Equinox are designed to work specifically with the Vantage climate control system, so using these core products will guarantee the best possible comfort experience.

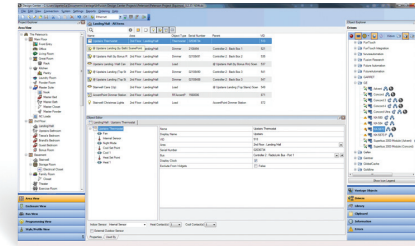
comfort..... *extra features*



Thermostat Schedules

The climate widget gives visibility into the home's thermostat temperature schedules through the rich user interface without over complicating things. It's "always on" and will grow and adapt with you.

-  MORNING
-  DAYTIME
-  EVENING
-  NIGHT



Easy Setup

Through InFusion Design Center software, thermostats, sensors, and widgets come together quickly; no additional programming needed.



Expansion

Thanks to the flexibility of the InFusion system bus architecture—which allows for multiple wired stations—the comfort system can be expanded to include dozens of thermostats for a variety of HVAC systems, if necessary.

specifications



Vantage Communicating Thermostat

CC-STAT

Compatible Systems

Standard Gas, Oil, Electric
Single Stage/Heat Pump/Multi-Stage

Temperature Ranges

Control • 45° to 99°F (7° to 32°C)
Display • 32° to 99°F (0° to 40°C)
Accuracy • ± 1°F (± .5°C)

Power

Power Draw Maximum • 86.4 mA rms
(With 24 VAC Input Voltage and Backlight ON)
Power Draw Typical • 21.6 mA rms
(With 24 VAC Input Voltage and Backlight OFF)
Power Input • 18-30 VAC (24VAC Nominal) 50/60Hz
(not included)

Voltage

DC Power • 3.0 Volts DC
(2 "AA" Alkaline Batteries Included)

Maximum Loads

Per Terminal • 1 Amp
All Terminals • 2.5 Amp

Miscellaneous

Weight • 15 oz (.425 kg)

Operating Ranges

Operating Humidity • 5% to 90% Relative Humidity
Operating Ambient Temperature • 32° to 120°F (0° to 48.9°C)
Typical Control Accuracy • ± 1°F at 68°F / ± 0.5°C at 20°C

Dimensions, HWD

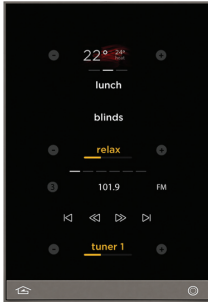
4.9375" x 6" x 1.3125"
125.4mm x 98.4mm x 49.2mm

System Requirements

Each Vantage thermostat requires a thermostat interface (CC-WLINT), connected over Station Bus.
Also, each Vantage thermostat requires a 24VAC power supply (DIN-POWER-STAT-II)

Equinox 40 Digital Keypad

EQ40TB-TI-II



Display

4.3" Diagonal
Active Matrix Color LCD

Features

Up to 3 Swipable Pages
Single Layer Mini-Widget UI

Controls

Hard Buttons • 2 (1 Home, 1 Programmable)
Header Mini-Widget (Climate, Clock, Weather, None)
Scenes Mini-Widget
Audio Mini-Widget

Sensors

Proximity
Light (for Screen Brightness)

Connections

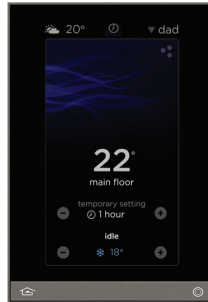
Station Bus • 1
Auxiliary • 1

Wall Dimensions

3.54"W x 4.72"H
90mm W x 120mm H
0.45"/ 11mm Off-Wall

Equinox 41 Digital Keypad

EQ41TB-TI



climate widget shown above

Display

4.3" Diagonal
Active Matrix Color LCD

Features

Single Widget UI

Controls

Hard Buttons • 2 (1 Home, 1 Programmable)
Full Widgets:
Audio, Climate, Scenes, Lighting, Weather,
Video, Cameras, Security, Theater,
Pool/Spa, Shades, Timers

Sensors

Proximity
Light (for Screen Brightness)

Connections

RJ45 (PoE) • 1

Wall Dimensions

3.54"W x 4.72"H
90mm W x 120mm H
0.45"/ 11mm Off-Wall

Equinox 73 Touchscreen

EQ73TB-TI-II



climate full screen shown above

Display

- 7.1" Diagonal
- Active Matrix Color LCD

Features

- Triple Widget UI
- Live Dashboard
- Three Layer
- Profiles for Users, Spaces, Functions and Time
- Personalizable UI for Each User

Controls

- Hard Buttons • 2 (1 Home, 1 Programmable)
- Full Widgets:
 - Audio, Climate, Scenes, Lighting, Weather,
 - Video, Cameras, Security, Theater,
 - Pool/Spa, Shades, Timers

Sensors

- Light (for Screen Brightness)

Connections

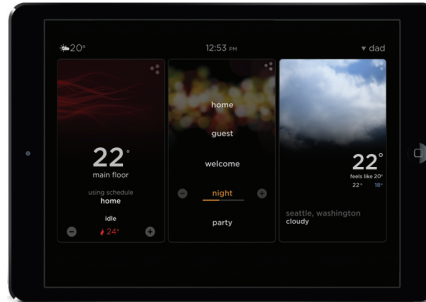
- RJ45 (PoE) • 1

Wall Dimensions

- 8.54"W x 4.72"H
- 217mm W x 120mm H
- 0.45"/ 11mm Off-Wall

Equinox App - Tablet

EQ-APP-5, EQ-APP-10, EQ-APP-X



dashboard shown above

Compatibility

- Apple, Android

Features

- Triple Widget UI
- Live Dashboard
- Three Layer
- Profiles for Users, Spaces, Functions and Time
- Personalizable UI for Each User

Controls

- Full Widgets:
 - Audio, Climate, Scenes, Lighting, Weather,
 - Video, Cameras, Security, Theater,
 - Pool/Spa, Shades, Timers

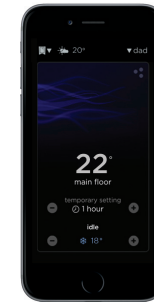
Licensing

- Device License:** A device license allows a single device to be connected to a Vantage system
- Multi-License:** A multi-license enables any number of supported devices to function as an interface when they are connected to a single InFusion system



Equinox App - Phone

EQ-APP-5, EQ-APP-10, EQ-APP-X



weather widget shown above



Compatibility

- Apple, Android

Features

- Single Widget UI
- Live Dashboard
- Three Layer
- Profiles for Users, Spaces, Functions and Time
- Personalizable UI for Each User

Controls

- Full Widgets:
 - Audio, Climate, Scenes, Lighting, Weather,
 - Video, Cameras, Security, Theater,
 - Pool/Spa, Shades, Timers

Licensing

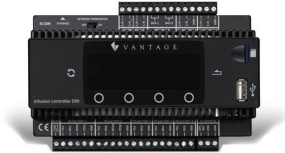
- Device License:** A device license allows a single device to be connected to a Vantage system
- Multi-License:** A multi-license enables any number of supported devices to function as an interface when they are connected to a single InFusion system



related products

In addition to the core products featured on page three, a complete Vantage comfort solution will also contain the products listed below.

InFusion Controller
IC-DIN-II



Universal Interface Point
HVAC-IU



Flush Temperature
Sensor
FLUSHSENSOR



Temperature
Sensor
FL-TEMP







Legrand Integrated Solutions nv/sa
Binnendijk 40, 9130 Beveren
Belgium
T : +32 (0)3 773 31 06
www.legrandintegratedsolutions.com



1061 South 800 East
Orem, Utah 84097
800.555.9891
801.229.2800
801.224.0355 fax

www.vantagecontrols.com

©2018 by Vantage. All Rights Reserved.
M-B-AUDIO