



VANTAGE



Vantage Comfort

Advanced Comfort Features For Today's Digital Lifestyle

comfort solution overview

A Vantage system gives you unparalleled control of comfort systems throughout your home. Whether it's an evening cocktail party for 50 of your closest friends or a quiet night at home by yourself, Vantage control systems make maintaining comfort simple and convenient. Change the temperature setting, check current weather conditions or raise and lower window treatments all from the convenience of your Equinox keypad, touchscreen or mobile app.

InFusion Comfort Solution EQ73TB-TI, CC-STAT, FLUSH SENSOR

The cornerstones of Vantage's InFusion comfort system are the Vantage Communicating Thermostat and Remote Temperature Sensor.





comfort system core products

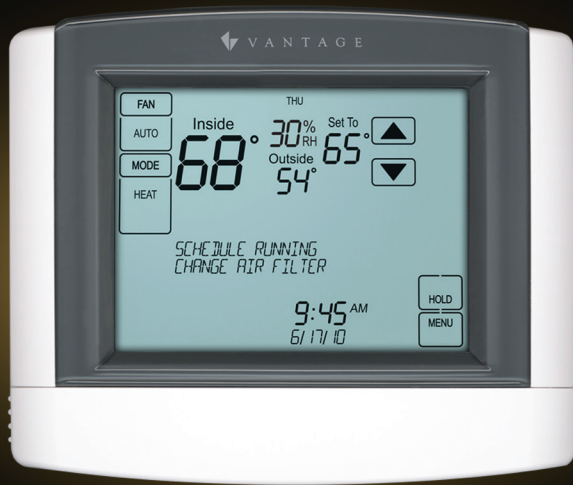
Most people leave the house at one temperature and forget to change it but with Equinox devices, temperature set points can be scheduled and controlled. Schedule it well and Equinox can lower your heating and cooling bills up to 20%. Set or modify schedules from Equinox touchscreens or apps.

Featuring thermostats, humidistats, temperature sensors and more, the InFusion comfort system from Vantage helps you enjoy the comfort of your home, simply.



WireLink Thermostat Interface
CC-WLINT

The WireLink Thermostat Interface provides bi-directional communication between the Vantage InFusion system and the CC-STAT connected to the HVAC system.



Communicating Programmable Thermostat
CC-STAT

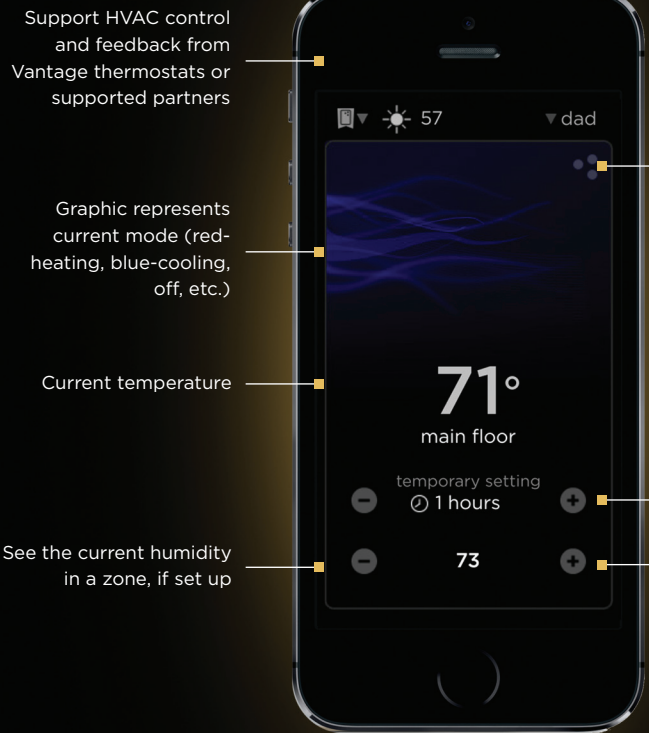
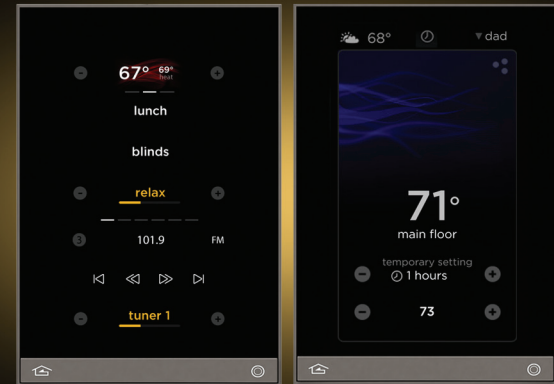
The Vantage Communicating Thermostat provides comfort and energy efficiency along with easy installation and full InFusion integration. This multi-function thermostat is compatible with most residential HVAC systems, including single stage, heat pump and multi-stage.

This thermostat can also be adapted in the field to work with and control humidifier and dehumidifier systems.

comfort system interfaces

Equinox 40 and 41 Digital Keypads EQ40TB-TI and EQ41TB-TI

The Equinox 40 keypad and 41 touchscreen are beautiful wall-mounted interfaces for the InFusion comfort system. They feature full color, capacitive touchscreens and climate dashboards for quickly accessing comfort controls. You can easily control thermostats or humidistats in the room, in the home or both.



Support HVAC control and feedback from Vantage thermostats or supported partners

Graphic represents current mode (red-heating, blue-cooling, off, etc.)

Current temperature

See the current humidity in a zone, if set up

“Press” the discovery dots for more information about climate in the 2nd or full screen level

Temporarily override target temperature, choose amount of time to override (only for schedule mode)

Current target temperature

Equinox 73 Touchscreen EQ73TB-TI

The Equinox 73 touchscreen is a beautiful wall-mounted interface for the InFusion climate control system. Personalize and edit your own climate schedules, your way. Customize your climate experience by making changes to existing thermostat schedules or adding new ones, right from your touchscreen or app.



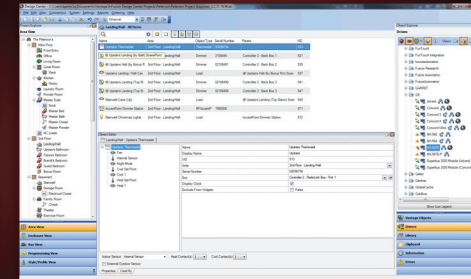
Widgets

Widgets for Equinox are designed to work specifically with the Vantage climate control system, so using these core products will guarantee the best possible comfort experience.

comfort extra features



-  MORNING
-  DAYTIME
-  EVENING
-  NIGHT



Easy Setup

Through InFusion Design Center software, thermostats, sensors and widgets come together quickly. No additional programming needed.

Thermostat Schedules

The Climate Widget gives visibility into the home's thermostat temperature schedules through the rich user interface without over complicating things. It's "always on" and will grow and adapt with you.

Premier Partners

Widgets for Equinox are designed to work specifically with Vantage's own climate control system as well as those from Premier Partners, so choosing these core products will guarantee the best possible experience.*



Expansion

Engineered for expansion. Thanks to the flexibility of the InFusion system bus architecture, which allows for multiple wired and/or wireless stations, the comfort system can be expanded to include dozens of thermostats for a variety of HVAC systems if necessary.

specifications

Vantage Communicating Thermostat CC-STAT



Compatible Systems

Standard Gas, Oil, Electric
Single Stage/Heat Pump/Multi-Stage

Temperature Ranges

Control • 45° to 99°F (7° to 32°C)
Display • 32° to 99°F (0° to 40°C)
Accuracy • ± 1°F (± .5°C)

Power

Power Draw Maximum • 86.4 mA rms
(With 24 VAC Input Voltage and Backlight ON)
Power Draw Typical • 21.6 mA rms
(With 24 VAC Input Voltage and Backlight OFF)
Power Input • 18-30 VAC (24VAC Nominal) 50/60Hz

Voltage

DC Power • 3.0 Volts DC
(2 "AA" Alkaline Batteries Included)

Maximum Loads

Per Terminal • 1 Amp
All Terminals • 2.5 Amp

Miscellaneous

Weight • 15 oz (.425 kg)

Operating Ranges

Operating Humidity • 5% to 90% Relative Humidity
Operating Ambient Temperature • 32° to 120°F (0° to 48.9°C)
Typical Control Accuracy • ± 1°F at 68°F / ± 0.5°C at 20°C

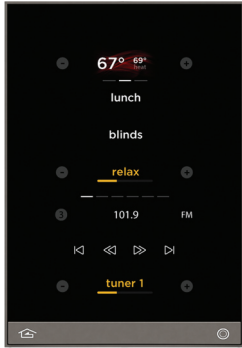
Dimensions, HWD

4.9375" x 6" x 1.3125"
125.4mm x 98.4mm x 49.2mm

System Requirements

Each Vantage thermostat requires a thermostat interface, RadioLink or WireLink, connected over Station Bus or RadioLink

Equinox 40 Digital Keypad
EQ40TB-TI



Display

4.3" Diagonal
Active Matrix Color LCD

Features

Up to 3 Swipable Pages
Single Layer Mini-Widget UI

Controls

Hard Buttons • 2 (1 Home, 1 Programmable)
Header Mini-Widget (Climate, Clock, Weather)
Scenes Mini-Widget
Audio Mini-Widget

Sensors

Proximity
Light (for Screen Brightness)

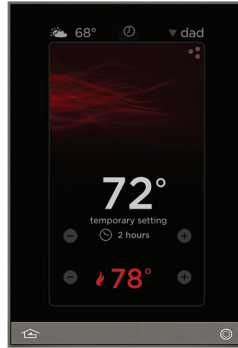
Connections

Station Bus • 1
Auxiliary • 1

Wall Dimensions

3.54"W x 4.72"H
0.45" Off-Wall

Equinox 41 Digital Keypad
EQ41TB-TI



climate widget shown above

Display

4.3" Diagonal
Active Matrix Color LCD

Features

Single Layer Widget UI

Controls

Hard Buttons • 2 (1 Home, 1 Programmable)
Full Mini-Widgets:
Audio, Climate, Scenes, Weather, Video,
Cameras, Security, Energy, Theater

Sensors

Proximity
Light (for Screen Brightness)

Connections

RJ45 (PoE) • 1

Wall Dimensions

3.54"W x 4.72"H
0.45" Off-Wall

Comfort Partners



Comfort Sources

Aprilaire	8870 8800
Bryant	Evolution (SAM)
Carrier	Infinity (SAM)
VRF/VRV	Daikin Fujitsu Hitachi Honeywell LG Mitsubishi Sanyo Toshiba
Tekmar	TN4

Equinox 73 Touchscreen
EQ73TB-TI



climate full screen shown above

Display

7.1" Diagonal
Active Matrix Color LCD

Features

Triple Layer Widget UI
Profiles for Users, Spaces, Functions and Time
Personalizable UI for Each User

Controls

Hard Buttons • 2 (1 Home, 1 Programmable)
Full Mini-Widgets:
Audio, Climate, Scenes, Weather, Video,
Cameras, Security, Energy, Theater

Sensors

Proximity
Light (for Screen Brightness)

Connections

RJ45 (PoE) • 1

Wall Dimensions

8.54"W x 4.72"H
0.45" Off-Wall

Equinox App - iPad
EQ-APP-5, EQ-APP-10, EQ-APP-X



dashboard shown above

Compatibility

Apple, Android

Features

Triple Layer Widget UI
Profiles for Users, Spaces, Functions and Time
Personalizable UI for Each User

Controls

Full Mini-Widgets:
Audio, Climate, Scenes, Weather, Video,
Cameras, Security, Energy, Theater

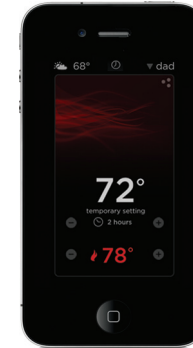
Licensing

Device License: A device license allows a single device to be connected to a Vantage system

Multi-License: A multi-license enables any number of supported devices to function as an interface when they are connected to a single InFusion system



Equinox App - iPhone
EQ-APP-5, EQ-APP-10, EQ-APP-X



climate widget shown above

Compatibility

Apple, Android

Features

Triple Layer Widget UI
Profiles for Users, Spaces, Functions and Time
Personalizable UI for Each User

Controls

Full Mini-Widgets:
Audio, Climate, Scenes, Weather, Video,
Cameras, Security, Energy, Theater

Licensing

Device License: A device license allows a single device to be connected to a Vantage system

Multi-License: A multi-license enables any number of supported devices to function as an interface when they are connected to a single InFusion system



related products

In addition to the core products featured on page three; a complete Vantage comfort solution will also contain the products listed below.

InFusion Controller
IC-36-1



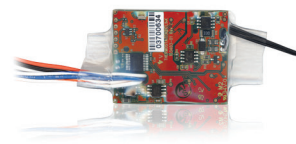
Temperature Support
Module
CC-TEMPSUP



Flush Temperature
Sensor
FLUSHSENSOR



RadioLink Station
Interface
CC-RLINT



Equinox Apps
EQ-APP-5, EQ-APP-10,
EQ-APP-X



Living Perfection  V A N T A G E

1061 South 800 East
Orem, Utah 84097
800.555.9891
801.229.2800
801.224.0355 fax

Vantage EMEA nv/sa
Binnendijk 40
B-9130 Beveren
Belgium
+32 3 773 31 06

www.vantagecontrols.com

©2013 by Vantage. All Rights Reserved.
Part# 130xxxxRev_A DM/DG 10/13