

 VANTAGE™



# Vantage Audio

Advanced Multi-Room Features For Today's Digital Lifestyle

# *multi-room* audio solution

Scroll through your entire music library. View song, artist, and album information from Equinox touchscreens or mobile apps. With more sources, zones, power, control, and features, Vantage's multi-room audio system simplifies the enjoyment of your music.



## The Vantage Audio Solution

850D-DA-II, P3100, P4300, P100, P200, P300, P400, P500

The multi-room audio system offers advanced and stylish features that make enjoying your musical experience even easier. From the 8500-DA-II amplifier and Nuvo 4300 Player series amplifiers/players to the Equinox family of keypads, touchscreens and apps, this system can enhance every room. Your living, working, or playing space will be equipped with an endless variety of your favorite music. Through Equinox, manage and play any source/zone combination.





# audio system *core products*

The Vantage multi-room audio system is easily controlled through Vantage keypads, touchscreens, or apps; each provides the system owner with quick and intuitive access.



## Multi-Room Amplifier

850D-DA-II

The cornerstone of the Vantage multi-room audio system is the 850D-DA-II Amplifier. With eight zones of audio distribution from twelve sources and highly efficient class D digital amplifiers, the 850D-DA-II is the most powerful amplifier from Vantage. For larger installations, an 850 system is scalable up to nine units, providing 72 zones of coverage.



## Nuvo 4300 Player

P4300

The P4300 provides state of the art features for today's digital, multi-room audio systems. The amplifier/player devices are equipped to stream content from network stored audio, analog sources, and several Internet streaming services, including Pandora, SiriusXM, Spotify, Rhapsody, Tune-In, and others. This server blends perfectly with the Vantage audio solution.





# audio system *interfaces*

See live cover art and graphical metadata from Vantage sources or supported partners

View currently playing music information such as song, album, artist, etc. or streaming service information such as a Pandora™ channel

Transport commands for current source

Live graphic animation indicates activity

Turn on/off audio and adjust volume



Zone Power

"Press" the discovery dots for more information about audio in the 2nd or full screen level



## Widgets

Widgets for Equinox are designed to work specifically for use with the Vantage multi-room audio system, so using these core products will guarantee the best possible audio experience.



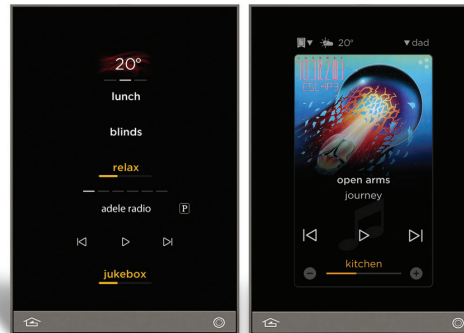
Equinox 73 LCD Touchscreen  
EQ73TB-TI-II

The Equinox 73 touchscreen is a beautiful, wall-mounted interface for the Vantage audio system. It features a full-color, capacitive touchscreen and audio dashboard for quick access music libraries and streaming services.

## Equinox 40 and 41 Digital Keypads

EQ40TB-TI-II and EQ41TB-TI

With Equinox 40 and 41, you can easily control music in the room through the audio mini widget and music for the whole home with scenes. View, play, pause, or skip current song, album, or artist from music servers, tuners, or streaming services. Turn audio on or off or adjust volume, plus much, much more.

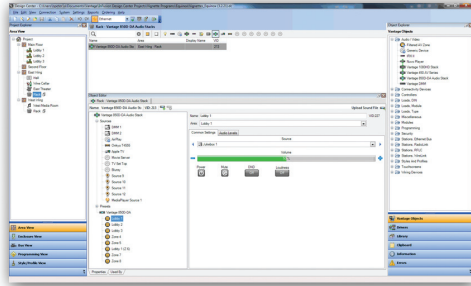


# audio ..... *extra features*



## Expansion

Engineered for expansion, the 850D-DA-II is scalable up to 9 units providing 72 zones of coverage



## Easy Setup

Through InFusion Design Center software, zones, sources, and widgets come together quickly. No additional programming needed.

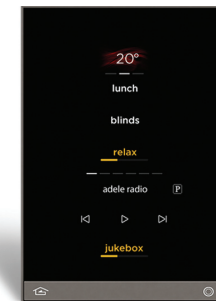
## Premier Partners

Vantage premier drivers are developed to deliver the complete multi-room audio and multi-system control experience based on collaboration with leading custom electronics companies. Available for download and use through Design Center—when used in conjunction with the Equinox family of interfaces—premier partner drivers provide a simplified dashboard and rich media experience for the entire luxury space.

## Streaming Services

Bring an entire world of music to your home through the Nuvo Player Portfolio Streaming services from Pandora, Rhapsody, SiriusXM, iHeart Radio, Spotify, Tunein, and Last.fm. Additionally, enjoy access of iTunes and Windows Media libraries.

When teamed together with Equinox, an endless variety of music options means you are always just a tap or button press away from your favorite selection.



# specifications

## 850D-DA Multi-Room Amplifier

850D-DA-II



### Zones

8 Per Amplifier, 72 Total Per System

### Sources

8 Stereo Audio, 12 Digital Audio

### Interfaces

Equinox 40

Equinox 41

Equinox 73

Standard Keypad (Through Tasks)

LCD Touchscreen on Front

### Zone Controls

Volume

Mute

Power

### Audio Amplifier

Total Sources • 12

Minimum Load Impedance • 4 Ohms

Frequency Response • 20 Hz - 20kHz -3 dB

Total Harmonic Distortion • <0.1% rated power

Signal to Noise Ratio • 100 db (IHA-A, TV Input/Unbalanced)

### Audio Connections

Source Inputs • 8 Analog, 12 Digital, 4 Optical

Source Loop Outputs • 12

Zone Outputs • 6 Speaker Level, 2 Line Level

Paging Input • (1) Mono

Paging Output • (1) Mono

### Connections

Ethernet Bus • 1 Shielded RJ45 Socket - 100BaseT

USB • USB min-B 5 pin

### Power

Voltage • 110 or 240 VAC, 50-60 Hz

Fuse Rating • 100-240V Input; T5.0A 250V US and Canada  
220-240V Input; T3.15A 250V Europe

Consumption • 280 Watts Continuous

Standby Consumption • 2 Watts

### Dimensions, HWD

3.54"H x 17.13"W x 15.3"D

(90mm x 435mm x 390mm)

### Miscellaneous

Weight • 22 lbs (10 kg)



# Nuvo Player Portfolio

P4300



## Input/Output Connectors

Line Input	3.5mm combination analog / TOSLINK
Line Output	3.5mm combination analog / TOSLINK
Trigger Output	12 volt 3.5 mm
Speaker Output	14 ga. four position phoenix connectors
USB Connection	Three, One per zone
Local Area Network (LAN)	RJ45, Cat5 minimum 10/100baseT minimum

## Supported Audio Formats

Music Files (USB or network) • MP3, WMA, AAC, FLAC,  
Ogg Vorbis, WAV  
Internet Radio • Pandora, Sirius/XM, Rhapsody, TuneIn, Deezer,  
iHeart Radio, Napster, Spotify

## Power Requirements

Input Voltage • 100 -240VAC, 50/60Hz  
Power Consumption • 260W  
(Typical - Music) • 50 W

## IP Control

Apple iTouch®, Apple iPhone®, Apple iPad®, Android Mobile,  
Android Tablet

## Network Connectivity

LAN (Wired Connection) • 10/100base-t Ethernet  
Internal Ethernet Switch to 3 Independent Zone Nodes

## Line Output

Output Level • 2 V RMS  
Output Impedance • 470 Ohms

## Line Input

Input Impedance • 20 K Ohms  
Input Overload • 2 V RMS

## Amplifier Output (Typical of 3 Zones)

Rated Output Power (1KHz/1% Distortion)  
4 / 6 / 8 Ohms - 110W per zone  
Distortion • 01 THD+N  
Speaker Impedance • 4 / 6 / 8 Ohms  
Frequency Response (20 - 20kHz) • +/- 1 dB  
Signal-to-Noise Ratio (IHF-A) • 104 dB on speaker output @ 4  
Ohms

## Operating Temperature

0° C - 40° C

## Dimensions, HWD

147 H x 430 W x 258 D

## Miscellaneous

Weight • 2.9 kg

## Regulatory Approvals

Safety • cTUVus, CE-LVD  
EMC • US:FCC CFR Title 47 Part 15, Subpart B;  
CANADA:ICES-003; EUROPE:CISPR13; EUROPE: 55020;  
AUSTRALIA/NEW ZEALAND: C-TICK standard AS/NZS CISPR13  
Environmental Compliance • RoHS

# Nuvo Player Portfolio

P3100



## Input/Output Connectors

Line Input / Output	3 - Dual RCA
Trigger Input / Output	3 - TS 3.5mm Stereo Jack
Speaker Output	3 - (4 Contact) Pluggable
USB 2.0 Connection (Type A)	3
Local Area Network (LAN)	1 - Dual RJ45

## Supported Audio Formats

Music Files (USB or network) • MP3, WMA, AAC, FLAC, Ogg Vorbis, WAV  
Internet Radio • Pandora, Sirius/XM, Deezer, iHeart Radio, Napster Rhapsody, TuneIn, Spotify

## Power Requirements

Input Voltage • 100 -240VAC, 50/60Hz  
Power Consumption • 200W (max), 42W (Typical - 3 Zones, 1/8 Audio Power)

## IP Control

Apple iPhone®, iPod Touch® and iPad®, Android® Mobile, Android Tablet

## Network Connectivity

LAN (Wired Connection) • 10/100base-t Ethernet  
Internal Ethernet Switch to 3 Independent Zone Nodes

## Line Output

Output Level • 0-1000 mV RMS  
Output Impedance • 5 Ohms  
Signal-to-Noise Ratio at Rated Output • 91 dB A - Weighted

## Line Input

Input Impedance • 10 KOhms  
Input Overload • 2.3 V RMS

## Amplifier Output (Typical of 3 Zones)

Rated Output Power (8 Ohm) • 40W (20W x 2)  
Two Channels Driven 20 Hz - 20 KHz @ 0.5% Distortion  
Rated Distortion (1/2 Power) • 0.20%  
Speaker Impedance • 6 - 8 Ohms  
Frequency Response (20 - 20kHz) • +/- 0.5 dB  
Damping Factor • 50+  
Signal-to-Noise Ratio at Rated Output • 92 dB A - Weighted

## Audio Processing

Audyssey Dynamic Volume™, Balance  
Bass Equalization • +/- 12 dB Range  
Trebble Equalization • +/- 12 dB Range

## Operating Temperature

0° C - 40° C

## Dimensions, HWD

2.13"H x 16.93"W x 10.16"D (Including Feet)  
(54mm x 430mm x 258mm)

## Miscellaneous

Weight • 6.45 lbs (2.9 kg)

## Regulatory Approvals

Safety • cTUVus, CE-LVD  
EMC • FCC, IC, CE-EMC, C-Tick  
Environmental Compliance • RoHS

# Nuvo Player Portfolio

P100



## Input/Output Connectors

Line Input	1 - TRS 3.5 mm stereo jack
Line Output	1 - TRS 3.5 mm stereo jack
Speaker Output	4 - Gold 5-way binding post
USB 2.0 Connection (Type A)	1
Local Area Network (LAN)	1 - RJ45

## Supported Audio Formats

Music Files (via USB or network) • MP3, WMA, AAC, Ogg Vorbis, FLAC, WAV  
Internet Radio • Pandora, Sirius/XM, Rhapsody, TuneIn, Deezer, iHeart Radio, Napster, Spotify

## Power Requirements

Input Voltage • 100 - 240VAC, 50/60 Hz  
Power Consumption • (max) 70 W, (typical - 1/8 audio power) 13W

## IP Control

Apple iTouch®, Apple iPhone® and Apple iPad®, Android Mobile, Android Tablet

## Network Connectivity

LAN (Wired Connection) • 10/100base-t Ethernet  
Wireless Connection • MIMO, 2 TX + 2 RX Channels  
IEEE 802.11a/b/g/n

## Line Output:

Output Level	0-1000 mV RMS
Output Impedance	5 Ohms
Signal-to-Noise Ratio at rated output	88 dB A - weighted

## Line Input:

Input Impedance	10 KOhms
Input Overload	2.3 V RMS

## Amplifier Output

Rated Output Power (8 ohm)	40W (20W x 2)
Two channels driven 20 Hz - 20 KHz @ 0.5% distortion	
Rated Distortion (1/2 Power)	0.20%
Speaker Impedance	6 - 8 ohms
Frequency Response (20 - 20kHz)	+/-0.5 dB
Damping Factor	50+
Signal-to-Noise Ratio at rated output	94 dB A - weighted

## Audio Processing

Audyssey Dynamic Volume™, Balance  
Bass Equalization • +/-12 dB range  
Treble Equalization • +/-12 dB range

## Operating Temperature

0° C - 40° C

## Physical Specifications

1.69" H x 7.36" W x 5.39" D  
(43mm x 187mm x 137mm)  
Weight • 1.40 lbs (0.635 kg)

## Shipping Specifications

9.45" D x 9.06" W x 2.60" H  
(240mm x 230mm x 66mm)  
Weight • 2.75 lbs (1.25 kg)

## Regulatory Approvals

Safety • cTUVus, CE-LVD  
EMC • FCC, IC, CE-EMC, C-Tick  
Environmental Compliance • RoHS



# Nuvo Player Portfolio

P200



## Input/Output Connectors

Line Input / Output	1 - TRS 3.5mm Stereo Jack
Setup Mic: (Audyssey)	1 - TRS 3.5mm Stereo Jack
Speaker Output	4 - Gold 5-Way Binding Post
USB 2.0 Connection (Type A)	1
Local Area Network (LAN)	1 - RJ45

## Supported Audio Formats

Music Files (USB or network) • MP3, WMA, AAC, FLAC, Ogg Vorbis, WAV  
Internet Radio • Pandora, Sirius/XM, Rhapsody, TuneIn, Deezer, iHeart Radio, Napster, Spotify

## Power Requirements

Input Voltage • 100 -240VAC, 50/60Hz  
Power Consumption • 150W (max), 31W (Typical - 1/8 Audio Power)

## IP Control

Apple iPhone®, iPod Touch® and iPad®, Android® Mobile, Android Tablet

## Network Connectivity

LAN (Wired Connection) • 10/100base-t Ethernet  
Wireless Connection • MIMO, 2 TX + 2 RX Channels, IEEE 802.11a/b/g/n

## Line Output

Output Level • 0-1000 mV RMS  
Output Impedance • 5 Ohms  
Signal-to-Noise Ratio at Rated Output • 88 dB A - Weighted

## Line Input

Input Impedance • 10 KOhms  
Input Overload • 2.3 V RMS

## Amplifier Output (Typical of 3 Zones)

Rated Output Power (8 Ohm) • 120W (60W x 2)  
Two Channels Driven 20 Hz - 20 KHz @ 0.5% Distortion  
Rated Output Power (4 Ohm) • 120W (60W x 2)  
Two Channels Driven 20 Hz - 20 KHz @ 0.5% Distortion  
Rated Distortion (1/2 Power) • 0.20%  
Speaker Impedance • 4 - 8 Ohms  
Frequency Response (20 - 20kHz) • +/- 0.5 dB  
Damping Factor • 65+  
Signal-to-Noise Ratio at Rated Output • 92 dB A - Weighted

## Audio Processing

Audyssey Dynamic Volume™, Balance  
Bass Equalization • +/- 12 dB Range  
Trebble Equalization • +/- 12 dB Range

## Operating Temperature

0° C - 40° C

## Dimensions, HWD

1.69"H x 9.72"W x 6.89"D  
(43mm x 247mm x 175mm)

## Miscellaneous

Weight • 2.65 lbs (1.20 kg)

## Regulatory Approvals

Safety • cTUVus, CE-LVD  
EMC • FCC, IC, CE-EMC, C-Tick  
Environmental Compliance • RoHS

## Nuvo Player Portfolio

P400



### Input/Output Connectors

Line Input • 3.5 mm combination analog/TOSLink

USB Connection • One

Local Area Network (LAN) • RJ45, Cat5 minimum,  
10/100baseT minimum

### Supported Audio Formats

Music Files (via USB or network) • MP3, WMA, AAC, Ogg

Vorbis, FLAC, WAV

Internet Radio • Pandora, Sirius/XM, Rhapsody, iHeart Radio,  
TuneIn, Deezer,  
Napster, Spotify

### Third Party Compatibility

URC, RTI, Crestron, Bit Wise, KNX

### Power Requirements

Input Voltage • 110 - 240VAC, 50/60 Hz

Power Consumption • (max) 80 W, (typical) 50 W

### IP Control

Apple iTouch®, Apple iPhone®, Apple iPad®, Android Mobile,  
Android Tablet

### Network Connectivity

LAN (Wired Connection) • Ethernet

Wireless Connection • 802.11 a,b,g,n 2.4 GHz or 5GHz band

### Output

Frequency Response • 50 Hz to 20 KHz

### Line Input

Input Impedance • 10 KOhms

Input Overload • 2.2 V RMS

### Regulatory Approvals

Safety • US:FCC CFR Title 47 Part 15, Subpart B;

CANADA:ICES-003; EUROPE:CISPR13; EUROPE: 55020;

AUSTRALIA/NEW ZEALAND: C-TICK standard AS/NZS CISPR13

Environmental Compliance • RoHS

### Audio Processing

Audyssey Dynamic Volume™, Balance

Bass Equalization • +/-12 dB range

Treble Equalization • +/-12 dB range

### Operating Temperature

0° C - 40° C

### Physical Specifications

Material • Metal/Plastic

Color • Black

Unit Size without feet • 217 H x 368 W x 149 D

Unit Size with feet • 217 H x 368 W x 149 D

Unit Weight • 4.69 kg

### Shipping Specifications

483 L x 228 W x 287 H

## Nuvo Player Portfolio

P500



### Input/Output Connectors

Line Input • RCA / TOSLINK

USB Connection • One

Local Area Network (LAN) • RJ45, Cat5 minimum,  
10/100baseT minimum

### Supported Audio Formats

Music Files (via USB or network) • MP3, WMA, AAC, Ogg

Vorbis, FLAC, WAV

Internet Radio • Pandora, Sirius/XM, Rhapsody, iHeart Radio,  
TuneIn, Deezer,  
Napster, Spotify

### Power Requirements

Input Voltage • 110 - 240VAC, 50/60 Hz

Power Consumption • (max) 80 W, (typical) 50 W

### IP Control

Apple iPod®, Apple iPhone®, Apple iPad®, Android Mobile,  
Android Tablet

### Network Connectivity

LAN (Wired Connection) • Ethernet

Wireless Connection • 802.11 a,b,g,n 2.4 GHz or 5GHz band

### Output

Distortion • 0.5% max

Frequency Response • 50 Hz to 20 KHz

### Line Input

Input Impedance • 10 KOHms

Input Overload • 2.2 V RMS

### Regulatory Approvals

Safety • US:FCC CFR Title 47 Part 15, Subpart B;

CANADA:ICES-003; EUROPE:CISPR13; EUROPE: 55020;

AUSTRALIA/NEW ZEALAND: C-TICK standard AS/NZS CISPR13

Environmental Compliance • RoHS

### Operating Temperature

0° C - 40° C

### Physical Specifications

Soundbar Size without feet (mm) 108 H x 877 W x 115 D

Subwoofer Size without feet (mm) 235 H x 231 W x 303 D

Soundbar Size with feet (mm) 115 H x 877 W x 115 D

Subwoofer Size with feet (mm) 261 H x 231 W x 303 D

Soundbar Weight (kg) 4.65

Subwoofer Weight (kg) 4.69

### Shipping Specifications

Unit Size (mm) 970 L x 315 W x 492.76 H

Unit Weight (kg) 12.7



# Nuvo Player Portfolio

P300



## Input/Output Connectors

Line Input	1 - TRS 3.5 mini TOSLINK Combo Receiver
Line Output	1 - TRS 3.5 mini TOSLINK Combo Receiver
USB 2.0 Connection (Type A)	1
Local Area Network (LAN)	1 - RJ45

## Supported Audio Formats

Music Files (via USB or network) • MP3, WMA, AAC, Ogg Vorbis, FLAC, WAV  
Internet Radio • Pandora, Sirius/XM, Rhapsody, TuneIn, Deezer, iHeart Radio, Napster, Spotify  
Playlist Support • WPL, M3U, PLS, iTunes

## Power Requirements

Input Voltage • 100 – 240VAC, 50/60 Hz  
Power Consumption • (max) 10 W, (typical) 5.1 W

## IP Control

Apple iTouch®, Apple iPhone® and Apple iPad®, Android Mobile, Android Tablet

## Network Connectivity

LAN (Wired Connection) • 10/100base-t Ethernet  
Wireless Connection • MIMO, 2 TX + 2 RX Channels  
IEEE 802.11a/b/g/n

## Line Output - Digital

Sample Rates	44.1 KHz-192KHz
Bit Rate	24B
Signal-to-Noise Ratio at rated output	>120 dB SNR
THD+n	<0.0005%
Frequency Response	+/-0.1 dB 20 Hz to 20 KHz

## Line Input Digital

Sample Rates	44.1 KHz-192KHz
Bit Rate	24B
Signal-to-Noise Ratio at rated output	>120 dB SNR
THD+n	<0.0005%
Frequency Response	+/-0.1 dB 20 Hz to 20 KHz

## Line Output - Analog

Output Level	0-2.0 V RMS
Output Impedance	5 Ohms
Signal-to-Noise Ratio, rated output	>100 dB SNR
THD+n	<0.005%
Frequency Response	+/- 0.5 dB 20 Hz to 20 KHz

## Line Input - Analog

Input Impedance	10 KOhms
Input Overload	2.0 V RMS
Signal-to-Noise Ratio, rated output	>100 dB SNR
THD+n	<0.005%
Frequency Response	+/- 0.5 dB 20 Hz to 20 KHz

## Audio Processing

Audyssey Dynamic Volume™, Balance  
Bass Equalization • +/-12 dB range  
Treble Equalization • +/-12 dB range

## Operating Temperature

0° C - 40° C

## Physical Specifications

1.5" H x 5.73" W x 3.56" D  
(38mm x 145.5mm x 90.5mm)  
Weight • 0.5 lbs (0.2 kg)

## Shipping Specifications

9.45" D x 9.06" W x 2.58" H  
(240mm x 230mm x 65.5mm)  
Weight • 2.87 lbs (1.30 kg)

## Regulatory Approvals

Safety • cTUVus, CE-LVD  
EMC • FCC, IC, CE-EMC, C-Tick  
Environmental Compliance • RoHS

# SERIE TWO



VA-NV-2IC6



VA-NV-2IC6-ANG



VA-NV-2IC6-DVC



VA-NV-2IC8



VA-NV-2IC8-ANG



VA-NV-2IW6



VA-NV-2IW5-LCR

**Frequency**  
**Speaker Impedance**  
**Regulatory Approvals - Environmental**

Sensitivity  
Power RMS  
Power Peak  
Woofer Material  
Tweeter Material  
Unit Weight (kg)  
Unit Weight (lbs)  
Woofer Size (in)  
Woofer Size (mm)  
Tweeter Size (in)  
Tweeter Size (mm)  
Overall Size (in)  
Overall Size (mm)  
Mounting Cutout (in)  
Mounting Cutout (mm)  
Overall Speaker Depth (in)  
Overall Speaker Depth (mm)  
Shipping

60Hz - 20KHz  
8 Ohms  
CE, RoHS,  
REACH,  
Compliant,  
#ABS and  
#4 PELD  
Recyclable

60Hz - 20KHz  
8 Ohms  
CE, RoHS,  
REACH,  
Compliant,  
#ABS and  
#4 PELD  
Recyclable

55Hz - 20KHz  
8 Ohms  
CE, RoHS,  
REACH,  
Compliant,  
#ABS and  
#4 PELD  
Recyclable

45Hz - 20KHz  
8 Ohms  
CE, RoHS,  
REACH,  
Compliant,  
#ABS and  
#4 PELD  
Recyclable

45Hz - 20KHz  
8 Ohms  
CE, RoHS,  
REACH,  
Compliant,  
#ABS and  
#4 PELD  
Recyclable

60Hz - 20KHz  
8 Ohms  
CE, RoHS,  
REACH,  
Compliant,  
#ABS and  
#4 PELD  
Recyclable

60Hz - 20KHz  
8 Ohms  
CE, RoHS,  
REACH,  
Compliant,  
#ABS and  
#4 PELD  
Recyclable

86dB  
50w  
100w  
Poly  
Silk  
3.28  
7.24  
6.5"  
165mm  
0.5"  
13mm  
9.06"  
230mm  
8.07"  
205mm  
3.90"  
99mm  
Pair

86dB  
50w  
100w  
Poly  
Silk  
1.80  
3.96  
6.5"  
165mm  
0.5"  
13mm  
9.06"  
230mm  
8.07"  
205mm  
4.57"  
116mm  
Single

86dB  
50w  
100w  
Poly  
Silk  
1.97  
4.35  
6.5"  
165mm  
0.5"  
13mm  
9.06"  
230mm  
8.07"  
205mm  
3.90"  
99mm  
Single

86dB  
50w  
100w  
Poly  
Silk  
1.97  
4.35  
8"  
203mm  
0.5"  
13mm  
10.63"  
270mm  
9.68"  
246mm  
4.37"  
111mm  
Pair

86dB  
50w  
100w  
Poly  
Silk  
2.58  
5.69  
8"  
203mm  
0.5"  
13mm  
11.22"  
285mm  
10.15"  
258mm  
5.31"  
135mm  
Single

86dB  
50w  
100w  
Poly  
Silk  
3.60  
7.94  
6.5"  
165mm  
0.5"  
13mm  
8.66" x 11.81"  
220mm x 300mm  
7.6" x 10.79"  
194mm x 274mm  
3.27"  
83mm  
Pair

86dB  
50w  
100w  
Poly  
Silk  
1.98  
4.38  
5.25"  
133.35mm  
0.5"  
13mm  
15.35" x 7.48"  
390mm x 190mm  
6.41" x 14.3"  
163mm x 363mm  
3.35"  
85mm  
Single

# SERIES FOUR



	VA-NV-4IC6	VA-NV-4IC6-ANG	VA-NV-4IC6-DVC	VA-NV-4IC8	VA-NV-4IC8-ANG	VA-NV-4IW6	VA-NV-4IW5-LCR
<b>Frequency</b>	55Hz - 20KHz	55Hz - 20KHz	50Hz - 20KHz	40Hz - 20KHz	40Hz - 20KHz	55Hz - 20KHz	60Hz - 20KHz
<b>Speaker Impedance</b>	8 Ohms	8 Ohms	8 Ohms	8 Ohms	8 Ohms	8 Ohms	8 Ohms
<b>Regulatory Approvals - Environmental</b>	CE, RoHS, REACH, Compliant, #ABS and #4 PELD Recyclable	CE, RoHS, REACH, Compliant, #ABS and #4 PELD Recyclable	CE, RoHS, REACH, Compliant, #ABS and #4 PELD Recyclable	CE, RoHS, REACH, Compliant, #ABS and #4 PELD Recyclable	CE, RoHS, REACH, Compliant, #ABS and #4 PELD Recyclable	CE, RoHS, REACH, Compliant, #ABS and #4 PELD Recyclable	CE, RoHS, REACH, Compliant, #ABS and #4 PELD Recyclable
<b>Sensitivity</b>	88dB	88dB	88dB	88dB	88dB	88dB	88dB
<b>Power RMS</b>	75w	75w	75w	75w	75w	75w	75w
<b>Power Peak</b>	150w	150w	150w	150w	150w	150w	150w
<b>Woofer Material</b>	Glass Fiber	Glass Fiber	Glass Fiber	Glass Fiber	Glass Fiber	Glass Fiber	Glass Fiber
<b>Tweeter Material</b>	Aluminum	Aluminum	Aluminum	Aluminum	Aluminum	Aluminum	Aluminum
<b>Unit Weight (kg)</b>	3.72	2.01	2.26	4.35	2.58	3.95	2.16
<b>Unit Weight (lbs)</b>	8.20	4.44	4.98	9.58	5.69	8.71	4.77
<b>Woofer Size (in)</b>	0.75"	0.75"	0.75"	0.75"	0.75"	0.75"	0.75"
<b>Woofer Size (mm)</b>	19mm	19mm	19mm	19mm	19mm	19mm	19mm
<b>Tweeter Size (in)</b>	9.06"	9.06"	9.06"	10.63"	11.22"	8.66" x 11.81"	15.35" x 7.48"
<b>Tweeter Size (mm)</b>	13mm	13mm	13mm	13mm	13mm	13mm	13mm
<b>Overall Size (in)</b>	9.06"	9.06"	9.06"	10.63"	11.22"	8.66" x 11.81"	15.35" x 7.48"
<b>Overall Size (mm)</b>	230mm	230mm	230mm	270mm	285mm	220mm x 300mm	45mm x 256mm
<b>Mounting Cutout (in)</b>	8.07"	8.07"	8.07"	9.68"	10.15"	7.6" x 10.79"	6.41" x 14.3"
<b>Mounting Cutout (mm)</b>	205mm	205mm	205mm	246mm	258mm	194mm x 274mm	163mm x 363mm
<b>Overall Speaker Depth (in)</b>	3.94"	4.76"	3.94"	4.41"	5.55"	3.27"	3.35"
<b>Overall Speaker Depth (mm)</b>	100mm	121mm	100mm	112mm	141mm	83mm	85mm
<b>Shipping</b>	Pair	Single	Single	Pair	Single	Pair	Single

# SERIES SIX



	VA-NV-6IC6	VA-NV-6IC6-ANG	VA-NV-6IC8	VA-NV-6IC8-ANG	VA-NV-6IW6	VA-NV-6IW6-LCR
<b>Frequency</b>	60Hz - 20KHz	60Hz - 20KHz	35Hz - 20KHz	35Hz - 20KHz	50Hz - 20KHz	45Hz - 20KHz
<b>Speaker Impedance</b>	8 Ohms	8 Ohms	8 Ohms	8 Ohms	8 Ohms	8 Ohms
<b>Regulatory Approvals - Environmental</b>	CE, RoHS, REACH, Compliant, #ABS and #4 PELD Recyclable	CE, RoHS, REACH, Compliant, #ABS and #4 PELD Recyclable	CE, RoHS, REACH, Compliant, #ABS and #4 PELD Recyclable	CE, RoHS, REACH, Compliant, #ABS and #4 PELD Recyclable	CE, RoHS, REACH, Compliant, #ABS and #4 PELD Recyclable	CE, RoHS, REACH, Compliant, #ABS and #4 PELD Recyclable
<b>Sensitivity</b>	89dB	89dB	89dB	89dB	89dB	89dB
<b>Power RMS</b>	100w	100w	100w	100w	100w	100w
<b>Power Peak</b>	200w	200w	200w	200w	200w	200w
<b>Woofer Material</b>	Kevlar®/Carbon Fiber Weave	Kevlar®/Carbon Fiber Weave	Kevlar®/Carbon Fiber Weave	Kevlar®/Carbon Fiber Weave	Kevlar®/Carbon Fiber Weave	Kevlar®/Carbon Fiber Weave
<b>Tweeter Material</b>	Titanium	Titanium	Titanium	Titanium	Titanium	Titanium
<b>Unit Weight (kg)</b>	3.79	2.01	4.35	2.58	3.95	2.47
<b>Unit Weight (lbs)</b>	8.35	4.44	9.58	5.69	8.71	5.4
<b>Woofer Size (in)</b>	6.5"	6.5"	8"	8"	6.5"	6.5"
<b>Woofer Size (mm)</b>	165mm	165mm	203mm	203mm	165mm	165mm
<b>Tweeter Size (in)</b>	1"	1"	1"	1"	1"	1"
<b>Tweeter Size (mm)</b>	25mm	25mm	25mm	25mm	25mm	25mm
<b>Overall Size (in)</b>	9.06"	9.06"	10.63"	11.22"	8.66" x 11.81"	19.8" x 11.26"
<b>Overall Size (mm)</b>	230mm	230mm	270mm	285mm	220mm x 300mm	505mm x 286mm
<b>Mounting Cutout (in)</b>	8.07"	8.07"	9.68"	10.15"	7.6" x 10.79"	7.6" x 16.65"
<b>Mounting Cutout (mm)</b>	205mm	205mm	246mm	258mm	194mm x 274mm	193mm x 423mm
<b>Overall Speaker Depth (in)</b>	3.94"	4.76"	4.41"	5.55"	3.27"	3.5"
<b>Overall Speaker Depth (mm)</b>	100mm	121mm	112mm	141mm	83mm	90mm
<b>Shipping</b>	Pair	Single	Pair	Single	Pair	Single

# SERIE TWO&SIX

## OUTDOOR SPEAKERS

Enhance your exterior living spaces with the powerful audio of Nuvo. The Series Two and Series Six Outdoor speakers are designed with high quality components that deliver clean immersive sound to outdoor areas. Offering a sleek enclosure with modern form and minimal size, Nuvo Outdoor Speakers tastefully blend with the style of any home.

- 8 ohm rated
- Aluminium powder coated grill
- Aluminium speaker bracket
- Lifetime warranty
- IP65 rated for outdoor use and MILSTD-810 for UV, salt spray and temperature extremes
- Available in white and black

Series two 5.25" & 6.5"  
Outdoor Speaker

VA-NV-20D5-BK  
VA-NV-20D6-WH  
VA-NV-20D6-BK  
VA-NV-20D6-WH



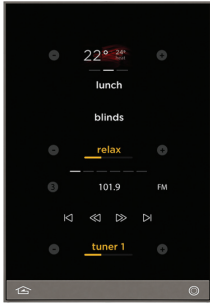
Series six 5.25" & 6.25"  
Outdoor Speaker

VA-NV-60D5-BK  
VA-NV-60D5-WH  
VA-NV-60D6-BK  
VA-NV-60D6-WH



## Equinox 40 Digital Keypad

EQ40TB-TI-II



### Display

4.3" Diagonal  
Active Matrix Color LCD

### Features

Up to 3 Swipable Pages  
Single Layer Mini-Widget UI

### Controls

Hard Buttons • 2 (1 Home, 1 Programmable)

**Header** Mini-Widget (Climate, Clock,  
Weather, None)

Scenes Mini-Widget  
Audio Mini-Widget

### Sensors

Proximity  
Light (for Screen Brightness)

### Connections

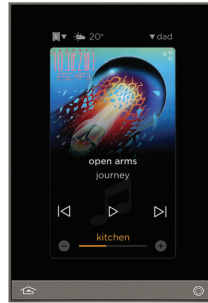
Station Bus • 1  
Auxiliary • 1

### Wall Dimensions

3.54"W x 4.72"H  
90mm W x 120mm H  
0.45"/ 11mm Off-Wall

## Equinox 41 Digital Keypad

EQ41TB-TI



### Display

4.3" Diagonal  
Active Matrix Color LCD

### Features

Single Widget UI & idem app phone

### Controls

Hard Buttons • 2 (1 Home, 1 Programmable)

Full Widgets:

Audio, Climate, Scenes, Lighting, Weather,  
Video, Cameras, Security, Theater,  
Pool/Spa, Shades, Timers

### Sensors

Proximity  
Light (for Screen Brightness)

### Connections

RJ45 (PoE) • 1

### Wall Dimensions

3.54"W x 4.72"H  
90mm W x 120mm H  
0.45"/ 11mm Off-Wall



## Equinox 73 Touchscreen

EQ73TB-TI-II



audio full screen shown above

### Display

7.1" Diagonal  
Active Matrix Color LCD

### Features

Triple Widget UI  
Live Dashboard  
Three Layer  
Profiles for Users, Spaces, Functions and Time  
Personalizable UI for Each User

### Controls

Hard Buttons • 2 (1 Home, 1 Programmable)  
Full Widgets:  
Audio, Climate, Scenes, Lighting, Weather,  
Video, Cameras, Security, Theater,  
Pool/Spa, Shades, Timers

### Sensors

Light (for Screen Brightness)

### Connections

RJ45 (PoE) • 1

### Wall Dimensions

8.54"W x 4.72"H  
217mm W x 120mm H  
0.45"/ 11mm Off-Wall

## Equinox App - Tablet

EQ-APP-5, EQ-APP-10, EQ-APP-X



dashboard shown above

### Compatibility

Apple, Android

### Features

Triple Widget UI  
Live Dashboard  
Three Layer  
Profiles for Users, Spaces, Functions and Time  
Personalizable UI for Each User

### Controls

Full Widgets:  
Audio, Climate, Scenes, Lighting, Weather,  
Video, Cameras, Security, Theater,  
Pool/Spa, Shades, Timers

### Licensing

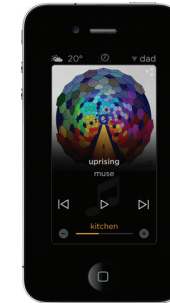
**Device License:** A device license allows a single device to be connected to a Vantage system

**Multi-License:** A multi-license enables any number of supported devices to function as an interface when they are connected to a single InFusion system



## Equinox App - Phone

EQ-APP-5, EQ-APP-10, EQ-APP-X



audio widget shown above

### Compatibility

Apple, Android

### Features

Single Widget UI  
Live Dashboard  
Three Layer  
Profiles for Users, Spaces, Functions and Time  
Personalizable UI for Each User

### Controls

Full Widgets:  
Audio, Climate, Scenes, Lighting, Weather,  
Video, Cameras, Security, Theater,  
Pool/Spa, Shades, Timers

### Licensing

**Device License:** A device license allows a single device to be connected to a Vantage system

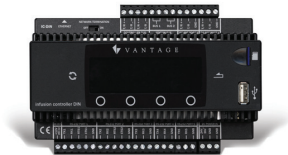
**Multi-License:** A multi-license enables any number of supported devices to function as an interface when they are connected to a single InFusion system



# related products

In addition to the main products featured on page three, a complete Vantage multi-room audio solution could also contain one or more of the products listed below.

InFusion DIN Controller  
IC-DIN-II



Integration Controller  
IRXII



Alexa Integration  
ALEXA-GW





Legrand Integrated Solutions nv/sa  
Binnendijk 40, 9130 Beveren  
Belgium  
T : +32 (0)3 773 31 06  
[www.legrandintegratedsolutions.com](http://www.legrandintegratedsolutions.com)



1061 South 800 East  
Orem, Utah 84097  
800.555.9891  
801.229.2800  
801.224.0355 fax

[www.vantagecontrols.com](http://www.vantagecontrols.com)

©2018 by Vantage. All Rights Reserved.  
M-B-AUDIO