

TRAINING

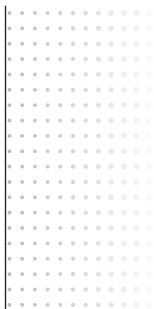


FOR **ELECTRICAL, ARCHITECTURAL & DESIGN**
PROFESSIONALS

2014
2015

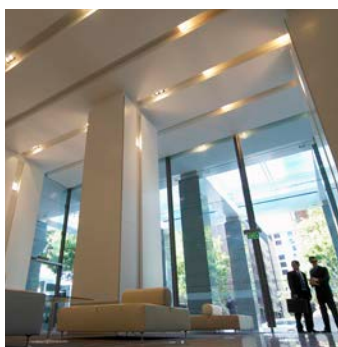
 **legrand**[®]

Develop and anticipate market demands



MASTER THE SOLUTIONS FOR ENERGY EFFICIENT LIGHTING

With an every increasing mindset towards sustainability and a green consciousness, Legrand offers a range of switch sensors that help both existing and new buildings achieve new levels of lighting energy efficiency.



SUCCESSFULLY DO A HOME AUTOMATION INSTALLATION

The way of life continually evolves and our homes adapt accordingly to bring more comfort, security, communication and autonomy to the inhabitant. Legrand reinforces your expertise to gain access to new markets.

TRAINING FOR THE LEGRAND GROUP



DEVELOP AN OFFER FOR DIGITAL NETWORKS AND INFRASTRUCTURES

Building issues have changed. The needs of users are evolving towards more interactive applications. To remain permanently connected, users need high-performance equipment, which necessitates, for both commercial and residential buildings, an interior digital infrastructure. Legrand responds to these needs with a product offer that is always more innovative and accessible to all.

A comprehensive training offer



FROM TOP TO BOTTOM,

LEGRAND SA SHOWROOM OVERVIEW

**OFFICE SOLUTIONS (L),
HEALTHCARE SOLUTIONS (R)**

TRAINING FACILITY

PRECISE TRAINING

Our training takes place in a professional environment as close as possible to the reality of your building sites or projects.

AT LEGRAND SA TRAINING FACILITY:

- Training involves groups of 6 to 15 people.
- Make progress with expert trainers and adapted teaching aids.
- Follow training that enables individual learning and professional exchange.

TAILOR MADE TRAINING

Legrand accompanies you in your most complex projects. In collaboration with our trainers, you'll be able to:

- Integrate your project objectives and specifics.
- Benefit from an accumulated expertise adapted to your professional requirements.
- Have at your disposal a larger scope for subsequent building projects.

To find out more about tailor made training modules, please call our training centre on: 011 444 7971

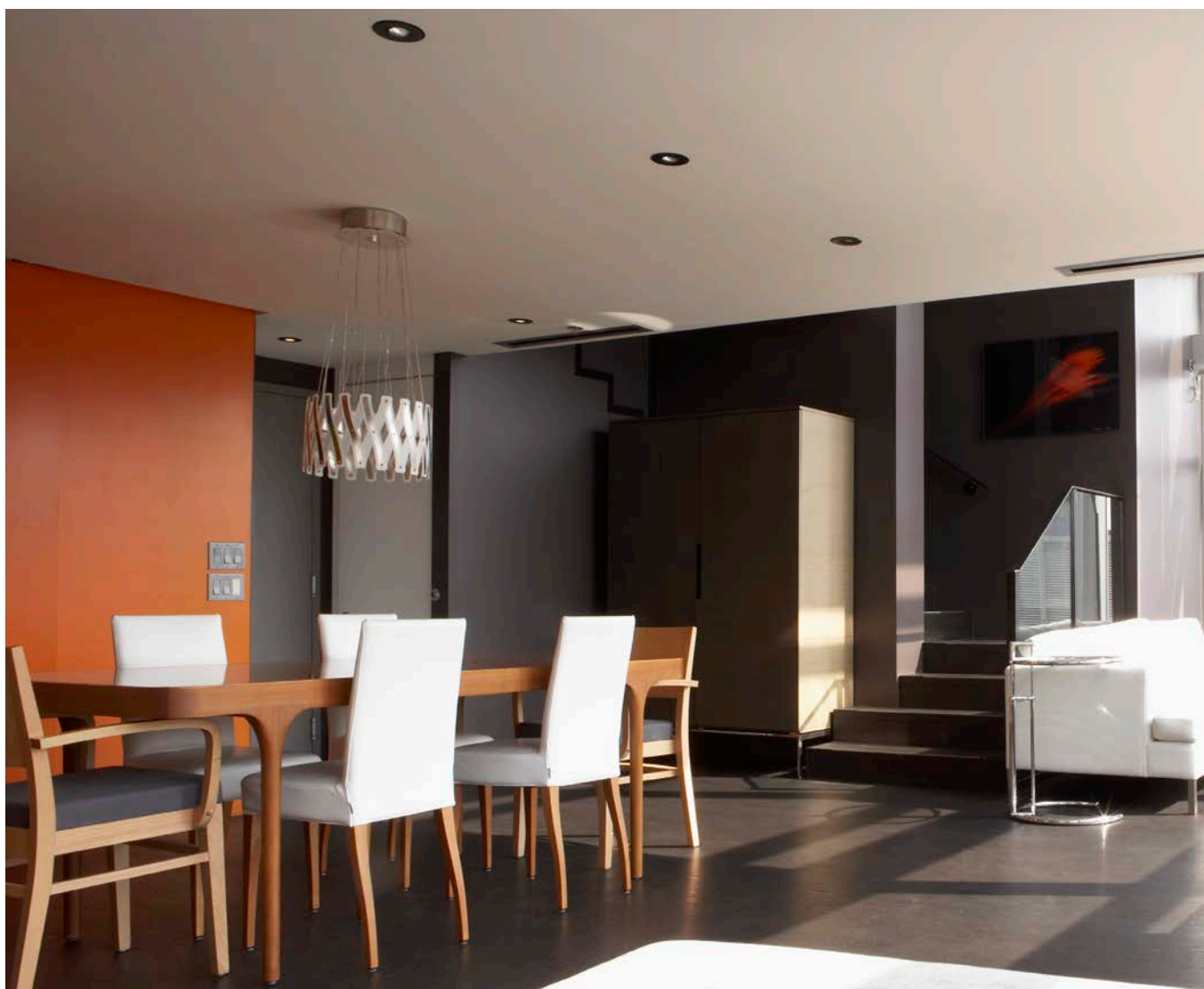
RESIDENTIAL

GUIDE TO CHOICE OF TRAINING COURSES

Choose your subject...

COURSE REF.	HOME AUTOMATION	ALLOCATION		DURATION	Page
		THEORY	PRACTICAL EXERCISES		
MH1	Discover the Arteor range of switches and sockets + simple home automation	80%	20%	1 day	03
MH2	Install and configure an advanced home automation project	60%	40%	1 day	04

	DOOR ENTRY SYSTEMS	ALLOCATION		DURATION	Page
		THEORY	PRACTICAL EXERCISES		
DES	Install and cofigure door entry systems	80%	20%	1 day	05



COURSE REF : MH1

Value: R1950 excl. VAT - 1 day (7 h)

80% Theory - 20% Practical Exercises

Advantages

- A comprehensive overview of the offer
- "Touch & Feel Experience" - Handling of functional products.

Go further...

- Course MH2 (advanced home automation solutions) p. 4
- Course DES (door entry systems installation and configuration) p.5

Discover Arteor and the automation solutions of My Home**TRAINING OBJECTIVES :**

Be able to make a complete offer for an easy home automation project.

Install and configure the products, perform troubleshooting and organise system maintenance.

**MY HOME****legrand****LEARN ABOUT...**

- The home automation marketing approach and project approach
- Comfort, lighting control, automation and sound diffusion
- Security: burglar alarm
- Energy saving: temperature regulation and energy management
- Communication: how to integrate My Home with the 2-wire intercom system
- Integration: basics of how to combine the different functions to create integrated simple scenarios

PRACTICE...

- Exercises on paper and on the computer
- Practice on training panels

TOOLS & DOCUMENTS

- Didactic panels for automation with temperature control, alarm and sound distribution system
- PPT presentations
- Software
- Summarizing CD
- Catalogues and technical guides provided to each trainee

COURSE REF: MH2

Value: R3380 excl. VAT - 1 day (7h)

60 % Theory - 40 % Practical Exercises

Advantages

Practical workshops for the individual or two-man teams

Pre-requisites

Completion of Course MH1

Go further...

- Course DES (door entry systems installation and configuration) p. 5

Suggest and install large scale home automation projects with My Home

TRAINING OBJECTIVES :

How to manage and quote a large project.

How to choose the right products to expand the basic system limits.

Configure a dedicated software to control the system locally or remotely.



MY HOME
legrand

LEARN ABOUT...

- How to expand the SCS system in terms of distance and addresses to produce large installations
- Sound distribution physical extension and multi-channels source
- How to control the system via PC
- How to make scheduled and conditioned special programmes to create integrated advanced scenarios
- introduction to Open-Web-Net Community
- Essential software programming including:
 - . All touch screens
 - . Multi-media interface
 - . Web server
 - . Scenario scheduler

PRACTICE...

- For every part of the theoretical section, the trainees will do practical exercises on the training panel
- Virtual configuration
- Use of the documentation and quotation software to make a complete commercial offer.

TOOLS & DOCUMENTS

- Didactic panels for: Automation with temperature control, alarm and sound distribution system
- PPT presentations
- Software
- Summarizing CD
- Catalogues and technical guides provided to each trainee

COURSE REF: DES

Value: R1950 excl. VAT - 1 day (7h)

80 % Theory - 20 % Practical Exercises

Advantages

Practical workshops for the individual or two-man teams

Pre-requisites

Basic knowledge of low voltage systems

Install and configure Door Entry Systems

TRAINING OBJECTIVES :

Install and configure the products.

Choose the right products to meet a set of specifications.

**LEARN ABOUT...**

- D45 Door Entry System: System composition, wiring and distances, system expansion and advantages
- System Features: System selection, entry panels, selection of internal units, porter station (switchboard) and system accessories (power supplies, mixer, riser and floor shunt)
- Project Documentation (software)
- Special Connections: Alarm sensor connection, SOS button for distress signal and power supply connection
- System Architecture: How to create the riser, creation of multiple risers, how to connect apartments, switchboard, designing for multiple switchboards, entry panel management, IP interface for extended distance over LAN
- System Limits: Maximum distance and maximum devices, distance between devices
- Entry Panel Selection: Features of the system, how to compose the entry panels, entry panel selection
- Composition in the Apartment: Internal unit selection and functions, accessories for internal units
- 2-Wire Switchboard: Communication management, configuring the switchboard
- 2-Wire - IP Offer: Integration between 2 wire and IP, IP backbone & 2-wire backbone, system design and configuration of an IP system, choice of the best technology
- IP Switchboard: Switchboard software, PC based solution, configuring a switchboard software

PRACTICE...

- Hands on practice on design and wiring principles
- System integration, 2-wire switchboard
- Integration with IP switchboard

COMMERCIAL / INDUSTRY

GUIDE TO CHOICE OF TRAINING COURSES

Choose your subject...

COURSE REF.	POWER & PROTECTION	ALLOCATION		DURATION	Page
		THEORY	PRACTICAL EXERCISES		
PWR1	Circuit Breakers	80%	20%	½ day	07
PWR2	XL3, DMX ³ , DPX and Lexic Ranges	80%	20%	½ day	08
PWR3	Zucchini Busbar and Transformers	80%	20%	½ day	09
PWR3	UPS	80%	20%	½ day	10
CABLE MANAGEMENT		THEORY	PRACTICAL EXERCISES	DURATION	Page
CBL1	DLP Trunking, Soluflex, Power Poles, Desktop Modules, Pop-Up Boxes	80%	20%	½ day	11
VDI		THEORY	PRACTICAL EXERCISES	DURATION	Page
VDI1	Legrand Cabling System - LCS ²	80%	20%	1 day	12
LIGHTING ENERGY MANAGEMENT		THEORY	PRACTICAL EXERCISES	DURATION	Page
LGT1	Occupancy Sensors	80%	20%	½ day	13



COURSE REF: PWR1

Value: R1690 excl. VAT

½ day (3.5h)

80 % Theory

20 % Practical Exercises

Those Concerned

- Installers
- Operators, Assistant Operators

Go further...

- Course PWR2 (XL3) p. 8
- Course PWR3 (Zucchini Transformers and Busbar - knowledge and advantages) p. 9

How to integrate protection devices, their accessories and additional industrial functions

TRAINING OBJECTIVES :

Master the technical capabilities of circuit breakers by the integration of its electrical and mechanical accessories.

Define the circuit breaker with or without software assistance, assemble accessories quickly and integrate the device into an enclosure.

LEARN ABOUT...**Circuit Breaker Basics**

- Technologies used
- Characteristics
- Product Standards
- Tripping Curves

Air Circuit Breaker

- Range
- Characteristics
- Accessories

Moulded Case Circuit Breaker

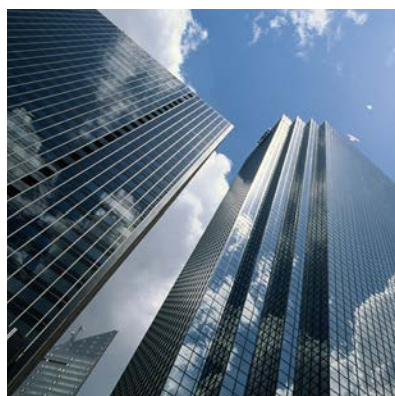
- Range
- Characteristics
- Accessories

Modular Components

- Range
- Characteristics
- Accessories

Software Demonstration

- XLPRO²
- XLPRO² Calculation



COURSE REF: PWR2

Value: R1690 excl. VAT

½ day (3.5h)

80 % Theory

20 % Practical Exercises

Those Concerned

- Panel Builders
- Consultants
- Technical support staff, after sales managers

Go further...

- Course PWR3 (Zucchini Transformers and Busbar - knowledge and advantages) p. 9

XL3 Enclosures incorporating distribution panel design and XLPRO² software

TRAINING OBJECTIVES :

Understand the basic and advanced functions of the XLPRO² software.

Be able to design and propose distribution panels with the XL3 system.

Ability to create short circuit calculation studies in electrical systems

LEARN ABOUT...**Legrand Offer Overview**

- DMX³ Air Circuit Breaker
- DPX and DRX Moulded Case Circuit Breakers
- Lexic Modular Components
- Electrical and Mechanical features and accessories

XLPRO²**Panel Design Software**

- Basic functions
- Advanced functions
- Case study with practical exercise

XLPRO² Calculation**Short Circuit Circulation Software**

- Basic functions
- Advanced functions
- Selectivity
- Case study with practical exercise

Minimum PC Requirements:

- Intel Pentium IV Processor or equivalent running Windows XP, Vista or 7
- 512 MB RAM
- CD-ROM Drive



COURSE REF: PWR3

Value: R1690 excl. VAT

½ day (3.5h)

80 % Theory

20 % Practical Exercises

Those Concerned

- Panel Builders
- Consultants

Zucchini Busbar and Cast Resin Transformers

TRAINING OBJECTIVES :

Acquire detailed knowledge of the product range
Understand the advantages of Zucchini Transformers
Be able to choose the right product to meet a set of specifications

LEARN ABOUT...**EDM Cast Resin Transformers**

- Range
- Construction features
- Benefits
- Production
- Tests

Advantages of Cast Resin Transformers

Analysis of typical technical specifications

Documents / tools

PPT Presentations

Excel module for the evaluation of total life cost of a transformer



COURSE REF: PWR4

Value: R1690 excl. VAT

½ day (3.5h)

80 % Theory

20 % Practical Exercises

Those Concerned

- Data Installers
- Electricians
- Consultants

UPS

TRAINING OBJECTIVES :

Understand the advantages and benefits of using the Legrand UPS range

LEARN ABOUT...

The differential factors and all advantages of the Legrand UPS range

Technical characteristics

Modular advantages

Accessories

PPT Presentations



COURSE REF: CBL1

Value: R1690 excl. VAT

½ day (3.5h)

80 % Theory

20 % Practical Exercises

Those Concerned

- Contractors
- Consultants
- Distributors

Complete Cable Management Solution incl. DLP Direct Clipping Trunking, Soluflex, Pop-Up Boxes, Power Poles & Desktop Modules

TRAINING OBJECTIVES :

Acquire a good level of familiarity with the Legrand offer through practical product handling.

Know the solutions available and the products they involve. Understand the needs of your respective market.

Choose the right product ranges for your market so as to boost sales

Detailed insight of Legrand's concept of power distribution in the workspace environment.

LEARN ABOUT...**Market Trends**

- Office furniture layouts
- Type of construction
- Type of design

Underfloor Distribution Systems

- Raised access floor: System components, General installation principle, features and benefits
- Flush floor: System components, General installation principle, features and benefits
- Screed floor: System components, General installation principle, features and benefits

Soluflex

- Basic elements
- Advantages over traditional raised floor

DLP Trunking Range

- Skirting
- DLPe
- DLP Aluminium
- Related accessories
- Unique selling points

Ceiling Columns**Mini Columns****Desktop**

COURSE REF: VDI1

Value: R1690 excl. VAT

1 day (7h)

80 % Theory

20 % Practical Exercises

Those Concerned

- Installers
- Professionals

Legrand Cabling System - LCS²**TRAINING OBJECTIVES :**

Understand the advantages and benefits of using LCS².

Understanding of the LCS² solution from the Technical Room to the workstation.

The ability to design and use Legrand LCS² software.

LEARN ABOUT...**LCS² Copper**

- Legrand system guarantee and performance
- The offer up to 10Gbits/s

LCS² Enclosures

- Installation, maintenance and cable management solutions

LCS² Workstations

- Zone boxes
- Desk and wall solutions
- Wi-Fi network solutions

LCS² Services

- Automatic determination of BOQ
- Management studies - technical purchases, orders, etc
- 2D drawing display of designs within network

LINKEO Cabinets

- Installation, maintenance and cable management solutions



COURSE REF: LGT1

Value: R1690 excl. VAT

½ day (3.5h)

80 % Theory

20 % Practical Exercises

Those Concerned

- Consultants
- System Integrators
- Contractors

Pre-Requirements

- Basic knowledge of Occupancy Sensors

Occupancy Sensors**TRAINING OBJECTIVES :**

Acquire detailed knowledge on Occupancy Sensors & different technologies.

Be able to choose the right products for an efficient design and to meet the specifications.

LEARN ABOUT...**Occupancy Sensors**

- Different technologies
- Applications
- Guidelines of installation and placement
- Selection strategy

Daylighting

- Controls and strategies of selection

Typical Wiring Practices for Multisensor, Multicircuit Connections**Strategies for Success**

- Lighting control strategies to be considered for an efficient design

Lighting Control Terminology

- Various terminologies used in the industry

Occupancy Sensor - Application & Design

- Selecting, laying out, specifying, installing and commissioning occupancy sensors and occupancy based lighting system
- Application examples for specific building spaces



VERTICAL SOLUTIONS

COURSE REF	HEALTHCARE	ALLOCATION		DURATION	Page
		THEORY	PRACTICAL EXERCISES		
HC1	Discover the complete Healthcare Solution including: Bed Head Trunking & Nurse Call Units	80%	20%	½ day	15



COURSE REF : HC1

Value: R1690 excl. VAT - ½ day (3.5 h)

80% Theory - 20 % Practical Exercises

Those Concerned

- Consultants
- System Integrators
- Contractors

Pre-Requirements

- Basic knowledge of BUS system

Discover the complete Healthcare Solution**TRAINING OBJECTIVES :**

Acquire detailed knowledge on the Legrand Healthcare range of products.

Choose the right products for an efficient design and to meet the specifications.

Learn how to integrate all Legrand Healthcare Solutions together.

**LEARN ABOUT...****Overview of the Healthcare concept of Legrand****Nurse Call System**

- Using rules
- New innovative system: magnetic connection and DECT reporting
- Supervision and recording of calls
- System architecture
- Case study with practical exercise and system configuration

Assisted Living

- New innovative concept: lighting scenarios
- Supervision and recording of patient behaviours (traceability)
- System architecture
- Case study with practical exercise and system configuration

Bed Head Unit

- Different needs: medical and non-medical bedroom
- Lighting load and functionality: Fluorescent & LED, ambience & patient
- Nurse call and assisted living functions
- Plugs and control devices management
- Separated gas and electrical networks
- Case study with practical exercise

Antibacterial Treatment

training
BOOKINGS

+27 11 444 7971

Mon - Fri 8h00 - 17h00

21 Spartan Crescent

Eastgate Ext3 - Sandton

2054

Johannesburg



LEGRAND SOUTH AFRICA

21 Spartan Crescent

Eastgate Ext3 - Sandton

2054

Johannesburg

South Africa

www.legrand.co.za