

# Keep an eye on your house with a Connected Doorbell



**Is somebody ringing  
your doorbell?**

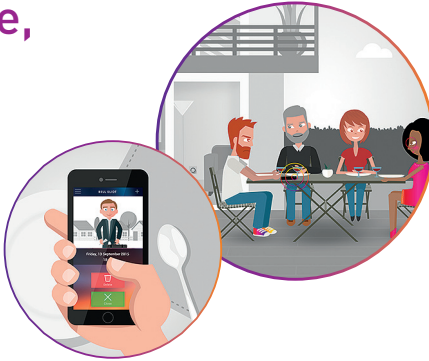
You immediately receive  
a photograph via a push  
notification or via email.

# A visitor arrives and rings

I immediately receive their photograph  
on my smartphone

## If I am home,

I can see who is calling  
without moving.



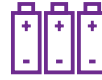
## If I'm not home,

I can see that it is someone  
trying to make a delivery.



I can call a neighbour  
to ask them to take the  
delivery for me.

# Features



Runs on three AA batteries.  
Battery life of 1500 calls  
minimum.



Wide angle camera with  
LEDs for taking photographs,  
even when it is dark.



The photographs taken  
by the doorbell are time  
stamped (date and time)  
and stored for 30 days.



Photographs of visitors  
can be sent by push  
and/or email.



The doorbell is weather-  
proof and can be fitted  
indoors or out.



Wide choice of chimes  
available via the app.  
You can also download  
your own chimes.



You can receive notifications on  
several different mobile devices.



# Easy installation



The connected doorbell does not require any wired connection: installation is extremely **quick** and **simple**! All that is required is a direct connection to the Wi-Fi box and then you download the application.



App available free on:



Pushbutton with white finish Cat. No. 0 942 30 or black Cat. No. 0 942 31.



Complete kit Cat. No. 0 942 32 comprising one white pushbutton + 1 door chime

 **legrand**<sup>®</sup>

**Head office**

and International Department  
87045 Limoges Cedex - France  
Tel.: + 33 (0) 5 55 06 87 87  
Fax: + 33 (0) 5 55 06 74 55

